

Datasheet for ABIN3044486
anti-PROC antibody (C-Term)

3 Images

10 Publications

[Go to Product page](#)

Overview

Quantity:	100 µg
Target:	PROC
Binding Specificity:	AA 446-461, C-Term
Reactivity:	Human
Host:	Rabbit
Clonality:	Polyclonal
Conjugate:	This PROC antibody is un-conjugated
Application:	Western Blotting (WB), Immunohistochemistry (Paraffin-embedded Sections) (IHC (p))

Product Details

Purpose:	Rabbit IgG polyclonal antibody for Vitamin K-dependent protein C(PROC) detection. Tested with WB, IHC-P in Human.
Immunogen:	A synthetic peptide corresponding to a sequence at the C-terminus of human Protein C(446-461aa HGHIRDKEAPQKSWAP).
Sequence:	HGHIRDKEAP QKSWAP
Isotype:	IgG
Cross-Reactivity (Details):	No cross reactivity with other proteins.
Characteristics:	<p>Rabbit IgG polyclonal antibody for Vitamin K-dependent protein C(PROC) detection. Tested with WB, IHC-P in Human.</p> <p>Gene Name: protein C(inactivator of coagulation factors Va and VIIIa)</p> <p>Protein Name: Vitamin K-dependent protein C</p>

Product Details

Purification: Immunogen affinity purified.

Target Details

Target: PROC

Alternative Name: PROC ([PROC Products](#))

Target Type: Viral Protein

Background: Protein C(PROC), also called PC, is a zymogenic(inactive) protein, the activated form of which plays an important role in regulating blood clotting, inflammation, cell death and maintaining the permeability of blood vessel walls in humans and other animals. The PROC gene is mapped on 2q14.3. The PROC gene contains 8 exons and spans about 11 kb by Foster et al. The conversion of protein C to a protease with anticoagulant function by thrombin requires as a cofactor thrombomodulin, an endothelial cell membrane protein. Riewald et al. demonstrated that activated protein C uses the endothelial cell protein C receptor as a coreceptor for cleavage of protease-activated receptor-1 on endothelial cells. Faust et al. demonstrated that the endothelial pathways required for protein C activation are impaired in severe meningococcal sepsis. They stated that improvement in the outcome of children with meningococcal sepsis who were treated with unactivated protein C concentrates had been described in case reports and in 1 uncontrolled series.

Synonyms: Activation peptide antibody|Anticoagulant protein C antibody|APC antibody|Autoprothrombin IIA antibody|Blood coagulation factor XIV antibody|EC 3.4.21.69 antibody|PC antibody|proC antibody|PROC_HUMAN antibody|PROC1 antibody|Protein C(inactivator of coagulation factors Va and VIIIa) antibody|THPH3 antibody|THPH4 antibody|Vitamin K dependent protein C antibody|Vitamin K dependent protein C precursor antibody

UniProt: [P04070](#)

Application Details

Application Notes: WB: Concentration: 0.1-0.5 µg/mL, Tested Species: Human
IHC-P: Concentration: 0.5-1 µg/mL, Tested Species: Human, Epitope Retrieval by Heat: Boiling the paraffin sections in 10 mM citrate buffer, pH 6.0, for 20 mins is required for the staining of formalin/paraffin sections.
Notes: Tested Species: Species with positive results. Predicted Species: Species predicted to be

Application Details

fit for the product based on sequence similarities. Other applications have not been tested.
Optimal dilutions should be determined by end users.

Comment: Antibody can be supported by chemiluminescence kit ABIN921124 in WB, supported by ABIN921231 in IHC(P).

Restrictions: For Research Use only

Handling

Format: Lyophilized

Reconstitution: Add 0.2 mL of distilled water will yield a concentration of 500 µg/mL.

Concentration: 500 µg/mL

Buffer: Each vial contains 5 mg BSA, 0.9 mg NaCl, 0.2 mg Na₂HPO₄, 0.05 mg Thimerosal, 0.05 mg Sodium azide.

Preservative: Thimerosal (Merthiolate), Sodium azide

Precaution of Use: This product contains Sodium azide and Thimerosal (Merthiolate): POISONOUS AND HAZARDOUS SUBSTANCES which should be handled by trained staff only.

Handling Advice: Avoid repeated freezing and thawing.

Storage: 4 °C/-20 °C

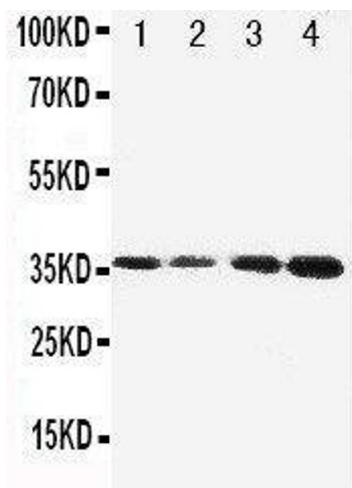
Storage Comment: At -20°C for one year. After reconstitution, at 4°C for one month.
It can also be aliquotted and stored frozen at -20 °C for a longer time. Avoid repeated freezing and thawing.

Expiry Date: 12 months

Publications

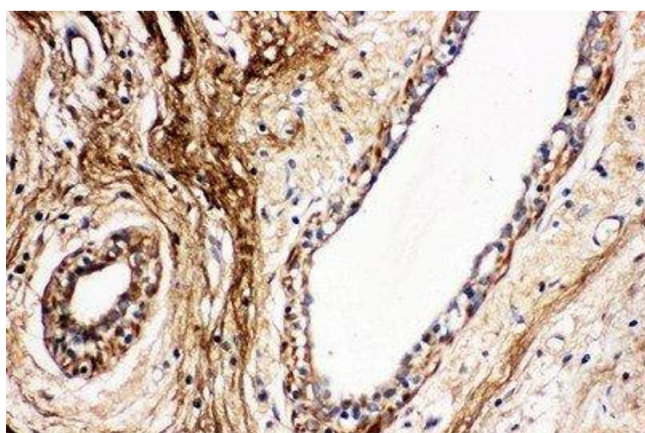
Product cited in: Whiteland, Nicholls, Shimeld, Easty, Williams, Hill: "Immunohistochemical detection of T-cell subsets and other leukocytes in paraffin-embedded rat and mouse tissues with monoclonal antibodies." in: **The journal of histochemistry and cytochemistry : official journal of the Histochemistry Society**, Vol. 43, Issue 3, pp. 313-20, (1995) ([PubMed](#)).

There are more publications referencing this product on: [Product page](#)



Western Blotting

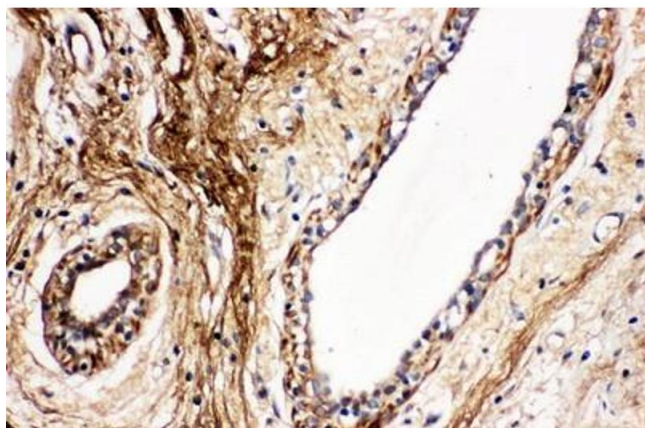
Image 1. Anti-Protein C antibody, Western blotting Lane 1: JURKAT Cell Lysate Lane 2: CEM Cell Lysate Lane 3: SMMC Cell Lysate Lane 4: HELA Cell Lysate



protein C (BA3694) 乳腺癌标本, 石蜡切片, SABC法, DAB显色.

Immunohistochemistry

Image 2. Anti-Protein C antibody, IHC(P) IHC(P): Human Mammary Cancer Tissue



Immunohistochemistry

Image 3. IHC analysis of Protein C using anti- Protein C antibody . Protein C was detected in paraffin-embedded section of human mammary cancer tissues. Heat mediated antigen retrieval was performed in citrate buffer (pH6, epitope retrieval solution) for 20 mins. The tissue section was blocked with 10% goat serum. The tissue section was then incubated with 1µg/ml rabbit anti- Protein C Antibody overnight at 4°C. Biotinylated goat anti-rabbit IgG was used as secondary antibody and incubated for 30 minutes at 37°C. The tissue section was developed using Streptavidin-Biotin-Complex (SABC)(Catalog # SA1022) with DAB as the chromogen.