

Datasheet for ABIN3044487
anti-SERPINA3 antibody (Middle Region)



[Go to Product page](#)

2 Images

Overview

Quantity:	100 µg
Target:	SERPINA3
Binding Specificity:	AA 218-232, Middle Region
Reactivity:	Human
Host:	Rabbit
Clonality:	Polyclonal
Conjugate:	This SERPINA3 antibody is un-conjugated
Application:	Western Blotting (WB), Immunohistochemistry (IHC)

Product Details

Purpose:	Anti-AACT/SERPINA3 Antibody Picoband®
Immunogen:	A synthetic peptide corresponding to a sequence in the middle region of human alpha 1 Antichymotrypsin.
Sequence:	EMPFD PQDTH QSRFY
Isotype:	IgG
Cross-Reactivity (Details):	No cross-reactivity with other proteins
Characteristics:	Anti-AACT/SERPINA3 Antibody (ABIN3044487). Tested in IHC, WB applications. This antibody reacts with Human. The brand Picoband indicates this is a premium antibody that guarantees superior quality, high affinity, and strong signals with minimal background in Western blot applications. Only our best-performing antibodies are designated as Picoband, ensuring unmatched performance.

Product Details

Purification: Immunogen affinity purified.

Target Details

Target: SERPINA3

Alternative Name: SERPINA3 ([SERPINA3 Products](#))

Background: Synonyms: Alpha-1-antichymotrypsin,ACT,Cell growth-inhibiting gene 24/25 protein,Serpin A3,Alpha-1-antichymotrypsin His-Pro-less,SERPINA3,AACT,GIG24, GIG25,
Tissue Specificity: Plasma. Synthesized in the liver. Like the related alpha-1-antitrypsin, its concentration increases in the acute phase of inflammation or infection. Found in the amyloid plaques from the hippocampus of Alzheimer disease brains. .
Background: Alpha 1-antichymotrypsin, also called serpin peptidase inhibitor, clade A (alpha-1 antiproteinase, antitrypsin), member 3 or GIG24 is an alpha globulin glycoprotein that is a member of the serpin superfamily. In humans, it is encoded by the SERPINA3 gene. This gene is mapped to 14q32.13. The protein encoded by this gene is a plasma protease inhibitor and member of the serine protease inhibitor class. Polymorphisms in this protein appear to be tissue specific and influence protease targeting. Variations in this protein's sequence have been implicated in Alzheimer's disease, and deficiency of this protein has been associated with liver disease. Mutations have been identified in patients with Parkinson disease and chronic obstructive pulmonary disease.
Sequence Similarities: Belongs to the serpin family.

Molecular Weight: 57 kDa

UniProt: [P01011](#)

Application Details

Application Notes: Immunohistochemistry (Paraffin-embedded Section), 0.5-1 µg/mL, Human
Western blot, 0.1-0.5 µg/mL, Human
1. Chappell, S., Daly, L., Morgan, K., Baranes, T. G., Roca, J., Rabinovich, R., Millar, A., Donnelly, S. C., Keatings, V., MacNee, W., Stolk, J., Hiemstra, P., Miniati, M., Monti, S., O'Connor, C. M., Kalsheker, N. Cryptic haplotypes of SERPINA1 confer susceptibility to chronic obstructive pulmonary disease. Hum. Mutat. 27: 103-109, 2006. 2. Wang, X., DeKosky, S. T., Lueddecking-Zimmer, E., Ganguli, M., Kamboh, M. I. Genetic variation in alpha-1-antichymotrypsin and its association with Alzheimer's disease. Hum. Genet. 110: 356-365, 2002.

Comment: Antibody can be supported by chemiluminescence kit ABIN921124 in WB, supported by

Application Details

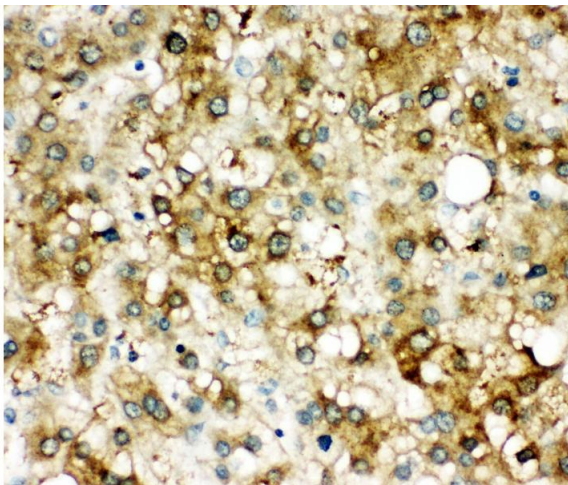
ABIN921231 in IHC(P).

Restrictions: For Research Use only

Handling

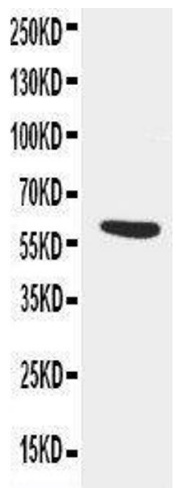
Format:	Lyophilized
Reconstitution:	Add 0.2 mL of distilled water will yield a concentration of 500 µg/mL.
Concentration:	500 µg/mL
Buffer:	Each vial contains 5 mg BSA, 0.9 mg NaCl, 0.2 mg Na ₂ HPO ₄ , 0.05 mg Thimerosal, 0.05 mg Sodium azide.
Preservative:	Thimerosal (Merthiolate), Sodium azide
Precaution of Use:	This product contains Thimerosal (Merthiolate) and Sodium azide: POISONOUS AND HAZARDOUS SUBSTANCES which should be handled by trained staff only.
Handling Advice:	Avoid repeated freezing and thawing.
Storage:	4 °C,-20 °C
Storage Comment:	Store at -20°C for one year from date of receipt. After reconstitution, at 4°C for one month. It can also be aliquotted and stored frozen at -20°C for six months. Avoid repeated freeze-thaw cycles.
Expiry Date:	12 months

Images



Immunohistochemistry

Image 1. Anti-alpha 1 Antichymotrypsin antibody, IHC(P)
IHC(P): Human Liver Cancer Tissue



Western Blotting

Image 2. Anti-alpha 1 Antichymotrypsin antibody, Western blotting WB: SMMC Cell Lysate