

Datasheet for ABIN3044492  
**anti-PPP2CA antibody (N-Term)**



[Go to Product page](#)

3 Images

1 Publication

## Overview

Quantity:	100 µg
Target:	PPP2CA
Binding Specificity:	AA 6-20, N-Term
Reactivity:	Human, Rat
Host:	Rabbit
Clonality:	Polyclonal
Conjugate:	This PPP2CA antibody is un-conjugated
Application:	Western Blotting (WB), Immunohistochemistry (Paraffin-embedded Sections) (IHC (p))

## Product Details

Purpose:	Rabbit IgG polyclonal antibody for Serine/threonine-protein phosphatase 2A catalytic subunit alpha isoform(PPP2CA) detection. Tested with WB, IHC-P in Human,Mouse,Rat.
Immunogen:	A synthetic peptide corresponding to a sequence at the N-terminus of human PP2A-alpha (6-20aa FTKELDQWIEQLNEC), identical to the related rat and mouse sequences.
Sequence:	FTKELDQWIE QLNEC
Isotype:	IgG
Cross-Reactivity (Details):	Predicted Cross Reactivity: mouse No cross reactivity with other proteins. Predicted Cross Reactivity: Species predicted to be fit for the product based on sequence similarities.
Characteristics:	Rabbit IgG polyclonal antibody for Serine/threonine-protein phosphatase 2A catalytic subunit

## Product Details

---

alpha isoform(PPP2CA) detection. Tested with WB, IHC-P in Human,Mouse,Rat.

Gene Name: protein phosphatase 2, catalytic subunit, alpha isozyme

Protein Name: Serine/threonine-protein phosphatase 2A catalytic subunit alpha isoform(PP2A-alpha)

---

Purification: Immunogen affinity purified.

---

## Target Details

---

Target: PPP2CA

---

Alternative Name: PPP2CA ([PPP2CA Products](#))

---

Background: The catalytic subunit of human protein phosphatase 2A(PPP2CA) encodes a 309-amino acid polypeptide. It is localized to chromosome 5. The gene(approximately 30 kbp) is composed of seven exons and six introns. It is predicted to be important for phosphatase enzymatic activity. Methylation of the C-terminal leucine residue(Leu309) of protein serine/threonine phosphatase 2A catalytic subunit(PP2AC) is known to regulate catalytic activity in vitro. Furthermore, PP2A has a fundamental role in cardiac function, and suggests that disturbances in protein phosphatase expression and activity may cause or exacerbate the course of cardiac diseases.

Synonyms: PP2A alpha antibody|PP2A-alpha antibody|PP2AA\_HUMAN antibody|PP2Aalpha antibody|PP2Ac antibody|PP2CA antibody|PP2Calpha antibody|PPP2CA antibody|Protein phosphatase 2(formerly 2A) catalytic subunit alpha isoform antibody|Protein phosphatase 2 catalytic subunit alpha isoform antibody|Protein phosphatase 2, catalytic subunit, alpha isozyme antibody|Protein phosphatase 2A catalytic subunit, alpha isoform antibody|Replication protein C antibody|RP C antibody|RP-C antibody|RPC antibody|Serine/threonine protein phosphatase 2A catalytic subunit alpha isoform antibody|Serine/threonine-protein phosphatase 2A catalytic subunit alpha isoform antibody

---

UniProt: [P67775](#)

---

Pathways: [PI3K-Akt Signaling](#), [Mitotic G1-G1/S Phases](#), [Hepatitis C](#), [Toll-Like Receptors Cascades](#)

---

## Application Details

---

Application Notes: WB: Concentration: 0.1-0.5 µg/mL, Tested Species: Human, Rat, Predicted Species: Mouse  
IHC-P: Concentration: 0.5-1 µg/mL, Tested Species: Human, Rat, Predicted Species: Mouse,  
Epitope Retrieval by Heat: Boiling the paraffin sections in 10 mM citrate buffer, pH 6.0, for 20 mins is required for the staining of formalin/paraffin sections.

---

## Application Details

---

Notes: Tested Species: Species with positive results. Predicted Species: Species predicted to be fit for the product based on sequence similarities. Other applications have not been tested.  
Optimal dilutions should be determined by end users.

Comment: Antibody can be supported by chemiluminescence kit ABIN921124 in WB, supported by ABIN921231 in IHC(P).

Restrictions: For Research Use only

## Handling

---

Format: Lyophilized

Reconstitution: Add 0.2 mL of distilled water will yield a concentration of 500 µg/mL.

Concentration: 500 µg/mL

Buffer: Each vial contains 5 mg BSA, 0.9 mg NaCl, 0.2 mg Na<sub>2</sub>HPO<sub>4</sub>, 0.05 mg Thimerosal, 0.05 mg Sodium azide.

Preservative: Thimerosal (Merthiolate), Sodium azide

Precaution of Use: This product contains Sodium azide and Thimerosal (Merthiolate): POISONOUS AND HAZARDOUS SUBSTANCES which should be handled by trained staff only.

Handling Advice: Avoid repeated freezing and thawing.

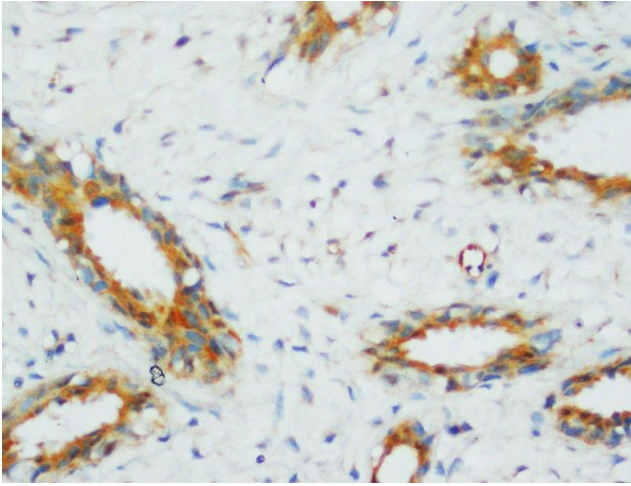
Storage: 4 °C/-20 °C

Storage Comment: At -20°C for one year. After reconstitution, at 4°C for one month.  
It can also be aliquotted and stored frozen at -20 °C for a longer time. Avoid repeated freezing and thawing.

## Publications

---

Product cited in: Tian, Qiu, Zhao, Li, Guo: "Sphingomyelinase-induced ceramide production stimulate calcium-independent JNK and PP2A activation following cerebral ischemia." in: **Brain injury**, Vol. 23, Issue 13-14, pp. 1073-80, (2009) ([PubMed](#)).



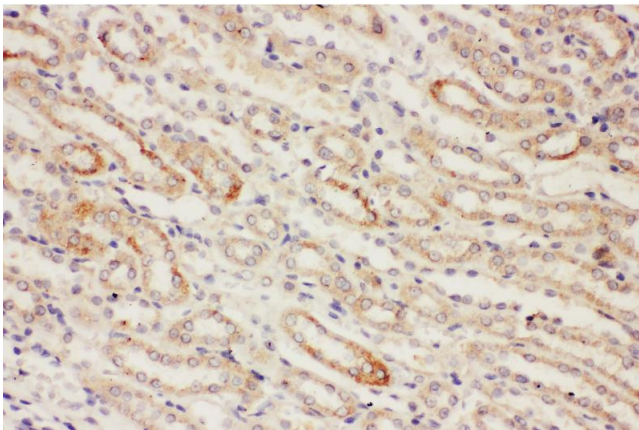
### Immunohistochemistry

**Image 1.** Anti-PP2A antibody, IHC(P) IHC(P): Human Mammary Cancer Tissue



### Western Blotting

**Image 2.**



### Immunohistochemistry

**Image 3.** Anti-PP2A antibody, IHC(P) IHC(P): Rat Kidney Tissue