



[Go to Product page](#)

Datasheet for ABIN3044515
anti-DIABLO antibody (AA 56-239)

4 Images

1 Publication

Overview

| | |
|----------------------|---|
| Quantity: | 100 µg |
| Target: | DIABLO |
| Binding Specificity: | AA 56-239 |
| Reactivity: | Human, Mouse, Rat |
| Host: | Rabbit |
| Clonality: | Polyclonal |
| Application: | Western Blotting (WB), ELISA, Immunohistochemistry (Paraffin-embedded Sections) (IHC (p)) |

Product Details

| | |
|-----------------------------|---|
| Purpose: | Rabbit IgG polyclonal antibody for Diablo homolog, mitochondrial(DIABLO) detection. Tested with WB, IHC-P, ELISA in Human,Mouse,Rat. |
| Immunogen: | E. coli-derived human Smac/Diablo recombinant protein (Position: A56-D239). Human Smac/Diablo shares 88.6% amino acid (aa) sequence identity with mouse Smac/Diablo. |
| Isotype: | IgG |
| Cross-Reactivity (Details): | No cross reactivity with other proteins. |
| Characteristics: | Rabbit IgG polyclonal antibody for Diablo homolog, mitochondrial(DIABLO) detection. Tested with WB, IHC-P, ELISA in Human,Mouse,Rat. Gene Name: diablo, IAP-binding mitochondrial protein Protein Name: Diablo homolog, mitochondrial |
| Purification: | Immunogen affinity purified. |

Target Details

Target: DIABLO

Alternative Name: DIABLO ([DIABLO Products](#))

Background: Diablo homolog (DIABLO), also referred to as second mitochondria-derived activator of caspases or SMAC, is a mitochondrial protein that in humans is encoded by the DIABLO (direct IAP binding protein with low pI) gene on chromosome 12. The encoded mitochondrial protein enters the cytosol when cells undergo apoptosis, and allows activation of caspases by binding to inhibitor of apoptosis proteins. Overexpression of the encoded protein sensitizes tumor cells to apoptosis. A mutation in this gene is associated with young-adult onset of nonsyndromic deafness-64. Alternative splicing results in multiple transcript variants encoding different isoforms.

Synonyms: 0610041G12Rik antibody|DBLOH_HUMAN antibody|DBOH antibody|diablo antibody|Diablo homolog (Drosophila) antibody|Diablo homolog antibody|Diablo homolog mitochondrial antibody|DIABLO S antibody|Direct IAP binding protein with low pI antibody|Direct IAP-binding protein with low pI antibody|FLJ10537 antibody|FLJ25049 antibody|mitochondrial antibody|Mitochondrial Smac protein antibody|Second mitochondria derived activator of caspase antibody|Second mitochondria-derived activator of caspase antibody|SMAC 3 antibody|Smac antibody|Smac protein antibody|SMAC3 antibody

Gene ID: 56616

Pathways: [Apoptosis, Caspase Cascade in Apoptosis, Positive Regulation of Endopeptidase Activity](#)

Application Details

Application Notes: WB: Concentration: 0.1-0.5 µg/mL, Tested Species: Human, Rat
IHC-P: Concentration: 0.5-1 µg/mL, Tested Species: Human, Mouse, Rat, Epitope Retrieval by Heat: Boiling the paraffin sections in 10 mM citrate buffer, pH 6.0, for 20 mins is required for the staining of formalin/paraffin sections.
ELISA: Concentration: 0.1-0.5 µg/mL, Tested Species: Human
Notes: Tested Species: Species with positive results. Other applications have not been tested. Optimal dilutions should be determined by end users.

Comment: Antibody can be supported by chemiluminescence kit ABIN921124 in WB, supported by ABIN921231 in IHC(P).

Restrictions: For Research Use only

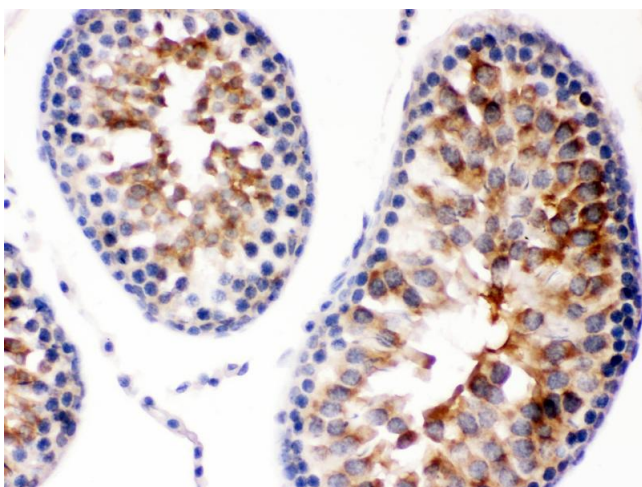
Handling

| | |
|--------------------|---|
| Format: | Lyophilized |
| Reconstitution: | Add 0.2 mL of distilled water will yield a concentration of 500 µg/mL. |
| Concentration: | 500 µg/mL |
| Buffer: | Each vial contains 5 mg BSA, 0.9 mg NaCl, 0.2 mg Na ₂ HPO ₄ , 0.05 mg Sodium azide. |
| Preservative: | Sodium azide |
| Precaution of Use: | This product contains Sodium azide: a POISONOUS AND HAZARDOUS SUBSTANCE which should be handled by trained staff only. |
| Handling Advice: | Avoid repeated freezing and thawing. |
| Storage: | 4 °C/-20 °C |
| Storage Comment: | At -20°C for one year. After reconstitution, at 4°C for one month. It can also be aliquotted and stored frozen at -20 °C for a longer time. Avoid repeated freezing and thawing. |

Publications

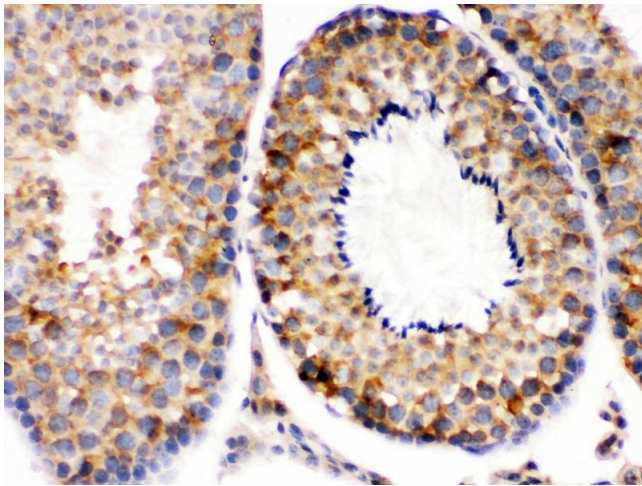
| | |
|-------------------|---|
| Product cited in: | Whiteland, Nicholls, Shimeld, Easty, Williams, Hill: "Immunohistochemical detection of T-cell subsets and other leukocytes in paraffin-embedded rat and mouse tissues with monoclonal antibodies." in: The journal of histochemistry and cytochemistry : official journal of the Histochemistry Society , Vol. 43, Issue 3, pp. 313-20, (1995) (PubMed). |
|-------------------|---|

Images



Immunohistochemistry (Paraffin-embedded Sections)

Image 1. Smac/Diablo was detected in paraffin-embedded sections of rat testis tissues using rabbit anti- Smac/Diablo Antigen Affinity purified polyclonal antibody at 1 µg/mL. The immunohistochemical section was developed using SABC method



Immunohistochemistry (Paraffin-embedded Sections)

Image 2. Smac/Diablo was detected in paraffin-embedded sections of mouse testis tissues using rabbit anti-Smac/Diablo Antigen Affinity purified polyclonal antibody at 1 µg/mL. The immunohistochemical section was developed using SABC method



Western Blotting

Image 3. Western blot analysis of Smac/Diablo expression in rat testis extract (lane 1), 22RV1 whole cell lysates (lane 2) and SKOV whole cell lysates (lane 3). Smac/Diablo at 25KD was detected using rabbit anti- Smac/Diablo Antigen Affinity purified polyclonal antibody at 0.5 µg/mL. The blot was developed using chemiluminescence (ECL) method

Please check the [product details page](#) for more images. Overall 4 images are available for ABIN3044515.