

Datasheet for ABIN3044529
anti-Nestin antibody (N-Term)

5 Images

18 Publications

[Go to Product page](#)

Overview

| | |
|----------------------|--|
| Quantity: | 100 µg |
| Target: | Nestin (NES) |
| Binding Specificity: | AA 252-290, N-Term |
| Reactivity: | Human, Rat |
| Host: | Rabbit |
| Clonality: | Polyclonal |
| Conjugate: | This Nestin antibody is un-conjugated |
| Application: | Western Blotting (WB), Immunohistochemistry (Paraffin-embedded Sections) (IHC (p)) |

Product Details

| | |
|-----------------------------|--|
| Purpose: | Rabbit IgG polyclonal antibody for Protein Mdm4(MDM4) detection. Tested with WB, IHC-P in Human,Rat. |
| Immunogen: | A synthetic peptide corresponding to a sequence at the N-terminus of human Nestin (252-290aa ERLRATEKFQLAVEALEQEKQGLQSQIAQVLEGRQQLAH), different from the related mouse sequence by four amino acids, and from the related rat sequence by five amino acids. |
| Sequence: | ERLRATEKFQ LAVEALEQEK QGLQSQIAQV LEGRQQLAH |
| Isotype: | IgG |
| Cross-Reactivity (Details): | No cross reactivity with other proteins. |
| Characteristics: | Rabbit IgG polyclonal antibody for Protein Mdm4(MDM4) detection. Tested with WB, IHC-P in Human,Rat. Gene Name: nestin |

Product Details

Protein Name: Nestin

Purification: Immunogen affinity purified.

Target Details

Target: Nestin (NES)

Alternative Name: NES ([NES Products](#))

Background: Nestin is a type VI intermediate filament (IF) protein that in humans is encoded by the NES gene. This gene is mapped to 1q23.1. Distribution and expression of nestin in mitotically active cells suggests it plays a role in regulation of the assembly and disassembly of intermediate filaments, which, together with other structural proteins, participate in remodeling of the cell. The role of nestin in dynamic cells, particularly structural organization of the cell, appears strictly regulated by phosphorylation, especially its integration into heterogeneous intermediate filaments together with vimentin or α -internexin. Furthermore, nestin expression has been extensively used as a marker for central nervous system (CNS) progenitor cells in different contexts, based on observations indicating a correlation between nestin expression and this cell type in vivo.

Synonyms: ESTM 46 antibody|FLJ 21841 antibody|FLJ21841 antibody|Intermediate filament protein antibody|Nbla00170 antibody|nes antibody| NEST_HUMAN antibody|Nestin antibody

Gene ID: 10763

UniProt: [P48681](#)

Application Details

Application Notes: WB: Concentration: 0.1-0.5 μ g/mL, Tested Species: Human
IHC-P: Concentration: 0.5-1 μ g/mL, Tested Species: Human, Rat, Epitope Retrieval by Heat: Boiling the paraffin sections in 10 mM citrate buffer, pH 6.0, for 20 mins is required for the staining of formalin/paraffin sections.
Notes: Tested Species: Species with positive results. Other applications have not been tested.
Optimal dilutions should be determined by end users.

Comment: Antibody can be supported by chemiluminescence kit ABIN921124 in WB, supported by ABIN921231 in IHC(P).

Restrictions: For Research Use only

Handling

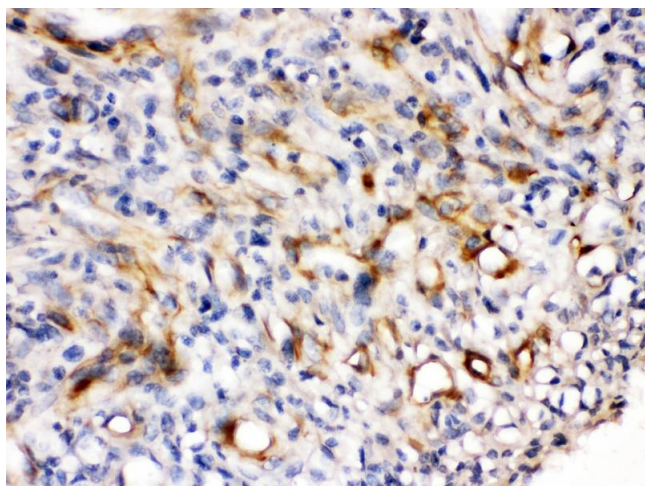
| | |
|--------------------|---|
| Format: | Lyophilized |
| Reconstitution: | Add 0.2 mL of distilled water will yield a concentration of 500 µg/mL. |
| Concentration: | 500 µg/mL |
| Buffer: | Each vial contains 5 mg BSA, 0.9 mg NaCl, 0.2 mg Na ₂ HPO ₄ , 0.05 mg Sodium azide. |
| Preservative: | Sodium azide |
| Precaution of Use: | This product contains Sodium azide: a POISONOUS AND HAZARDOUS SUBSTANCE which should be handled by trained staff only. |
| Handling Advice: | Avoid repeated freezing and thawing. |
| Storage: | 4 °C/-20 °C |
| Storage Comment: | At -20°C for one year. After reconstitution, at 4°C for one month. It can also be aliquotted and stored frozen at -20 °C for a longer time. Avoid repeated freezing and thawing. |

Publications

Product cited in: Lang, Schulte, Goddard, Hedrick, Schulte, Wei, Schmiedt: "Transplantation of mouse embryonic stem cells into the cochlea of an auditory-neuropathy animal model: effects of timing after injury." in: **Journal of the Association for Research in Otolaryngology : JARO**, Vol. 9, Issue 2, pp. 225-40, (2008) ([PubMed](#)).

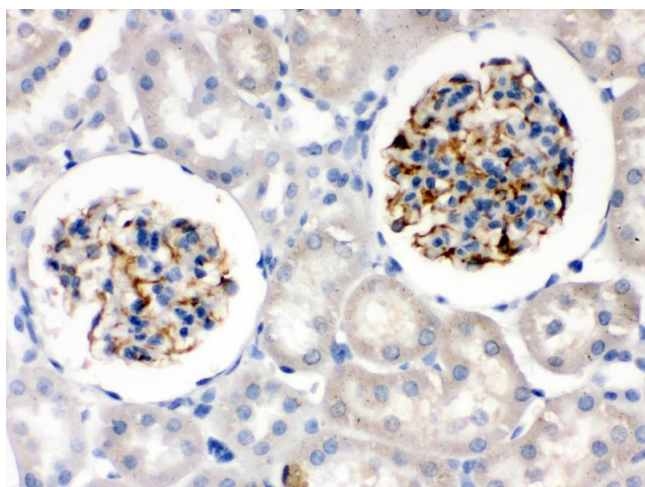
Lang, Ebihara, Schmiedt, Minamiguchi, Zhou, Smythe, Liu, Ogawa, Schulte: "Contribution of bone marrow hematopoietic stem cells to adult mouse inner ear: mesenchymal cells and fibrocytes." in: **The Journal of comparative neurology**, Vol. 496, Issue 2, pp. 187-201, (2006) ([PubMed](#)).

There are more publications referencing this product on: [Product page](#)



Immunohistochemistry (Paraffin-embedded Sections)

Image 1. Nestin was detected in paraffin-embedded sections of human melanoma tissues using rabbit anti-Nestin Antigen Affinity purified polyclonal antibody at 1 μ g/mL. The immunohistochemical section was developed using SABC method



Immunohistochemistry (Paraffin-embedded Sections)

Image 2. Nestin was detected in paraffin-embedded sections of rat kidney tissues using rabbit anti-Nestin Antigen Affinity purified polyclonal antibody at 1 μ g/mL. The immunohistochemical section was developed using SABC method



Western Blotting

Image 3. Western blot analysis of Nestin expression in HELA whole cell lysates (lane 1) and HEPG2 whole cell lysates (lane 2). Nestin at 230KD was detected using rabbit anti-Nestin Antigen Affinity purified polyclonal antibody at 0.5 μ g/mL. The blot was developed using chemiluminescence (ECL) method

Please check the [product details page](#) for more images. Overall 5 images are available for ABIN3044529.