

Datasheet for ABIN3044534  
**anti-DARPP32 antibody (N-Term)**[Go to Product page](#)

## 4 Images

## Overview

|                      |  |
|----------------------|--|
| Quantity:            | 100 µg   |
| Target:              | DARPP32 (PPP1R1B)  |
| Binding Specificity: | AA 1-36, N-Term  |
| Reactivity:          | Human, Mouse, Rat  |
| Host:                | Rabbit   |
| Clonality:           | Polyclonal   |
| Conjugate:           | This DARPP32 antibody is un-conjugated   |
| Application:         | Western Blotting (WB), Immunohistochemistry (Paraffin-embedded Sections) (IHC (p)) |

## Product Details

|                             |  |
|-----------------------------|--|
| Purpose:                    | Rabbit IgG polyclonal antibody for Protein phosphatase 1 regulatory subunit 1B(PPP1R1B) detection. Tested with WB, IHC-P in Human,Mouse,Rat.   |
| Immunogen:                  | A synthetic peptide corresponding to a sequence at the N-terminus of human DARPP32 (1-36aa MDPKDRKKIQFSVPAPPSQLDPRQVEMIRRRRPTPA), identical to the related mouse and rat sequences.                              |
| Sequence:                   | MDPKDRKKIQ FSVAPPSQL DPRQVEMIRR RRPTPA   |
| Isotype:                    | IgG  |
| Cross-Reactivity (Details): | No cross reactivity with other proteins.   |
| Characteristics:            | Rabbit IgG polyclonal antibody for Protein phosphatase 1 regulatory subunit 1B(PPP1R1B) detection. Tested with WB, IHC-P in Human,Mouse,Rat.<br>Gene Name: protein phosphatase 1 regulatory inhibitor subunit 1B |

## Product Details

Protein Name: Protein phosphatase 1 regulatory subunit 1B

Purification: Immunogen affinity purified.

## Target Details

Target: DARPP32 (PPP1R1B)

Alternative Name: PPP1R1B ([PPP1R1B Products](#))

Background: Protein phosphatase 1 regulatory subunit 1B (PPP1R1B), also known as dopamine- and cAMP-regulated neuronal phosphoprotein (DARPP-32), is a protein that in humans is encoded by the PPP1R1B gene. This gene encodes a bifunctional signal transduction molecule. Dopaminergic and glutamatergic receptor stimulation regulates its phosphorylation and function as a kinase or phosphatase inhibitor. As a target for dopamine, this gene may serve as a therapeutic target for neurologic and psychiatric disorders. Multiple transcript variants encoding different isoforms have been found for this gene.

Synonyms: DARPP 32 antibody|DARPP-32 antibody|Dopamine and cAMP regulated neuronal phosphoprotein 32 antibody|Dopamine and cAMP regulated neuronal phosphoprotein antibody|Dopamine and cAMP regulated phosphoprotein antibody|Dopamine and cAMP regulated phosphoprotein DARPP 32 antibody|Dopamine and cAMP regulated phosphoprotein DARPP32 antibody|Dopamine- and cAMP-regulated neuronal phosphoprotein antibody|FLJ20940 antibody|IPPD antibody|Neuronal phosphoprotein DARPP 32 antibody|PPP1R1B antibody|PPR1B\_HUMAN antibody|Protein phosphatase 1 regulatory (inhibitor) subunit 1B antibody|Protein phosphatase 1 regulatory subunit 1B antibody

Gene ID: 84152

## Application Details

Application Notes: WB: Concentration: 0.1-0.5 µg/mL, Tested Species: Human, Rat  
IHC-P: Concentration: 0.5-1 µg/mL, Tested Species: Human, Mouse, Rat, Epitope Retrieval by Heat: Boiling the paraffin sections in 10 mM citrate buffer, pH 6.0, for 20 mins is required for the staining of formalin/paraffin sections.  
Notes: Tested Species: Species with positive results. Other applications have not been tested.  
Optimal dilutions should be determined by end users.

Comment: Antibody can be supported by chemiluminescence kit ABIN921124 in WB, supported by ABIN921231 in IHC(P).

## Application Details

Restrictions: For Research Use only

## Handling

Format: Lyophilized

Reconstitution: Add 0.2 mL of distilled water will yield a concentration of 500 µg/mL.

Concentration: 500 µg/mL

Buffer: Each vial contains 5 mg BSA, 0.9 mg NaCl, 0.2 mg Na<sub>2</sub>HPO<sub>4</sub>, 0.05 mg Sodium azide.

Preservative: Sodium azide

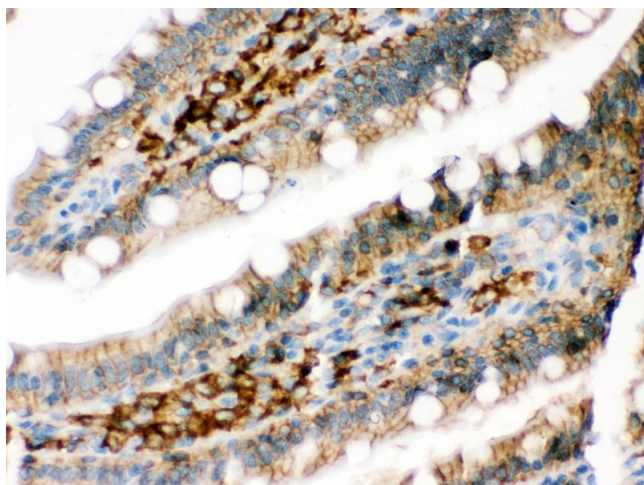
Precaution of Use: This product contains Sodium azide: a POISONOUS AND HAZARDOUS SUBSTANCE which should be handled by trained staff only.

Handling Advice: Avoid repeated freezing and thawing.

Storage: 4 °C/-20 °C

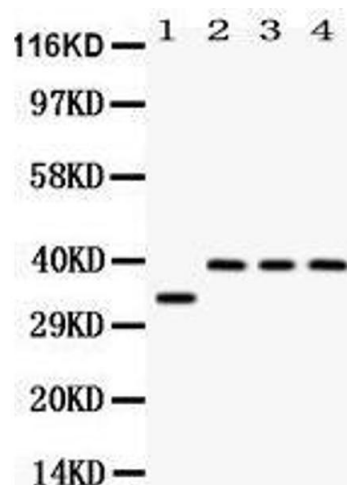
Storage Comment: At -20°C for one year. After reconstitution, at 4°C for one month.  
It can also be aliquotted and stored frozen at -20 °C for a longer time. Avoid repeated freezing and thawing.

## Images



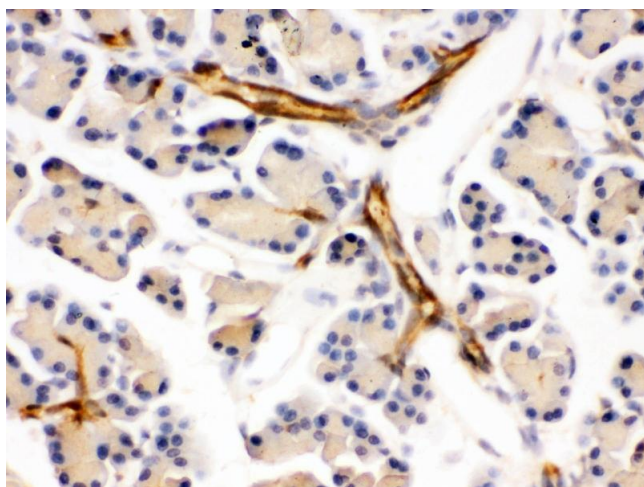
### Immunohistochemistry (Paraffin-embedded Sections)

**Image 1.** DARPP32 was detected in paraffin-embedded sections of rat intestine tissues using rabbit anti- DARPP32 Antigen Affinity purified polyclonal antibody at 1 µg/mL. The immunohistochemical section was developed using SABC method



#### Western Blotting

**Image 2.** Western blot analysis of DARPP32 expression in rat brain extract (lane 1), SW620 whole cell lysates (lane 2), 22RV1 whole cell lysates (lane 3) and HELA whole cell lysates (lane 4). DARPP32 at 34KD, 39KD was detected using rabbit anti- DARPP32 Antigen Affinity purified polyclonal antibody at 0.5 µg/mL. The blot was developed using chemiluminescence (ECL) method



#### Immunohistochemistry (Paraffin-embedded Sections)

**Image 3.** DARPP32 was detected in paraffin-embedded sections of mouse pancreas tissues using rabbit anti-DARPP32 Antigen Affinity purified polyclonal antibody at 1 µg/mL. The immunohistochemical section was developed using SABC method

Please check the [product details page](#) for more images. Overall 4 images are available for ABIN3044534.