

Datasheet for ABIN3044537
anti-Prokineticin 1 antibody (AA 20-105)[Go to Product page](#)[1 Image](#)[1 Publication](#)

Overview

Quantity:	100 µg
Target:	Prokineticin 1 (Prok1)
Binding Specificity:	AA 20-105
Reactivity:	Mouse
Host:	Rabbit
Clonality:	Polyclonal
Conjugate:	This Prokineticin 1 antibody is un-conjugated
Application:	Western Blotting (WB)

Product Details

Purpose:	Rabbit IgG polyclonal antibody for Prokineticin-1(PROK1) detection. Tested with WB in Mouse.
Immunogen:	E. coli-derived mouse Prokineticin 1 recombinant protein (Position: A20-F105). Mouse Prokineticin 1 shares 88.4% and 94.2% amino acid (aa) sequence identity with human and rat Prokineticin 1, respectively.
Isotype:	IgG
Cross-Reactivity (Details):	No cross reactivity with other proteins.
Characteristics:	Rabbit IgG polyclonal antibody for Prokineticin-1(PROK1) detection. Tested with WB in Mouse. Gene Name: prokineticin 1 Protein Name: Prokineticin-1
Purification:	Immunogen affinity purified.

Target Details

Target:	Prokineticin 1 (Prok1)
Alternative Name:	PROK1 (Prok1 Products)
Background:	<p>Prokineticin-1 is also known as EG-VEGF. The International Radiation Hybrid Mapping Consortium mapped the PROK1 gene to chromosome 1. The protein encoded by this gene induces proliferation, migration, and fenestration (the formation of membrane discontinuities) in capillary endothelial cells derived from endocrine glands. It has little or no effect on a variety of other endothelial and non-endothelial cell types. Its expression is restricted to the steroidogenic glands (ovary, testis, adrenal, and placenta), is induced by hypoxia, and often complementary to the expression of vascular endothelial growth factor (VEGF), suggesting that these molecules function in a coordinated manner.</p> <p>Synonyms: Black mamba toxin related protein antibody EG VEGF antibody EG-VEGF antibody EGVEGF antibody Endocrine-gland-derived vascular endothelial growth factor antibody Mambakine antibody PK1 antibody PRK1 antibody PROK1 antibody PROK1_HUMAN antibody Prokineticin-1 antibody</p>
Gene ID:	246691
UniProt:	Q14A28

Application Details

Application Notes:	WB: Concentration: 0.1-0.5 µg/mL, Tested Species: Mouse Notes: Tested Species: Species with positive results. Other applications have not been tested. Optimal dilutions should be determined by end users.
Comment:	Antibody can be supported by chemiluminescence kit ABIN921124 in WB.
Restrictions:	For Research Use only

Handling

Format:	Lyophilized
Reconstitution:	Add 0.2 mL of distilled water will yield a concentration of 500 µg/mL.
Concentration:	500 µg/mL
Buffer:	Each vial contains 5 mg BSA, 0.9 mg NaCl, 0.2 mg Na2HPO4, 0.05 mg Sodium azide.
Preservative:	Sodium azide

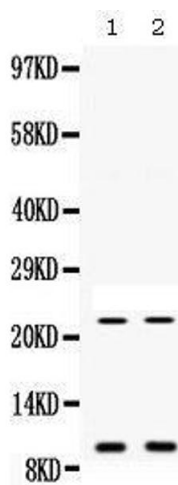
Handling

Precaution of Use:	This product contains Sodium azide: a POISONOUS AND HAZARDOUS SUBSTANCE which should be handled by trained staff only.
Handling Advice:	Avoid repeated freezing and thawing.
Storage:	4 °C/-20 °C
Storage Comment:	At -20°C for one year. After reconstitution, at 4°C for one month. It can also be aliquotted and stored frozen at -20 °C for a longer time. Avoid repeated freezing and thawing.

Publications

Product cited in:	Luchinat, Barbieri, Rubino, Kozyreva, Cantini, Banci: "In-cell NMR reveals potential precursor of toxic species from SOD1 fALS mutants." in: Nature communications , Vol. 5, pp. 5502, (2014) (PubMed).
-------------------	--

Images



Western Blotting

Image 1. Western blot analysis of Prokineticin 1 expression in mouse liver extract (lane 1) and mouse spleen extract (lane 2). Prokineticin 1 at 10KD, 23KD was detected using rabbit anti- Prokineticin 1 Antigen Affinity purified polyclonal antibody at 0.5 µg/mL. The blot was developed using chemiluminescence (ECL) method