

Datasheet for ABIN3044546

**anti-SLC2A9 antibody (Middle Region)**[Go to Product page](#)**1** Image

## Overview

Quantity:	100 µg
Target:	SLC2A9
Binding Specificity:	AA 262-297, Middle Region
Reactivity:	Human, Rat
Host:	Rabbit
Clonality:	Polyclonal
Conjugate:	This SLC2A9 antibody is un-conjugated
Application:	Western Blotting (WB), Immunohistochemistry (IHC), Immunofluorescence (IF), Flow Cytometry (FACS)

## Product Details

Purpose:	Anti-GLUT9/SLC2A9 Antibody Picoband®
Immunogen:	A synthetic peptide corresponding to a sequence in the middle region of human GLUT9.
Sequence:	EKHNEARAVK AFQTFLGKAD VSQEVEEVLA ESRVQR
Isotype:	IgG
Cross-Reactivity (Details):	No cross-reactivity with other proteins.
Characteristics:	Anti-GLUT9/SLC2A9 Antibody Picoband® (ABIN3044546). Tested in Flow Cytometry, IF, IHC, WB applications. This antibody reacts with Human, Rat. The brand Picoband indicates this is a premium antibody that guarantees superior quality, high affinity, and strong signals with minimal background in Western blot applications. Only our best-performing antibodies are designated as Picoband, ensuring unmatched performance.

## Product Details

---

Purification: Immunogen affinity purified.

## Target Details

---

Target: SLC2A9

Alternative Name: SLC2A9 ([SLC2A9 Products](#))

Background: Synonyms: Solute carrier family 2, facilitated glucose transporter member 9, Glucose transporter type 9, GLUT-9, SLC2A9, GLUT9,  
Tissue Specificity: Most strongly expressed in basolateral membranes of proximal renal tubular cells, liver and placenta. Also detected in lung, blood leukocytes, heart skeletal muscle and chondrocytes from articular cartilage. Isoform 2 is only detected in the apical membranes of polarized renal tubular cells and placenta. Isoform 1 and isoform 2 are detected in kidney membrane (at protein level).  
Background: Solute carrier family 2, facilitated glucose transporter member 9, also known as SLC2A9, is a protein that in humans is encoded by the SLC2A9 gene. This gene encodes a member of the SLC2A facilitative glucose transporter family. Members of this family play a significant role in maintaining glucose homeostasis. This gene is mapped to 4p16.1. The encoded protein may play a role in the development and survival of chondrocytes in cartilage matrices. This gene transports urate and fructose. It may have a role in the urate reabsorption by proximal tubules. This gene also transports glucose at low rate.

Molecular Weight: 55 kDa

Gene ID: 56606

## Application Details

---

Application Notes: Western blot, 0.1-0.5 µg/mL, Human  
Immunohistochemistry (Paraffin-embedded Section), 0.5-1 µg/mL, Human  
Immunofluorescence, 2 µg/mL, Human, Rat  
Flow Cytometry (Fixed), 1-3 µg/1x10<sup>6</sup> cells, Human  
1. Anzai, N., Ichida, K., Jutabha, P., Kimura, T., Babu, E., Jin, C. J., Srivastava, S., Kitamura, K., Hisatome, I., Endou, H., Sakurai, H. Plasma urate level is ly regulated by a voltage-driven urate efflux transporter URATv1 (SLC2A9) in humans. J. Biol. Chem. 283: 26834-26838, 2008. Note: Erratum: J. Biol. Chem. 283: 32152 only, 2008.  
2. Preitner, F., Bonny, O., Laverriere, A., Rotman, S., Firsov, D., Da Costa, A., Metref, S., Thorens, B. Glut9 is a major regulator of urate homeostasis and its genetic inactivation induces hyperuricosuria and urate nephropathy. Proc. Nat. Acad. Sci. 106: 15501-15506, 2009.

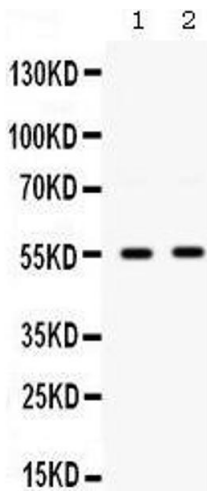
Application Details

Comment:	Antibody can be supported by chemiluminescence kit ABIN921124 in WB, supported by ABIN921231 in IHC(P).
Restrictions:	For Research Use only

Handling

Format:	Lyophilized
Reconstitution:	Add 0.2 mL of distilled water will yield a concentration of 500 µg/mL.
Concentration:	500 µg/mL
Buffer:	Each vial contains 5 mg BSA, 0.9 mg NaCl, 0.2 mg Na2HPO4, 0.05 mg Sodium azide.
Preservative:	Sodium azide
Precaution of Use:	This product contains Sodium azide: a POISONOUS AND HAZARDOUS SUBSTANCE which should be handled by trained staff only.
Handling Advice:	Avoid repeated freezing and thawing.
Storage:	4 °C,-20 °C
Storage Comment:	Store at -20°C for one year from date of receipt. After reconstitution, at 4°C for one month. It can also be aliquotted and stored frozen at -20°C for six months. Avoid repeated freeze-thaw cycles.

Images



**Western Blotting**

**Image 1.** Western blot analysis of GLUT9 expression in HepG2 whole cell lysates (lane 1) and A549 whole cell lysates (lane 2). GLUT9 at 55KD was detected using rabbit anti- GLUT9 Antigen Affinity purified polyclonal antibody at 0.5 µg/mL. The blot was developed using chemiluminescence (ECL) method