



[Go to Product page](#)

Datasheet for ABIN3044552
anti-TCF7L1 antibody (C-Term)

2 Images

Overview

Quantity:	100 µg
Target:	TCF7L1
Binding Specificity:	AA 561-588, C-Term
Reactivity:	Human
Host:	Rabbit
Clonality:	Polyclonal
Conjugate:	This TCF7L1 antibody is un-conjugated
Application:	Western Blotting (WB), Immunohistochemistry (Paraffin-embedded Sections) (IHC (p))

Product Details

Purpose:	Rabbit IgG polyclonal antibody for Transcription factor 7-like 1(TCF7L1) detection. Tested with WB, IHC-P in Human.
Immunogen:	A synthetic peptide corresponding to a sequence at the C-terminus of human TCF7L1 (561-588aa SFPATLHAHQALPVLQAQPLSLVTKSAH), different from the related mouse sequence by one amino acid.
Sequence:	SFPATLHAHQ ALPVLQAQPL SLVTKSAH
Isotype:	IgG
Cross-Reactivity (Details):	No cross reactivity with other proteins.
Characteristics:	Rabbit IgG polyclonal antibody for Transcription factor 7-like 1(TCF7L1) detection. Tested with WB, IHC-P in Human. Gene Name: transcription factor 7 like 1

Product Details

Protein Name: Transcription factor 7-like 1

Purification: Immunogen affinity purified.

Target Details

Target: TCF7L1

Alternative Name: TCF7L1 ([TCF7L1 Products](#))

Background: Transcription factor 7-like 1 (T-cell specific, HMG-box), also known as TCF7L1, is a human gene. This gene encodes a member of the T cell factor/lymphoid enhancer factor family of transcription factors. These transcription factors are activated by beta catenin, mediate the Wnt signaling pathway and are antagonized by the transforming growth factor beta signaling pathway. The encoded protein contains a high mobility group-box DNA binding domain and participates in the regulation of cell cycle genes and cellular senescence.

Synonyms: bHLHb21 antibody|HMG box transcription factor 3 antibody|HMG box transcription factor antibody|OTTMUSP00000023419 antibody|T cell factor 3 antibody|TCF 3 antibody|TCF-3 antibody|TCF3 antibody|Tcf7l1 antibody|TF7L1_HUMAN antibody|Transcription factor 7 like 1 (T-cell specific, HMG-box) antibody|Transcription factor 7 like 1 antibody|Transcription factor 7-like 1 antibody

Gene ID: 83439

Pathways: [WNT Signaling](#), [Stem Cell Maintenance](#)

Application Details

Application Notes: WB: Concentration: 0.1-0.5 µg/mL, Tested Species: Human
IHC-P: Concentration: 0.5-1 µg/mL, Tested Species: Human, Epitope Retrieval by Heat: Boiling the paraffin sections in 10 mM citrate buffer, pH 6.0, for 20 mins is required for the staining of formalin/paraffin sections.
Notes: Tested Species: Species with positive results. Other applications have not been tested. Optimal dilutions should be determined by end users.

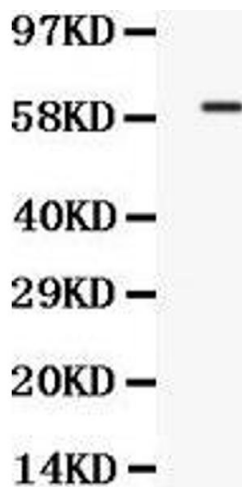
Comment: Antibody can be supported by chemiluminescence kit ABIN921124 in WB, supported by ABIN921231 in IHC(P).

Restrictions: For Research Use only

Handling

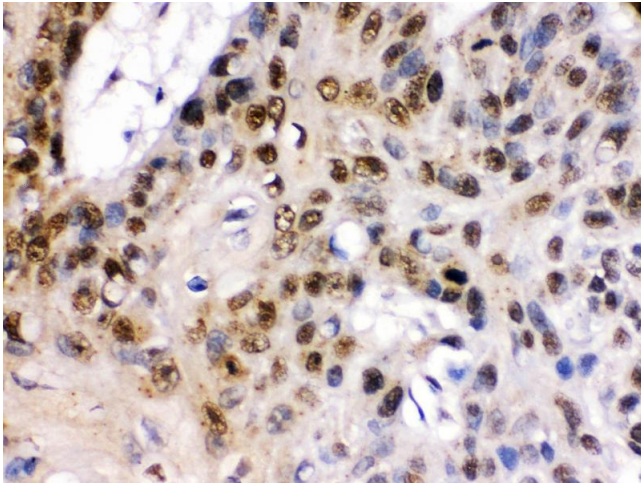
Format:	Lyophilized
Reconstitution:	Add 0.2 mL of distilled water will yield a concentration of 500 µg/mL.
Concentration:	500 µg/mL
Buffer:	Each vial contains 5 mg BSA, 0.9 mg NaCl, 0.2 mg Na ₂ HPO ₄ , 0.05 mg Sodium azide.
Preservative:	Sodium azide
Precaution of Use:	This product contains Sodium azide: a POISONOUS AND HAZARDOUS SUBSTANCE which should be handled by trained staff only.
Handling Advice:	Avoid repeated freezing and thawing.
Storage:	4 °C/-20 °C
Storage Comment:	At -20°C for one year. After reconstitution, at 4°C for one month. It can also be aliquotted and stored frozen at -20 °C for a longer time. Avoid repeated freezing and thawing.

Images



Western Blotting

Image 1. Western blot analysis of TCF7L1 expression in COLO320 whole cell lysates (lane 1). TCF7L1 at 63KD was detected using rabbit anti- TCF7L1 Antigen Affinity purified polyclonal antibody at 0.5 µg/mL. The blot was developed using chemiluminescence (ECL) method



Immunohistochemistry (Paraffin-embedded Sections)

Image 2. TCF7L1 was detected in paraffin-embedded sections of human oesophagus squama cancer tissues using rabbit anti-TCF7L1 Antigen Affinity purified polyclonal antibody at 1 $\mu\text{g}/\text{mL}$. The immunohistochemical section was developed using SABC method