

Datasheet for ABIN3044555  
**anti-TRIB2 antibody (Middle Region)**[Go to Product page](#)

## 4 Images

## Overview

Quantity:	100 µg
Target:	TRIB2
Binding Specificity:	AA 175-211, Middle Region
Reactivity:	Human, Mouse, Rat
Host:	Rabbit
Clonality:	Polyclonal
Application:	Western Blotting (WB), Immunohistochemistry (Paraffin-embedded Sections) (IHC (p))

## Product Details

Purpose:	Rabbit IgG polyclonal antibody for Tribbles homolog 2(TRIB2) detection. Tested with WB, IHC-P in Human,Mouse,Rat.
Immunogen:	A synthetic peptide corresponding to a sequence in the middle region of human TRIB2 (175-211aa DLKLRKFIFKDEERTRVKLESLEDAYILRGDDDSLSD), identical to the related mouse sequence.
Sequence:	DLKLRKFIFK DEERTRVKLE SLEDAYILRG DDDSLSD
Isotype:	IgG
Cross-Reactivity (Details):	No cross reactivity with other proteins.
Characteristics:	Rabbit IgG polyclonal antibody for Tribbles homolog 2(TRIB2) detection. Tested with WB, IHC-P in Human,Mouse,Rat. Gene Name: tribbles pseudokinase 2 Protein Name: Tribbles homolog 2

## Product Details

Purification: Immunogen affinity purified.

## Target Details

Target: TRIB2

Alternative Name: TRIB2 ([TRIB2 Products](#))

Background: Tribbles homolog 2 is a protein that in humans is encoded by the TRIB2 gene. This gene encodes one of three members of the Tribbles family. The Tribbles members share a Trb domain, which is homologous to protein serine-threonine kinases, but lacks the active site lysine and probably lacks a catalytic function. The Tribbles proteins interact and modulate the activity of signal transduction pathways in a number of physiological and pathological processes. This Tribbles member induces apoptosis of cells mainly of the hematopoietic origin. It has been identified as a protein up-regulated by inflammatory stimuli in myeloid (THP-1) cells, and also as an oncogene that inactivates the transcription factor C/EBP alpha (CCAAT/enhancer-binding protein alpha) and causes acute myelogenous leukemia. Alternatively spliced transcript variants have been found for this gene.

Synonyms: C5FW antibody|FLJ57420 antibody|GS3955 antibody|Hypothetical protein TRB2 antibody|TRB-2 antibody|TRIB2 antibody|TRIB 2 antibody|TRIB2 antibody|TRIB2\_HUMAN antibody|Tribbles homolog 2 antibody

Gene ID: 28951

UniProt: [Q92519](#)

## Application Details

Application Notes: WB: Concentration: 0.1-0.5 µg/mL, Tested Species: Human  
IHC-P: Concentration: 0.5-1 µg/mL, Tested Species: Human, Mouse, Rat, Epitope Retrieval by Heat: Boiling the paraffin sections in 10 mM citrate buffer, pH 6.0, for 20 mins is required for the staining of formalin/paraffin sections.  
Notes: Tested Species: Species with positive results. Other applications have not been tested. Optimal dilutions should be determined by end users.

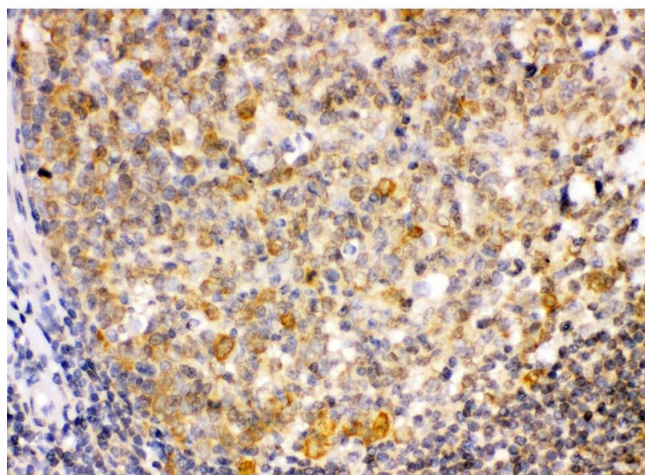
Comment: Antibody can be supported by chemiluminescence kit ABIN921124 in WB, supported by ABIN921231 in IHC(P).

Restrictions: For Research Use only

## Handling

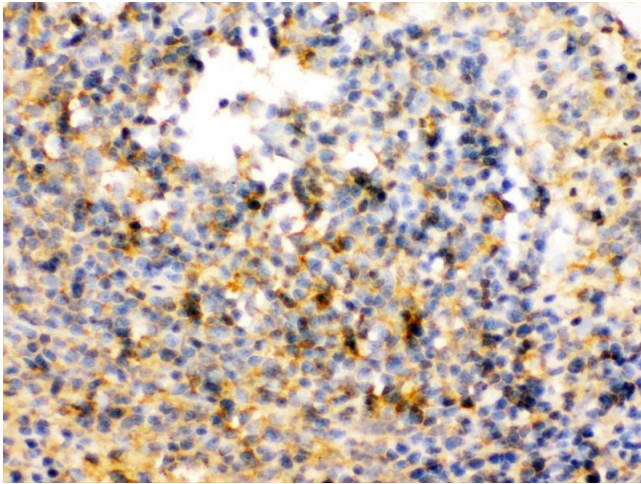
Format:	Lyophilized
Reconstitution:	Add 0.2 mL of distilled water will yield a concentration of 500 µg/mL.
Concentration:	500 µg/mL
Buffer:	Each vial contains 5 mg BSA, 0.9 mg NaCl, 0.2 mg Na <sub>2</sub> HPO <sub>4</sub> , 0.05 mg Sodium azide.
Preservative:	Sodium azide
Precaution of Use:	This product contains Sodium azide: a POISONOUS AND HAZARDOUS SUBSTANCE which should be handled by trained staff only.
Handling Advice:	Avoid repeated freezing and thawing.
Storage:	4 °C/-20 °C
Storage Comment:	At -20°C for one year. After reconstitution, at 4°C for one month. It can also be aliquotted and stored frozen at -20 °C for a longer time. Avoid repeated freezing and thawing.

## Images



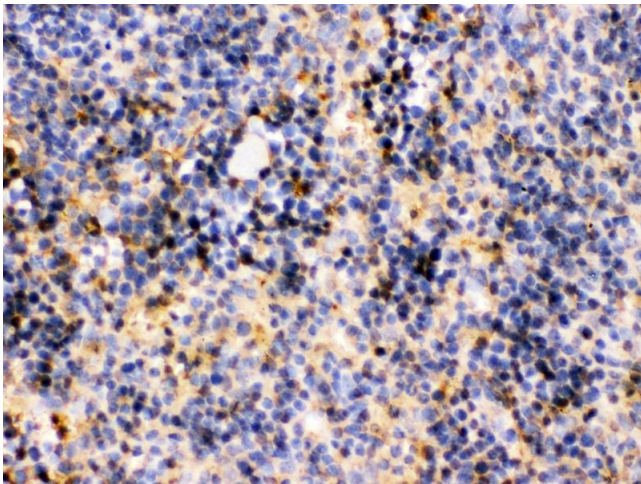
### Immunohistochemistry (Paraffin-embedded Sections)

**Image 1.** TRIB2 was detected in paraffin-embedded sections of human tonsil tissues using rabbit anti-TRIB2 Antigen Affinity purified polyclonal antibody at 1 µg/mL. The immunohistochemical section was developed using SABC method



#### Immunohistochemistry (Paraffin-embedded Sections)

**Image 2.** TRIB2 was detected in paraffin-embedded sections of rat spleen tissues using rabbit anti- TRIB2 Antigen Affinity purified polyclonal antibody at 1 µg/mL. The immunohistochemical section was developed using SABC method



#### Immunohistochemistry (Paraffin-embedded Sections)

**Image 3.** TRIB2 was detected in paraffin-embedded sections of mouse spleen tissues using rabbit anti- TRIB2 Antigen Affinity purified polyclonal antibody at 1 µg/mL. The immunohistochemical section was developed using SABC method

Please check the [product details page](#) for more images. Overall 4 images are available for ABIN3044555.