

Datasheet for ABIN3044574
anti-SKP2 antibody (N-Term)



[Go to Product page](#)

2 Images

7 Publications

Overview

Quantity:	100 µg
Target:	SKP2
Binding Specificity:	AA 2-20, N-Term
Reactivity:	Human, Rat
Host:	Rabbit
Clonality:	Polyclonal
Conjugate:	This SKP2 antibody is un-conjugated
Application:	Western Blotting (WB), Immunohistochemistry (Paraffin-embedded Sections) (IHC (p))

Product Details

Purpose:	Rabbit IgG polyclonal antibody for S-phase kinase-associated protein 2(SKP2) detection. Tested with WB, IHC-P in Human,Mouse,Rat.
Immunogen:	A synthetic peptide corresponding to a sequence at the N-terminus of human SKP2(2-20aa HRKHLQEIPDLSSNVATSF), different from the related rat and mouse sequences by three amino acids.
Sequence:	HRKHLQEIPD LSSNVATSF
Isotype:	IgG
Cross-Reactivity (Details):	<p>Predicted Cross Reactivity: mouse</p> <p>No cross reactivity with other proteins.</p> <p>Predicted Cross Reactivity: Species predicted to be fit for the product based on sequence similarities.</p>

Product Details

Characteristics:	Rabbit IgG polyclonal antibody for S-phase kinase-associated protein 2(SKP2) detection. Tested with WB, IHC-P in Human,Mouse,Rat. Gene Name: S-phase kinase-associated protein 2, E3 ubiquitin protein ligase Protein Name: S-phase kinase-associated protein 2
Purification:	Immunogen affinity purified.

Target Details

Target:	SKP2
Alternative Name:	SKP2 (SKP2 Products)
Background:	<p>The F box protein Skp2(S-phase kinase-associated protein 2) is oncogenic, and its frequent amplification and overexpression correlate with the grade of malignancy of certain tumors. Skp2 controls p300-p53 signaling pathways in cancer cells, making it a potential molecular target for cancer therapy. This gene positively regulates the G(1)-S transition by controlling the stability of several G(1) regulators, such as the cell cycle inhibitor p27. This study provides evidence of a role for an F-box protein in oncogenesis and establishes SKP2 as a protooncogene causally involved in the pathogenesis of lymphomas.</p> <p>Synonyms: CDK2/Cyclin A associated protein p45 antibody Cyclin A/CDK2 associated protein p45 antibody Cyclin-A/CDK2-associated protein p45 antibody F box protein Skp2 antibody F box/LRR repeat protein 1 antibody F-box protein Skp2 antibody F-box/LRR-repeat protein 1 antibody FBL 1 antibody FBL1 antibody FBXL 1 antibody FBXL1 antibody FLB 1 antibody FLB1 antibody MGC1366 antibody p45 antibody p45skp2 antibody S phase kinase associated protein 2 antibody S-phase kinase-associated protein 2 antibody SKP 2 antibody Skp2 antibody SKP2_HUMAN antibody</p>
UniProt:	Q13309
Pathways:	Mitotic G1-G1/S Phases

Application Details

Application Notes:	WB: Concentration: 0.1-0.5 µg/mL, Tested Species: Human, Rat, Predicted Species: Mouse IHC-P: Concentration: 0.5-1 µg/mL, Tested Species: Human, Rat, Predicted Species: Mouse, Epitope Retrieval by Heat: Boiling the paraffin sections in 10 mM citrate buffer, pH 6.0, for 20 mins is required for the staining of formalin/paraffin sections. Notes: Tested Species: Species with positive results. Predicted Species: Species predicted to be
--------------------	---

Application Details

fit for the product based on sequence similarities. Other applications have not been tested.
Optimal dilutions should be determined by end users.

Comment: Antibody can be supported by chemiluminescence kit ABIN921124 in WB, supported by ABIN921231 in IHC(P).

Restrictions: For Research Use only

Handling

Format: Lyophilized

Reconstitution: Add 0.2 mL of distilled water will yield a concentration of 500 µg/mL.

Concentration: 500 µg/mL

Buffer: Each vial contains 5 mg BSA, 0.9 mg NaCl, 0.2 mg Na₂HPO₄, 0.05 mg Thimerosal, 0.05 mg Sodium azide.

Preservative: Thimerosal (Merthiolate), Sodium azide

Precaution of Use: This product contains Sodium azide and Thimerosal (Merthiolate): POISONOUS AND HAZARDOUS SUBSTANCES which should be handled by trained staff only.

Handling Advice: Avoid repeated freezing and thawing.

Storage: 4 °C/-20 °C

Storage Comment: At -20°C for one year. After reconstitution, at 4°C for one month.
It can also be aliquotted and stored frozen at -20 °C for a longer time. Avoid repeated freezing and thawing.

Publications

Product cited in: Chen, Xie, Zhao, Wang, Bai, Yin, Jiang, Xie, Jia, Huang et al.: "Ampelopsin induces apoptosis by regulating multiple c-Myc/S-phase kinase-associated protein 2/F-box and WD repeat-containing protein 7/histone deacetylase 2 pathways in human lung adenocarcinoma ..." in: **Molecular medicine reports**, Vol. 11, Issue 1, pp. 105-12, (2014) ([PubMed](#)).

Xu, Zhu, Han, You, Liu, Ye, Zhang, Wang, Yao: "The oncoprotein hepatitis B X-interacting protein promotes the migration of ovarian cancer cells through the upregulation of S-phase kinase-associated protein 2 by Sp1." in: **International journal of oncology**, Vol. 45, Issue 1, pp. 255-63, (2014) ([PubMed](#)).

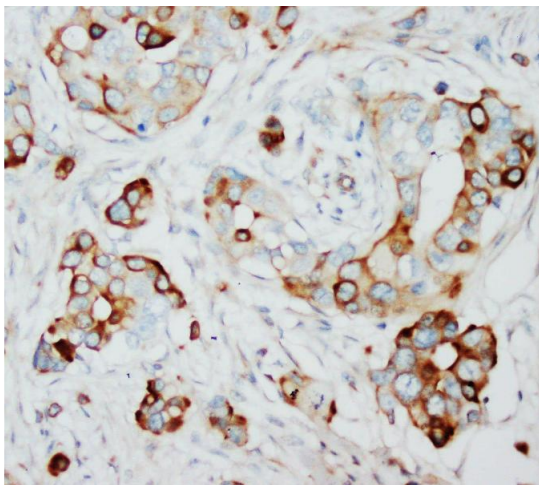
Chen, Bai, Zhong, Xie, Long, Yang, Wu, Jia, Wang: "Wogonin has multiple anti-cancer effects by regulating c-Myc/SKP2/Fbw7? and HDAC1/HDAC2 pathways and inducing apoptosis in human lung adenocarcinoma cell line A549." in: **PLoS ONE**, Vol. 8, Issue 11, pp. e79201, (2013) ([PubMed](#)).

Qiu, Zhang, Lv, Zhang, Zhu, Wang, Yao: "Cdh1 inhibits reactive astrocyte proliferation after oxygen-glucose deprivation and reperfusion." in: **Neurochemistry international**, Vol. 63, Issue 2, pp. 87-92, (2013) ([PubMed](#)).

Xu, You, Liu, Shen, Yao, Ye, Zhang: "The oncoprotein HBXIP up-regulates Skp2 via activating transcription factor E2F1 to promote proliferation of breast cancer cells." in: **Cancer letters**, Vol. 333, Issue 1, pp. 124-32, (2013) ([PubMed](#)).

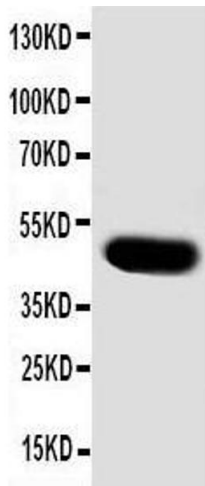
There are more publications referencing this product on: [Product page](#)

Images



Immunohistochemistry

Image 1. Anti-SKP2 antibody, IHC(P) IHC(P): Human Mammary Cancer Tissue



Western Blotting

Image 2. Anti-SKP2 antibody, Western blotting WB: MCF-7 Cell Lysate