

Datasheet for ABIN3046280  
**anti-CLDN8 antibody**



[Go to Product page](#)

1 Image

## Overview

Quantity:	60 µL
Target:	CLDN8
Reactivity:	Rat, Mouse
Host:	Rabbit
Clonality:	Polyclonal
Conjugate:	This CLDN8 antibody is un-conjugated
Application:	Western Blotting (WB)

## Product Details

Isotype:	IgG
Purification:	Affinity purified

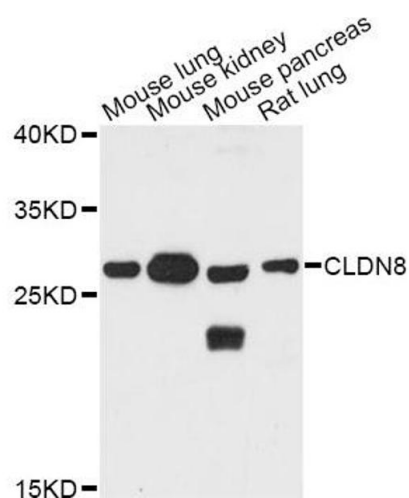
## Target Details

Target:	CLDN8
Alternative Name:	CLDN8 ( <a href="#">CLDN8 Products</a> )
Molecular Weight:	Calculated MW: 24 kDa Observed MW: 28 kDa
Gene ID:	9073
UniProt:	<a href="#">P56748</a>
Pathways:	<a href="#">Hepatitis C</a>

## Application Details

Application Notes:	Optimal working dilution should be determined by the investigator.
Restrictions:	For Research Use only
Handling	
Format:	Liquid
Concentration:	Lot specific
Buffer:	PBS, pH 7.3, 0.02 % sodium azide, 50 % glycerol.
Preservative:	Sodium azide
Precaution of Use:	This product contains Sodium azide: a POISONOUS AND HAZARDOUS SUBSTANCE which should be handled by trained staff only.
Storage:	-20 °C
Storage Comment:	Aliquot and store at -20 °C. Avoid repeated freeze/thaw cycles.

## Images



### Western Blotting

**Image 1.** Western blot analysis of extracts of various cell lines, using CLDN8 antibody (ABIN5974511) at 1:3000 dilution.