

Datasheet for ABIN304885
anti-TCR beta antibody[Go to Product page](#)

1 Image

Overview

Quantity:	0.25 mg
Target:	TCR beta
Reactivity:	Mouse
Host:	Hamster
Clonality:	Monoclonal
Conjugate:	This TCR beta antibody is un-conjugated
Application:	Flow Cytometry (FACS), Immunoprecipitation (IP)

Product Details

Immunogen:	Affinity purified murine T cell receptor. Type of Immunogen: Purified protein
Clone:	H57-597
Isotype:	IgG
Specificity:	Recognizes the beta-chain of the murine alpha/beta T cell receptor and does not show any reactivity to TCRgamma/delta. Clone H57-597 has been reported to activate T-cells in immobilised form and has also been used for in vivo cell depletion and. Removal of sodium azide is recommended prior to using this clone in functional assays.
Purification:	Affinity purified

Target Details

Target:	TCR beta
Alternative Name:	TCR beta (TCR beta Products)
Background:	This antibody detects: TCR Alpha + TCR Beta

Application Details

Application Notes:	Optimal working dilution should be determined by the investigator.
Comment:	Target Species of Antibody: Mouse
Restrictions:	For Research Use only

Handling

Format:	Liquid
Concentration:	Lot specific
Buffer:	PBS, 0.09 % sodium azide.
Preservative:	Sodium azide
Precaution of Use:	This product contains Sodium azide: a POISONOUS AND HAZARDOUS SUBSTANCE which should be handled by trained staff only.
Storage:	4 °C,-20 °C
Storage Comment:	Short term: 4°C. Long term: Store at -20°C. Avoid freeze-thaw cycles.

Images

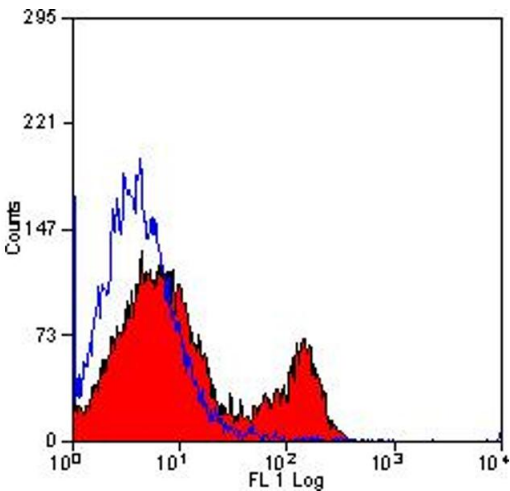


Image 1.