



[Go to Product page](#)

Datasheet for ABIN305193
anti-HLA-ABC antibody

1 Image

Overview

Quantity:	0.2 mg
Target:	HLA-ABC
Reactivity:	Human
Host:	Rat
Clonality:	Monoclonal
Conjugate:	This HLA-ABC antibody is un-conjugated
Application:	Flow Cytometry (FACS), Immunoprecipitation (IP), Immunohistochemistry (Frozen Sections) (IHC (fro)), Immunohistochemistry (IHC)

Product Details

Immunogen:	PHA activated human peripheral blood lymphocytes. Type of Immunogen: Cells
Clone:	YTH862-2
Isotype:	IgG2b
Specificity:	Recognizes a monomorphic determinant on the human HLA Class I heavy chain. Epitope analysis has shown that this binds in the alpha1 domain. MHC Class I is expressed by all nucleated cells. Recent studies have shown that this may be able to induce apoptosis in activated but not resting T cells.
No Cross-Reactivity:	Mouse (Murine)
Purification:	Affinity purified

Target Details

Target:	HLA-ABC
Alternative Name:	HLA-A/B/C (HLA-ABC Products)
Pathways:	TCR Signaling , Regulation of Leukocyte Mediated Immunity , Positive Regulation of Immune Effector Process , Cancer Immune Checkpoints

Application Details

Application Notes:	Approved: Flo (1:50 - 1:100), IHC, IHC-Fr, IP Usage: Flow Cytometry: Use 10 µL of the suggested working dilution to label 10 ⁶ cells in 100 µL. Method sheets are available on request.
Comment:	Target Species of Antibody: Human
Restrictions:	For Research Use only

Handling

Format:	Liquid
Concentration:	Lot specific
Buffer:	PBS, pH 7.4, 0.09 % sodium azide.
Preservative:	Sodium azide
Precaution of Use:	This product contains Sodium azide: a POISONOUS AND HAZARDOUS SUBSTANCE which should be handled by trained staff only.
Storage:	4 °C,-20 °C
Storage Comment:	Short term: 4°C. Long term: Store at -20°C. Avoid freeze-thaw cycles.

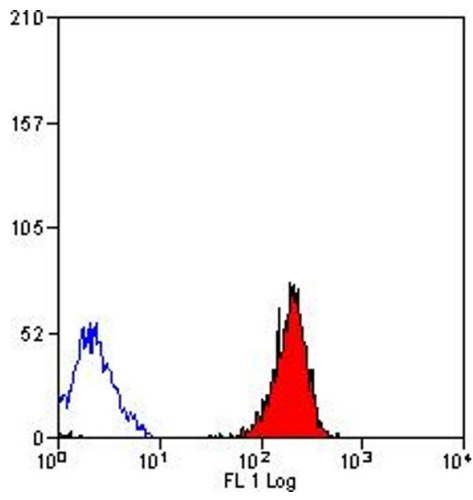


Image 1.