

Datasheet for ABIN305205
anti-HLA-ABC antibody[Go to Product page](#)

1 Image

Overview

Quantity:	0.5 mg
Target:	HLA-ABC
Reactivity:	Human, Cow, Baboon, Cynomolgus, Rhesus Monkey, Macaque, Shrew
Host:	Mouse
Clonality:	Monoclonal
Conjugate:	This HLA-ABC antibody is un-conjugated
Application:	Flow Cytometry (FACS), Immunoprecipitation (IP), Immunohistochemistry (Frozen Sections) (IHC (fro)), Immunohistochemistry (IHC), ELISA

Product Details

Immunogen:	Purified human tonsil lymphocyte membranes. Type of Immunogen: Cells
Clone:	W6-32
Isotype:	IgG2a
Specificity:	Recognizes an antigenic determinant shared among products of the HLA A, B and C loci. Clone Recognizes a conformational epitope, reacting with HLA class I alpha3 and alpha2 domains. MHC class I glycoproteins are found on the surface of almost all nucleated somatic cells. This product is routinely tested in flow cytometry on human peripheral blood lymphocytes.
No Cross-Reactivity:	Mouse (Murine), Guinea Pig, Rabbit, Chicken, Goat, Dog (Canine), Amphibian
Purification:	Affinity purified

Product Details

Endotoxin Level: Low Endotoxin

Target Details

Target: HLA-ABC

Alternative Name: HLA-A/B/C ([HLA-ABC Products](#))

Pathways: [TCR Signaling](#), [Regulation of Leukocyte Mediated Immunity](#), [Positive Regulation of Immune Effector Process](#), [Cancer Immune Checkpoints](#)

Application Details

Application Notes: Approved: ELISA, Flo (1:50 - 1:100), IHC, IHC-Fr, IP

Usage: The applications listed have been tested for the unmodified form of this product. Other forms have not been tested. Flow Cytometry: Use 10 µL of the suggested working dilution to label 10⁶ cells or 100 µL whole blood. Method sheets are available on request.

Comment: Target Species of Antibody: Human

Restrictions: For Research Use only

Handling

Format: Liquid

Concentration: Lot specific

Buffer: PBS, pH 7.4.

Storage: -20 °C

Storage Comment: Short term: -20°C
Long term: -20°C.

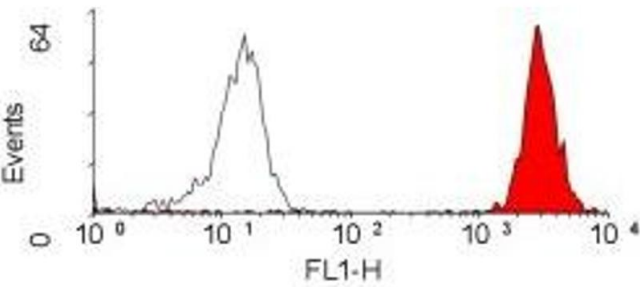


Image 1.