

Datasheet for ABIN305281
anti-HLA-ABC antibody (FITC)[Go to Product page](#)

1 Image

Overview

Quantity:	0.1 mg
Target:	HLA-ABC
Reactivity:	Human, Cow, Baboon, Cynomolgus, Rhesus Monkey, Macaque, Shrew
Host:	Mouse
Clonality:	Monoclonal
Conjugate:	This HLA-ABC antibody is conjugated to FITC
Application:	Flow Cytometry (FACS)

Product Details

Immunogen:	Purified human tonsil lymphocyte membranes. Type of Immunogen: Cells
Clone:	W6-32
Isotype:	IgG2a
Specificity:	Recognizes an antigenic determinant shared among products of the HLA A, B and C loci. Clone Recognizes a conformational epitope, reacting with HLA class I alpha3 and alpha2 domains. MHC class I glycoproteins are found on the surface of almost all nucleated somatic cells. This product is routinely tested in flow cytometry on human peripheral blood lymphocytes.
No Cross-Reactivity:	Mouse (Murine), Guinea Pig, Rabbit, Chicken, Goat, Dog (Canine), Amphibian
Purification:	Affinity purified

Target Details

Target:	HLA-ABC
Alternative Name:	HLA-A/B/C (HLA-ABC Products)
Pathways:	TCR Signaling , Regulation of Leukocyte Mediated Immunity , Positive Regulation of Immune Effector Process , Cancer Immune Checkpoints

Application Details

Application Notes:	Approved: Flo (1:1) Usage: The applications listed have been tested for the unconjugated form of this product. Other forms have not been tested. Flow Cytometry: Use 10 µL of the suggested working dilution to label 10 ⁶ cells in 100 µL. Method sheets are available on request.
Comment:	Target Species of Antibody: Human
Restrictions:	For Research Use only

Handling

Format:	Liquid
Concentration:	Lot specific
Buffer:	PBS, pH 7.4, 0.09 % sodium azide, 1 % BSA.
Preservative:	Sodium azide
Precaution of Use:	This product contains Sodium azide: a POISONOUS AND HAZARDOUS SUBSTANCE which should be handled by trained staff only.
Storage:	4 °C, -20 °C
Storage Comment:	Short term: 4°C. Long term: Store at -20°C. Avoid freeze-thaw cycles.

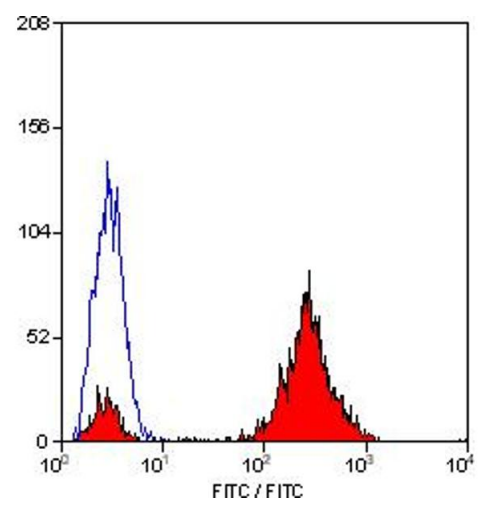


Image 1.