



[Go to Product page](#)

Datasheet for ABIN305714

anti-SYN1 antibody

3 Images

Overview

Quantity:	10 µg
Target:	SYN1
Reactivity:	Human, Mouse, Rat, Cow
Host:	Rabbit
Clonality:	Polyclonal
Conjugate:	This SYN1 antibody is un-conjugated
Application:	Western Blotting (WB), Immunohistochemistry (IHC), Immunocytochemistry (ICC)

Product Details

Immunogen:	Native protein purified from bovine brain. Type of Immunogen: Native protein
Specificity:	Specific for the ~78k synapsin I doublet in Western blots of rat brain extracts. Immunolabeling blocked by preadsorption of antibody with the protein used to generate the antibody
Purification:	Immunoaffinity purified

Target Details

Target:	SYN1
Alternative Name:	SYN1 / Synapsin 1 (SYN1 Products)
Background:	Name/Gene ID: SYN1 Family: Synapsin

Target Details

Synonyms: SYN1, Brain protein 4.1, Synapsin, Synapsin I, Synapsin-1, SYN1a, SYN1b, SYN1

Gene ID: 6853

Application Details

Application Notes: Approved: ICC, IHC (1:2000), WB (1:1000)

Comment: Target Species of Antibody: Bovine

Restrictions: For Research Use only

Handling

Format: Lyophilized

Reconstitution: Phosphate Buffered Saline (PBS)

Concentration: Lot specific

Buffer: Lyophilized.

Storage: -20 °C

Storage Comment: Short term: -20°C

Long term: -20°C.

Images

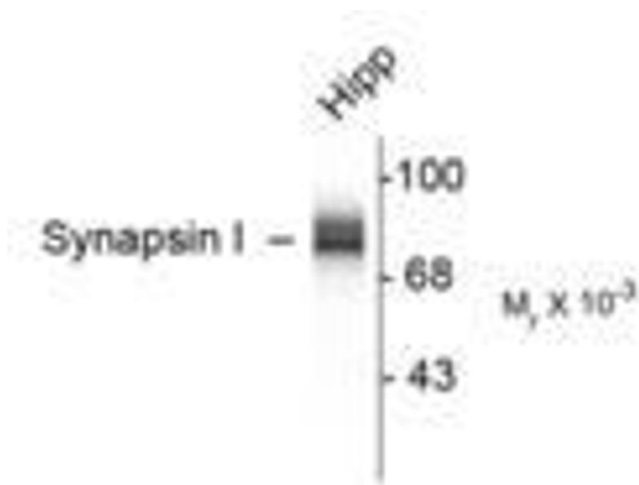


Image 1.

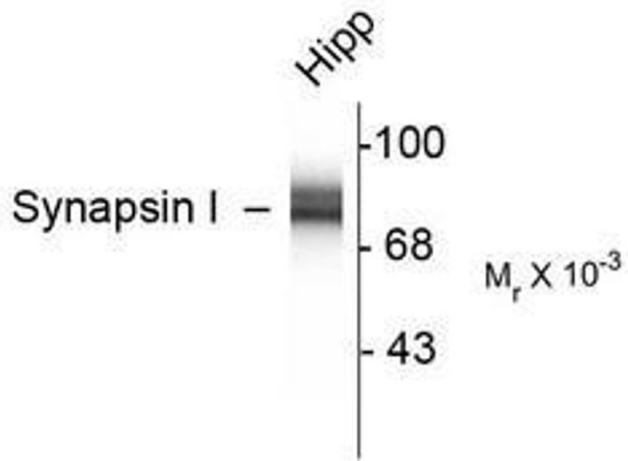


Image 2.

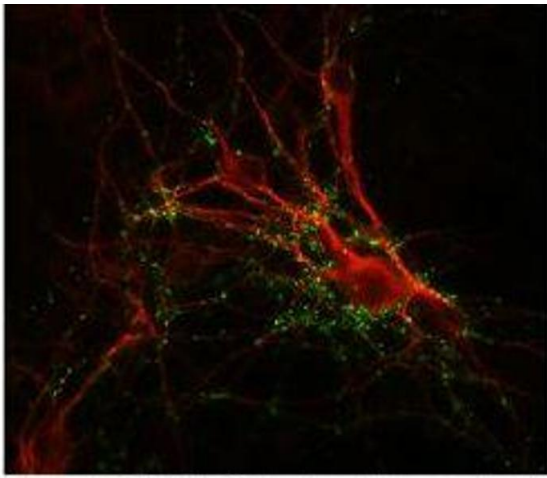


Image 3.