



Datasheet for ABIN305719  
**anti-IL20RA antibody (AA 159-175)**



[Go to Product page](#)

2 Images

Overview

Quantity:	50 µg
Target:	IL20RA
Binding Specificity:	AA 159-175
Reactivity:	Human, Mouse
Host:	Rabbit
Clonality:	Polyclonal
Conjugate:	This IL20RA antibody is un-conjugated
Application:	Western Blotting (WB), Immunohistochemistry (IHC), Immunohistochemistry (Paraffin-embedded Sections) (IHC (p)), Flow Cytometry (FACS)

Product Details

Brand:	IHC-plus™
Immunogen:	Synthetic peptide from human IL20RA.  Type of Immunogen: Synthetic peptide
Isotype:	IgG
Specificity:	The amino acid sequence used as immunogen is 100 % homologous in human and chimp, and 82 % homologous in mouse and rat. Both the expect ~70 kD band and an unknown ~90 kD band are seen in A375 cell lysate and are blocked by the immunizing peptide. The ~90 kD band alone is seen in A431 cell lysate, and it is also blocked by the immunizing peptide. This was made against a portion of the extracellular domain of IL-20RA. Permeabilization of the cells

## Product Details

---

during testing may affect binding.

Purification: Protein G purified

## Target Details

---

Target: IL20RA

Alternative Name: IL20RA ([IL20RA Products](#))

Background: Name/Gene ID: IL20RA  
Family: Interleukin

Synonyms: IL20RA, CRF2-8, IL-20 receptor subunit alpha, IL-20R1, IL-20R-alpha, Interleukin 20 receptor, alpha, Interleukin-20 receptor I, IL-20RA, ZCYTOR7

Gene ID: 53832

UniProt: [Q9UHF4](#)

## Application Details

---

Application Notes: Approved: Flo, IHC, IHC-P (10 µg/mL), WB (1 - 3 µg/mL)

Usage: Immunohistochemistry: This antibody was validated for use in immunohistochemistry on a panel of 21 formalin-fixed, paraffin-embedded (FFPE) human tissues after heat induced antigen retrieval in pH 6.0 citrate buffer. After incubation with the primary antibody, slides were incubated with biotinylated secondary antibody, followed by alkaline phosphatase-streptavidin and chromogen. The stained slides were evaluated by a pathologist to confirm staining specificity. The optimal working concentration for this antibody was determined to be 10 µg/mL.

Comment: Target Species of Antibody: Human

Restrictions: For Research Use only

## Handling

---

Format: Liquid

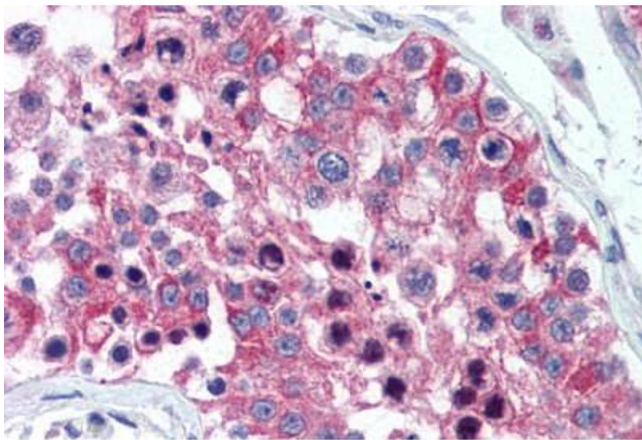
Concentration: Lot specific

Buffer: PBS, 0.2 % gelatin, 0.05 % sodium azide.

## Handling

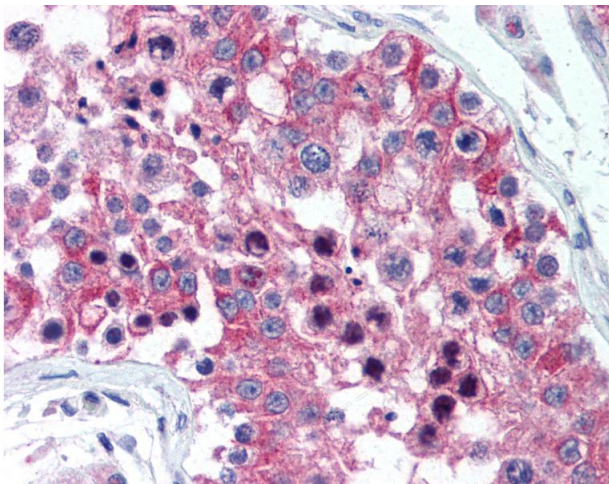
Preservative:	Sodium azide
Precaution of Use:	This product contains Sodium azide: a POISONOUS AND HAZARDOUS SUBSTANCE which should be handled by trained staff only.
Handling Advice:	Avoid repeat freeze-thaw cycles.
Storage:	4 °C,-20 °C
Storage Comment:	Short term: 4°C. Long term: Store at -20°C. Avoid freeze-thaw cycles.

## Images



### Immunohistochemistry (Paraffin-embedded Sections)

**Image 1.** Human Testis (formalin-fixed, paraffin-embedded) stained with IL20RA antibody ABIN305719 at 10 ug/ml followed by biotinylated goat anti-rabbit IgG secondary antibody ABIN481713, alkaline phosphatase-streptavidin and chromogen.



### Immunohistochemistry

**Image 2.** Anti-IL20RA antibody IHC of human testis. Immunohistochemistry of formalin-fixed, paraffin-embedded tissue after heat-induced antigen retrieval. Antibody concentration 10 ug/ml.