

Datasheet for ABIN305722

anti-Elastin antibody

3 Images

[Go to Product page](#)

Overview

Quantity:	50 µg
Target:	Elastin (ELN)
Reactivity:	Human
Host:	Rabbit
Clonality:	Polyclonal
Conjugate:	This Elastin antibody is un-conjugated
Application:	Immunohistochemistry (IHC), ELISA, Immunohistochemistry (Paraffin-embedded Sections) (IHC (p)), Immunofluorescence (IF), Radioimmunoassay (RIA)

Product Details

Brand:	IHC-plus™
Immunogen:	Elastin extracted and purified from human skin Type of Immunogen: Purified protein
Specificity:	Recognizes human Elastin. Crossreactivity: < 0.1 % with human Collagen I, II, III, IV, V, human Fibronectin, or rat Elastin by radioimmunoassay.
Purification:	Protein A purified

Target Details

Target:	Elastin (ELN)
Alternative Name:	ELN / Elastin (ELN Products)

Target Details

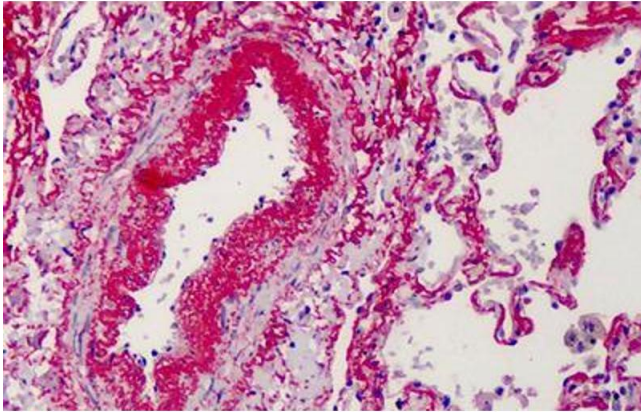
Background:	Name/Gene ID: ELN Synonyms: ELN, SVAS, WBS, Elastin, Tropoelastin, WS
Gene ID:	2006
UniProt:	P15502
Pathways:	Regulation of Actin Filament Polymerization

Application Details

Application Notes:	Approved: ELISA, IF (1:80), IHC, IHC-P (2.5 µg/mL), RIA Usage: Immunohistochemistry: This antibody was validated for use in immunohistochemistry on a panel of 21 formalin-fixed, paraffin-embedded (FFPE) human tissues after heat induced antigen retrieval in pH 6.0 citrate buffer. After incubation with the primary antibody, slides were incubated with biotinylated secondary antibody, followed by alkaline phosphatase-streptavidin and chromogen. The stained slides were evaluated by a pathologist to confirm staining specificity. The optimal working concentration for this antibody was determined to be 2.5 µg/mL. Immunofluorescence: 1:80. Frozen human skin and liver tissues. Positive control: Human skin or liver.
Comment:	Target Species of Antibody: Human
Restrictions:	For Research Use only

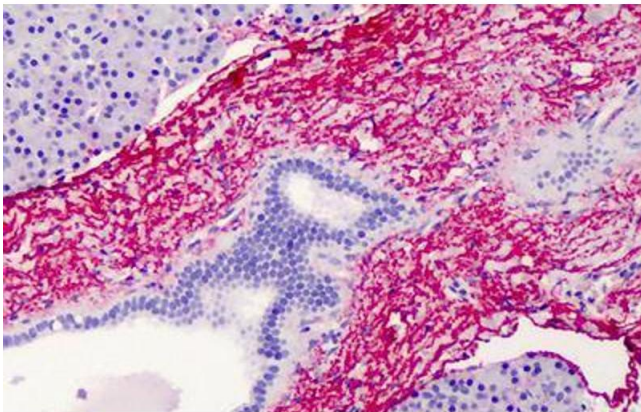
Handling

Format:	Liquid
Concentration:	Lot specific
Buffer:	PBS buffer, pH 7.2 with no preservatives added
Preservative:	Without preservative
Handling Advice:	avoid freeze thaw cycles.
Storage:	4 °C, -20 °C
Storage Comment:	Short term 4°C, long term aliquot and store at -20°C, avoid freeze-thaw cycles.



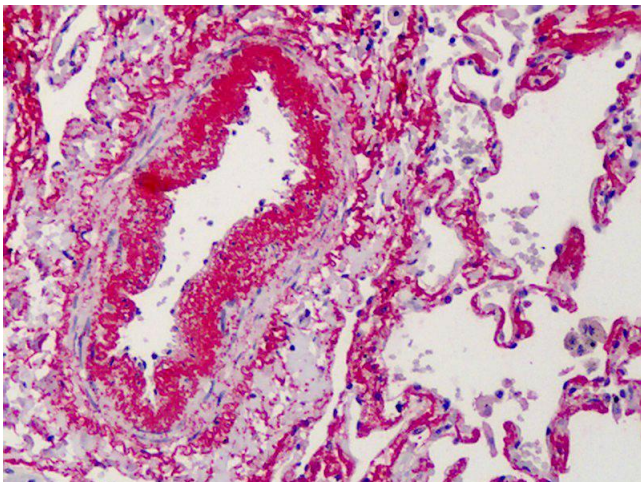
Immunohistochemistry (Formalin-fixed Paraffin-embedded Sections)

Image 1. Human Lung: Formalin-Fixed, Paraffin-Embedded (FFPE)



Immunohistochemistry (Formalin-fixed Paraffin-embedded Sections)

Image 2. Human Pancreas: Formalin-Fixed, Paraffin-Embedded (FFPE)



Immunohistochemistry

Image 3. Anti-Elastin antibody IHC of human lung. Immunohistochemistry of formalin-fixed, paraffin-embedded tissue after heat-induced antigen retrieval. Antibody concentration 2.5 ug/ml.