



[Go to Product page](#)

Datasheet for ABIN305736  
**anti-TJP1 antibody (AA 463-1109)**

2 Images

Overview

Quantity:	50 µg
Target:	TJP1
Binding Specificity:	AA 463-1109
Reactivity:	Human, Mouse, Rat, Dog, Guinea Pig
Host:	Rabbit
Clonality:	Polyclonal
Conjugate:	This TJP1 antibody is un-conjugated
Application:	Western Blotting (WB), Immunohistochemistry (IHC), ELISA, Immunoprecipitation (IP), Immunohistochemistry (Paraffin-embedded Sections) (IHC (p)), Immunohistochemistry (Frozen Sections) (IHC (fro))

Product Details

Brand:	IHC-plus™
Immunogen:	A 69kD fusion protein corresponding to aa463-1109 of human ZO-1 cDNA. This sequence lies N-terminal to the 80 amino acid region (the alpha-motif) present in the α+ isoform but absent in the α- isoform due to alternative splicing.  Type of Immunogen: Fusion protein
Isotype:	IgG
Specificity:	Recognizes human ZO-1α+ and ZO- α- isoforms. Reactivity with dlG has not been characterized. No reactivity with PSD-95 or p55 has been observed on Western blots, but

## Product Details

---

potential reactivity with these proteins has not been fully characterized. Predicted species cross-reactivity: mouse, rat, guinea pig, canine and chicken (moderate reactivity). Please note that cross-reactivity with predicted species is only predicted and is not guaranteed.

Purification: Immunoaffinity purified

## Target Details

---

Target: TJP1

Alternative Name: TJP1 / ZO-1 ([TJP1 Products](#))

Background: Name/Gene ID: TJP1  
Family: Occludin

Synonyms: TJP1, ZO-1, Zona occludens protein 1, Zona occludens 1, Zonula occludens protein 1, Tight junction protein 1, ZO1, Tight junction protein ZO-1, Zonula occludens 1 protein

Gene ID: 7082

UniProt: [Q07157](#)

Pathways: [Carbohydrate Homeostasis](#), [Cell-Cell Junction Organization](#)

## Application Details

---

Application Notes: Approved: ELISA, IHC, IHC-Fr, IHC-P (5 µg/mL), IP, WB (0.5 - 2 µg/mL)

Usage: Immunohistochemistry: This antibody was validated for use in immunohistochemistry on a panel of 21 formalin-fixed, paraffin-embedded (FFPE) human tissues after heat induced antigen retrieval in pH 6.0 citrate buffer. After incubation with the primary antibody, slides were incubated with biotinylated secondary antibody, followed by alkaline phosphatase-streptavidin and chromogen. The stained slides were evaluated by a pathologist to confirm staining specificity. The optimal working concentration for this antibody was determined to be 5 µg/mL. Western Blot: 0.5-2 µg/mL. Immunoprecipitation: 2-5 µg/reaction.

Comment: Target Species of Antibody: Human

Restrictions: For Research Use only

## Handling

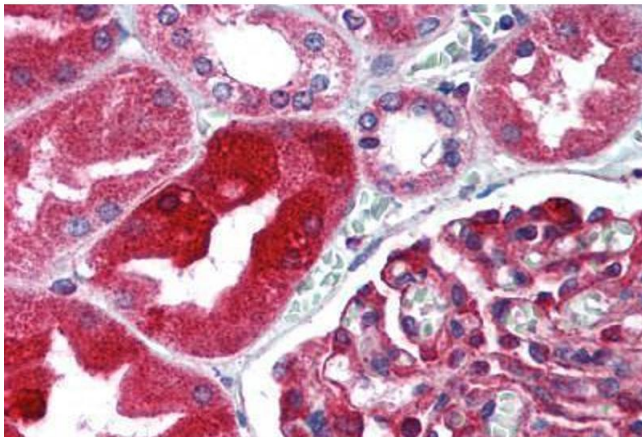
---

Format: Liquid

## Handling

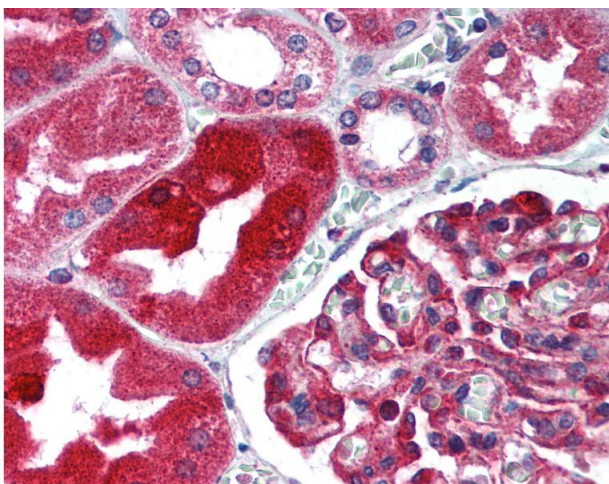
Concentration:	Lot specific
Buffer:	PBS, pH 7.4, 0.09 % sodium azide.
Preservative:	Sodium azide
Precaution of Use:	This product contains Sodium azide: a POISONOUS AND HAZARDOUS SUBSTANCE which should be handled by trained staff only.
Handling Advice:	Avoid repeat freeze-thaw cycles.
Storage:	4 °C,-20 °C
Storage Comment:	Short term: 4°C. Long term: Store at -20°C. Avoid freeze-thaw cycles.

## Images



### Immunohistochemistry (Paraffin-embedded Sections)

**Image 1.** Human Kidney (formalin-fixed, paraffin-embedded) stained with TJP1 antibody ABIN305736 at 5 ug/ml followed by biotinylated goat anti-rabbit IgG secondary antibody ABIN481713, alkaline phosphatase-streptavidin and chromogen.



### Immunohistochemistry

**Image 2.** Anti-ZO-1 antibody IHC of human kidney. Immunohistochemistry of formalin-fixed, paraffin-embedded tissue after heat-induced antigen retrieval. Antibody concentration 5 ug/ml.