

Datasheet for ABIN305737

anti-SAA1 antibody**2** Images[Go to Product page](#)

Overview

Quantity:	50 µg
Target:	SAA1
Reactivity:	Human
Host:	Mouse
Clonality:	Monoclonal
Conjugate:	This SAA1 antibody is un-conjugated
Application:	ELISA, Western Blotting (WB), Immunohistochemistry (IHC), Immunohistochemistry (Paraffin-embedded Sections) (IHC (p))

Product Details

Brand:	IHC-plus™
Immunogen:	Highly purified recombinant human SAA, 12kD.
Isotype:	IgG1 kappa
Specificity:	Recognizes natural and recombinant human SAA. Does not show any cross-reactivity with other human cytokines or growth factors tested such as IL-1b, IL-8, MCAF, TGF-b and EGF.
Purification:	Protein G purified

Target Details

Target:	SAA1
Alternative Name:	SAA1 / SAA / Serum Amyloid A (SAA1 Products)

Target Details

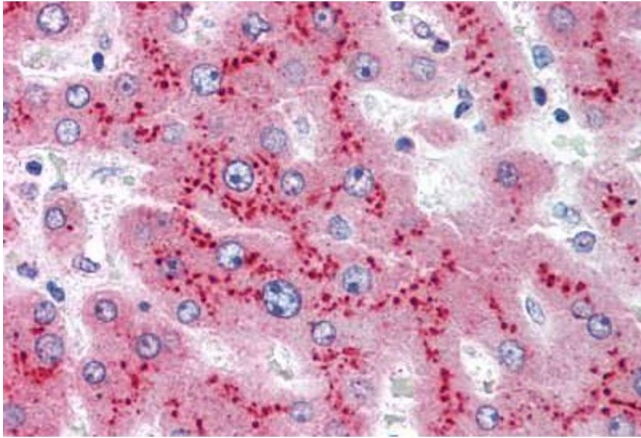
Background:	Name/Gene ID: SAA1 Synonyms: SAA1, Serum amyloid A protein, Serum Amyloid A, Serum amyloid A-1 protein, TP53I4, SAA, Serum amyloid A1, PIG4
Gene ID:	6288
UniProt:	P02735
Pathways:	Toll-Like Receptors Cascades

Application Details

Application Notes:	Approved: ELISA (0.3 µg/mL), IHC, IHC-P (5 µg/mL), SwELISA, WB Usage: Immunohistochemistry: This antibody was validated for use in immunohistochemistry on a panel of 21 formalin-fixed, paraffin-embedded (FFPE) human tissues after heat induced antigen retrieval in pH 6.0 citrate buffer. After incubation with the primary antibody, slides were incubated with biotinylated secondary antibody, followed by alkaline phosphatase-streptavidin and chromogen. The stained slides were evaluated by a pathologist to confirm staining specificity. The optimal working concentration for this antibody was determined to be 5 µg/mL. ELISA (capture coating): 0.3 µg/mL Detects 1.1 ng/mL of SAA in serum/plasma or 0.6 ng/mL of SAA in medium with an assay range of 0 to 80 ng/mL. Suggested substrate: TMB. Western Blot: 0.1-0.5 µg allows visualization of 100 ng/lane of recombinant human SAA. Used in sandwich ELISA as the capture antibody with LS-B2208 as the detection antibody.
Comment:	Target Species of Antibody: Human
Restrictions:	For Research Use only

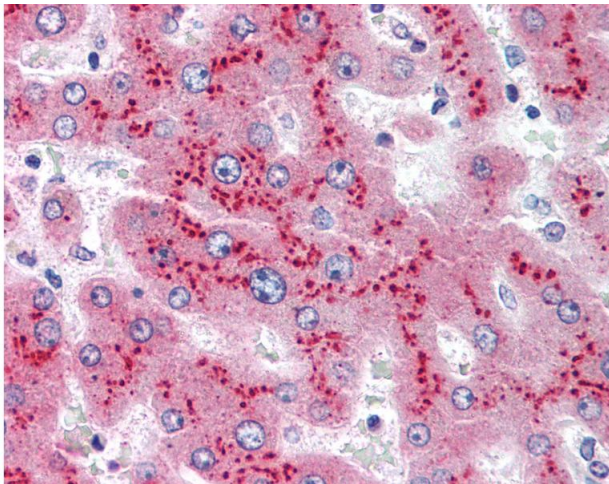
Handling

Format:	Liquid
Concentration:	Lot specific
Buffer:	PBS, pH 7.2
Handling Advice:	Avoid repeat freeze-thaw cycles.
Storage:	4 °C, -20 °C
Storage Comment:	Short term: 4°C. Long term: Store at -20°C. Avoid freeze-thaw cycles.



Immunohistochemistry (Paraffin-embedded Sections)

Image 1. Human Liver (formalin-fixed, paraffin-embedded) stained with SAA1 antibody ABIN305737 at 5 ug/ml followed by biotinylated anti-mouse IgG secondary antibody ABIN481714, alkaline phosphatase-streptavidin and chromogen.



Immunohistochemistry

Image 2. Anti-SAA1 / Serum Amyloid A antibody IHC of human liver. Immunohistochemistry of formalin-fixed, paraffin-embedded tissue after heat-induced antigen retrieval. Antibody concentration 5 ug/ml.