

Datasheet for ABIN305749  
**anti-ARL6 antibody (N-Term)**[Go to Product page](#)

## 2 Images

## Overview

Quantity:	50 µg
Target:	ARL6
Binding Specificity:	N-Term
Reactivity:	Human
Host:	Rabbit
Clonality:	Polyclonal
Conjugate:	This ARL6 antibody is un-conjugated
Application:	Immunohistochemistry (IHC), Western Blotting (WB), ELISA, Immunohistochemistry (Paraffin-embedded Sections) (IHC (p))

## Product Details

Brand:	IHC-plus™
Immunogen:	Synthetic peptide from human ARL6.  Type of Immunogen: Synthetic peptide
Specificity:	Synthetic peptide corresponding to N-terminal residues of human ARL6 (ADP-ribosylation factor- like protein 6).
Purification:	Immunoaffinity purified

## Target Details

Target:	ARL6
---------	------

## Target Details

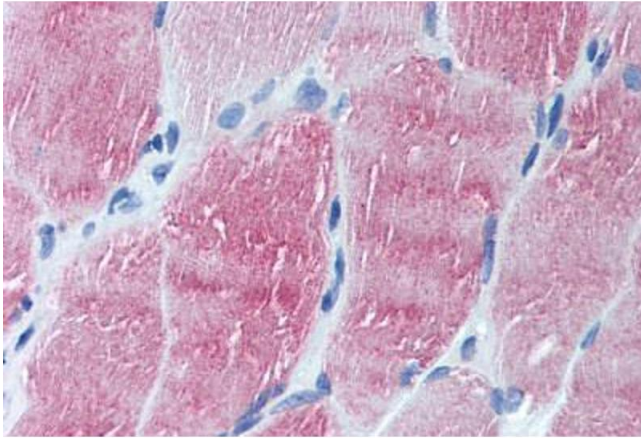
Alternative Name:	ARL6 ( <a href="#">ARL6 Products</a> )
Background:	Name/Gene ID: ARL6 Family: Ras GTPase superfamily IPR001806  Synonyms: ARL6, ADP-ribosylation factor-like 6, BBS3, RP55
Gene ID:	84100
UniProt:	<a href="#">Q9H0F7</a>

## Application Details

Application Notes:	Approved: ELISA (1 µg/mL), IHC, IHC-P (10 µg/mL), WB (1 µg/mL)  Usage: Immunohistochemistry: This antibody was validated for use in immunohistochemistry on a panel of 21 formalin-fixed, paraffin-embedded (FFPE) human tissues after heat induced antigen retrieval in pH 6.0 citrate buffer. After incubation with the primary antibody, slides were incubated with biotinylated secondary antibody, followed by alkaline phosphatase-streptavidin and chromogen. The stained slides were evaluated by a pathologist to confirm staining specificity. The optimal working concentration for this antibody was determined to be 10 µg/mL.
Comment:	Target Species of Antibody: Human
Restrictions:	For Research Use only

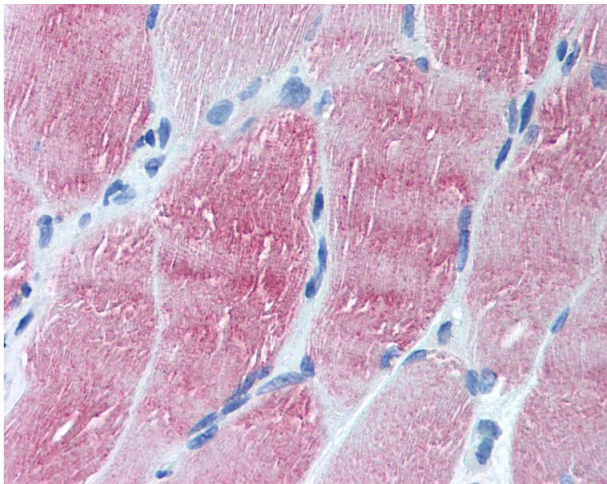
## Handling

Format:	Liquid
Concentration:	Lot specific
Buffer:	PBS, 0.01 % sodium azide, 50 % glycerol.
Preservative:	Sodium azide
Precaution of Use:	This product contains Sodium azide: a POISONOUS AND HAZARDOUS SUBSTANCE which should be handled by trained staff only.
Handling Advice:	Avoid repeated freezing and thawing.
Storage:	4 °C, -20 °C
Storage Comment:	4°C or -20°C, Avoid freeze-thaw cycles.



#### Immunohistochemistry (Paraffin-embedded Sections)

**Image 1.** Human Skeletal Muscle (formalin-fixed, paraffin-embedded) stained with ARL6 antibody ABIN305749 at 10 ug/ml followed by biotinylated goat anti-rabbit IgG secondary antibody ABIN481713, alkaline phosphatase-streptavidin and chromogen.



#### Immunohistochemistry

**Image 2.** Anti-ARL6 antibody IHC of human skeletal muscle. Immunohistochemistry of formalin-fixed, paraffin-embedded tissue after heat-induced antigen retrieval. Antibody concentration 10 ug/ml.