



Datasheet for ABIN305775  
**anti-ABCB11 antibody (AA 705-718)**



[Go to Product page](#)

2 Images

Overview

Quantity:	50 µg
Target:	ABCB11
Binding Specificity:	AA 705-718
Reactivity:	Human
Host:	Mouse
Clonality:	Monoclonal
Conjugate:	This ABCB11 antibody is un-conjugated
Application:	Western Blotting (WB), Immunohistochemistry (IHC), Immunocytochemistry (ICC), Immunohistochemistry (Paraffin-embedded Sections) (IHC (p))

Product Details

Brand:	IHC-plus™
Immunogen:	Synthetic peptide corresponding to aa 705-718 (Y705LVHEPPLAVVDHK718) of human BSEP (bile salt export pump). Percent identity by BLAST analysis: Human, Gorilla, Gibbon, Monkey, Panda (100%), Marmoset, Dog (93%).  Type of Immunogen: Synthetic peptide
Isotype:	IgG1
Specificity:	Recognizes human BSEP. Does not cross-react with human P-glycoprotein.
Predicted Reactivity:	Percent identity by BLAST analysis: Human, Gorilla, Gibbon, Monkey, Panda (100%) Marmoset, Dog (93%).

## Product Details

---

Purification: Protein G purified

## Target Details

---

Target: ABCB11

Alternative Name: ABCB11 / BSEP ([ABCB11 Products](#))

Background: Name/Gene ID: ABCB11  
Subfamily: ATP-binding cassette - ABCB/MDR  
Family: Transporter  
  
Synonyms: ABCB11, ABC16, Bile salt export pump, BSEP, PGY4, Sister p-glycoprotein, BRIC2, PFIC-2, PFIC2, SPGP

Gene ID: 8647

UniProt: [O95342](#)

## Application Details

---

Application Notes: Approved: ICC, IHC, IHC-P (5 µg/mL), WB

Usage: Immunohistochemistry: This antibody was validated for use in immunohistochemistry on a panel of 21 formalin-fixed, paraffin-embedded (FFPE) human tissues after heat induced antigen retrieval in pH 6.0 citrate buffer. After incubation with the primary antibody, slides were incubated with biotinylated secondary antibody, followed by alkaline phosphatase-streptavidin and chromogen. The stained slides were evaluated by a pathologist to confirm staining specificity. The optimal working concentration for this antibody was determined to be 5 µg/mL. Western Blot: 1:50-1:200 Immunocytochemistry: Cytospin preparations Optimal dilutions to be determined by the researcher.

Comment: Target Species of Antibody: Human

Restrictions: For Research Use only

## Handling

---

Format: Liquid

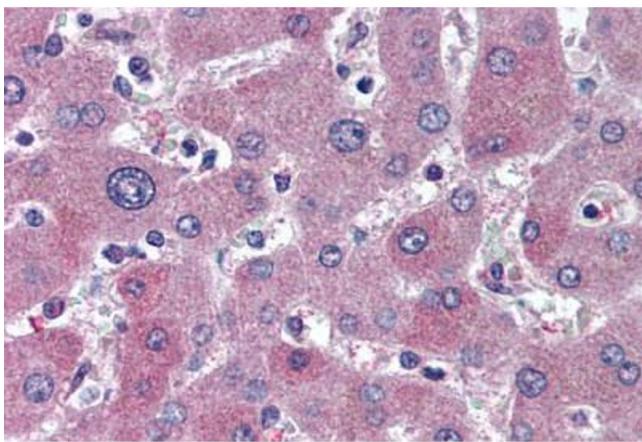
Concentration: Lot specific

Buffer: PBS pH 7.2, 0.7 % BSA, 100nM sodium azide

## Handling

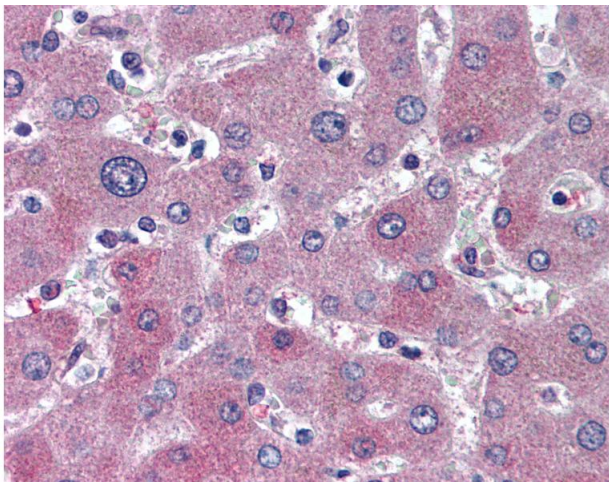
Preservative:	Sodium azide
Precaution of Use:	This product contains Sodium azide: a POISONOUS AND HAZARDOUS SUBSTANCE which should be handled by trained staff only.
Handling Advice:	Avoid repeat freeze-thaw cycles.
Storage:	4 °C, -20 °C
Storage Comment:	Short term: 4°C. Long term: Store at -20°C. Avoid freeze-thaw cycles.

## Images



### Immunohistochemistry (Paraffin-embedded Sections)

**Image 1.** Human Liver (formalin-fixed, paraffin-embedded) stained with ABCB11 antibody ABIN305775 at 5 ug/ml followed by biotinylated anti-mouse IgG secondary antibody ABIN481714, alkaline phosphatase-streptavidin and chromogen.



### Immunohistochemistry

**Image 2.** Anti-ABCB11 / BSEP antibody IHC of human liver. Immunohistochemistry of formalin-fixed, paraffin-embedded tissue after heat-induced antigen retrieval. Antibody concentration 5 ug/ml.