

Datasheet for ABIN305786
anti-Claudin 12 antibody (N-Term)

2 Images

[Go to Product page](#)

Overview

| | |
|----------------------|---|
| Quantity: | 50 µg |
| Target: | Claudin 12 (CLDN12) |
| Binding Specificity: | N-Term |
| Reactivity: | Human, Mouse |
| Host: | Rabbit |
| Clonality: | Polyclonal |
| Conjugate: | This Claudin 12 antibody is un-conjugated |
| Application: | Western Blotting (WB), Immunohistochemistry (IHC), Immunohistochemistry (Paraffin-embedded Sections) (IHC (p)), Immunofluorescence (IF) |

Product Details

| | |
|---------------|--|
| Brand: | IHC-plus™ |
| Immunogen: | Synthetic peptide derived from the N-terminal region of mouse and human Claudin 12. Type of Immunogen: Synthetic peptide |
| Isotype: | IgG |
| Specificity: | Recognizes mouse Claudin 12 protein at ~27kD in Western blots. Cross-reactivity has been confirmed on mouse lung, colon and kidney homogenates. Recognizes human protein in IHC-P. |
| Purification: | Immunoaffinity purified |

Target Details

| | |
|-------------------|---|
| Target: | Claudin 12 (CLDN12) |
| Alternative Name: | CLDN12 / Claudin 12 (CLDN12 Products) |
| Background: | Name/Gene ID: CLDN12 Family: Claudin Synonyms: CLDN12, Claudin 12, Claudin-12 |
| Gene ID: | 9069 |
| UniProt: | P56749 |
| Pathways: | Cell-Cell Junction Organization |

Application Details

| | |
|--------------------|---|
| Application Notes: | Approved: IF (5 µg/mL), IHC, IHC-P (5 µg/mL), WB (1 - 3 µg/mL) Usage: Immunohistochemistry: This antibody was validated for use in immunohistochemistry on a panel of 21 formalin-fixed, paraffin-embedded (FFPE) human tissues after heat induced antigen retrieval in pH 6.0 citrate buffer. After incubation with the primary antibody, slides were incubated with biotinylated secondary antibody, followed by alkaline phosphatase-streptavidin and chromogen. The stained slides were evaluated by a pathologist to confirm staining specificity. The optimal working concentration for this antibody was determined to be 5 µg/mL. Immunofluorescence: 5 µg/mL, performed using ethanol-fixed mouse colon. Positive control: Mouse lung, colon, and kidney homogenates. |
| Comment: | Target Species of Antibody: Human |
| Restrictions: | For Research Use only |

Handling

| | |
|--------------------|--|
| Format: | Liquid |
| Concentration: | Lot specific |
| Buffer: | PBS, pH 7.4, 0.1 % sodium azide. |
| Preservative: | Sodium azide |
| Precaution of Use: | This product contains Sodium azide: a POISONOUS AND HAZARDOUS SUBSTANCE which should be handled by trained staff only. |

Handling

Handling Advice: Aliquot to Avoid freeze/thaw cycles.

Storage: 4 °C, -20 °C

Storage Comment: Short term: 4°C. Long term: Store at -20°C. Avoid freeze-thaw cycles.

Images

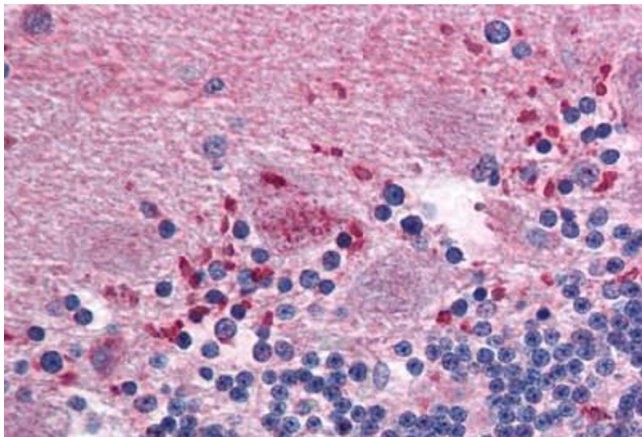
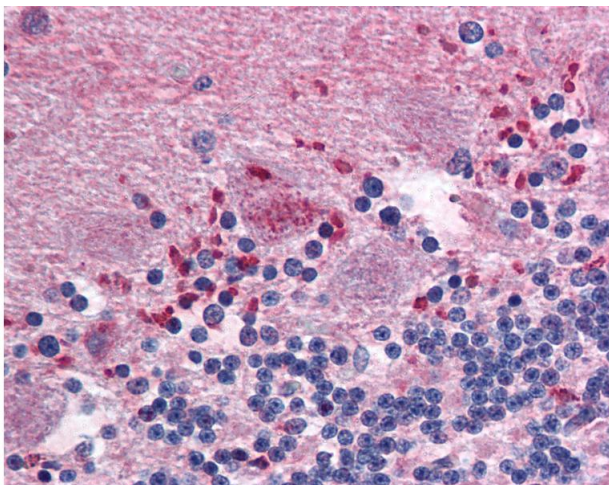


Image 1. Brain, cerebellum



Immunohistochemistry

Image 2. Anti-CLDN12 / Claudin 12 antibody IHC of human brain, cerebellum. Immunohistochemistry of formalin-fixed, paraffin-embedded tissue after heat-induced antigen retrieval. Antibody concentration 5 ug/ml.