

Datasheet for ABIN305888

**anti-Occludin antibody (C-Term)****2** Images[Go to Product page](#)

## Overview

Quantity:	50 µg
Target:	Occludin (OCLN)
Binding Specificity:	C-Term
Reactivity:	Human, Mouse, Rat, Dog
Host:	Rabbit
Clonality:	Polyclonal
Conjugate:	This Occludin antibody is un-conjugated
Application:	Western Blotting (WB), ELISA, Immunohistochemistry (IHC), Immunoprecipitation (IP), Immunofluorescence (IF), Immunohistochemistry (Paraffin-embedded Sections) (IHC (p))

## Product Details

Brand:	IHC-plus™
Immunogen:	A GST fusion protein consisting of the C-terminal 150 amino acids of human occludin fused to GST.  Type of Immunogen: Fusion protein
Isotype:	IgG
Specificity:	Recognizes human occludin at ~65kD. Reactivity of this antibody with the occludin protein has been confirmed by Western Blot using total cell lysates derived from MDCK cells, human T84 cells, human Caco-2 and rat fibroblasts transfected with a plasmid encoding human occludin. Species cross-reactivity has been confirmed in Western blot only.

## Product Details

Purification: Immunoaffinity purified

## Target Details

Target: Occludin (OCLN)

Alternative Name: OCLN / Occludin ([OCLN Products](#))

Background: Name/Gene ID: OCLN

Synonyms: OCLN, Occludin, BLCPMG

Gene ID: 100506658

UniProt: [Q16625](#)

Pathways: [Cell-Cell Junction Organization](#), [Hepatitis C](#)

## Application Details

Application Notes: Approved: ELISA (0.1 - 1 µg/mL), IF, IHC, IHC-P (2.5 µg/mL), IP, WB (1 - 3 µg/mL)

Usage: Immunohistochemistry: This antibody was validated for use in immunohistochemistry on a panel of 21 formalin-fixed, paraffin-embedded (FFPE) human tissues after heat induced antigen retrieval in pH 6.0 citrate buffer. After incubation with the primary antibody, slides were incubated with biotinylated secondary antibody, followed by alkaline phosphatase-streptavidin and chromogen. The stained slides were evaluated by a pathologist to confirm staining specificity. The optimal working concentration for this antibody was determined to be 2.5 µg/mL.

Comment: Target Species of Antibody: Human

Restrictions: For Research Use only

## Handling

Format: Liquid

Concentration: Lot specific

Buffer: PBS, pH 7.4, 0.09 % sodium azide.

Preservative: Sodium azide

Precaution of Use: This product contains Sodium azide: a POISONOUS AND HAZARDOUS SUBSTANCE which

## Handling

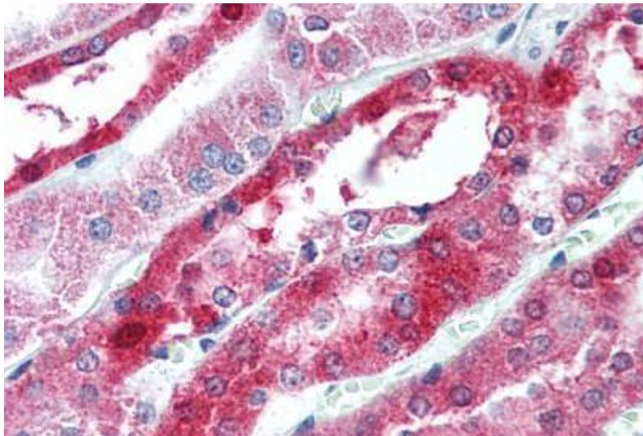
should be handled by trained staff only.

Handling Advice: Avoid repeat freeze-thaw cycles.

Storage: 4 °C, -20 °C

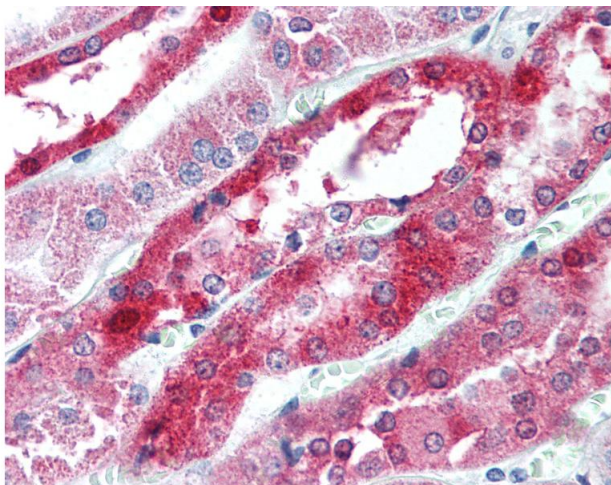
Storage Comment: Short term: 4°C. Long term: Store at -20°C. Avoid freeze-thaw cycles.

## Images



### Immunohistochemistry (Paraffin-embedded Sections)

**Image 1.** Human Kidney (formalin-fixed, paraffin-embedded) stained with OCLN antibody ABIN305888 at 2.5 ug/ml followed by biotinylated goat anti-rabbit IgG secondary antibody ABIN481713, alkaline phosphatase-streptavidin and chromogen.



### Immunohistochemistry

**Image 2.** Anti-Occludin antibody IHC of human kidney. Immunohistochemistry of formalin-fixed, paraffin-embedded tissue after heat-induced antigen retrieval. Antibody concentration 5 ug/ml.