

Datasheet for ABIN3059248

anti-SSR4 antibody[Go to Product page](#)**1** Image

Overview

Quantity:	200 µL
Target:	SSR4
Reactivity:	Human, Mouse
Host:	Rabbit
Clonality:	Polyclonal
Conjugate:	This SSR4 antibody is un-conjugated
Application:	Western Blotting (WB)

Product Details

Isotype:	IgG
Purification:	Affinity purified

Target Details

Target:	SSR4
Alternative Name:	SSR4 (SSR4 Products)
Molecular Weight:	Calculated MW: 18 kDa Observed MW: 19 kDa
Gene ID:	6748
UniProt:	P51571

Application Details

Application Notes: Optimal working dilution should be determined by the investigator.

Restrictions: For Research Use only

Handling

Format: Liquid

Concentration: Lot specific

Buffer: PBS, pH 7.3, 0.02 % sodium azide, 50 % glycerol.

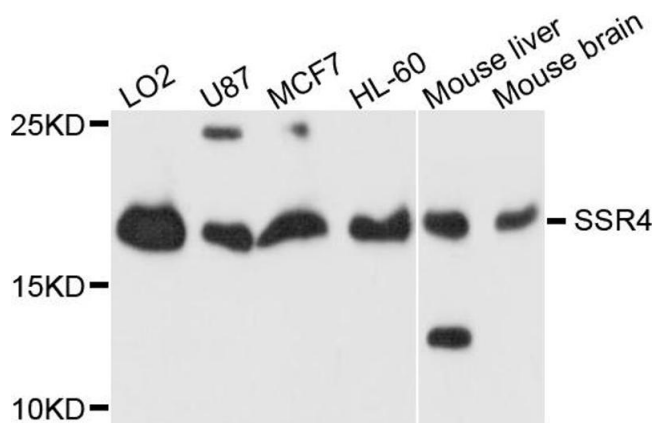
Preservative: Sodium azide

Precaution of Use: This product contains Sodium azide: a POISONOUS AND HAZARDOUS SUBSTANCE which should be handled by trained staff only.

Storage: -20 °C

Storage Comment: Aliquot and store at -20 °C. Avoid repeated freeze/thaw cycles.

Images



Western Blotting

Image 1. Western blot analysis of extracts of various cell lines, using SSR4 antibody (ABIN5995477) at 1/1000 dilution.