

Datasheet for ABIN3060292
anti-PKC antibody (pThr410)[Go to Product page](#)

1 Image

Overview

Quantity:	100 µL
Target:	PKC (PKC pan)
Binding Specificity:	pThr410
Reactivity:	Human
Host:	Rabbit
Clonality:	Polyclonal
Conjugate:	This PKC antibody is un-conjugated
Application:	Western Blotting (WB)

Product Details

Immunogen:	The immunogen used to raise this antibody has a length of 592 amino acids.
Isotype:	IgG
Purification:	Affinity purified

Target Details

Target:	PKC (PKC pan)
Alternative Name:	PKC (PKC pan Products)
Molecular Weight:	Calculated MW: 46 kDa/56-68 kDa/74-83 kDa Observed MW: 75 kDa
Gene ID:	5590

Target Details

UniProt:	Q05513
Pathways:	Positive Regulation of Response to DNA Damage Stimulus

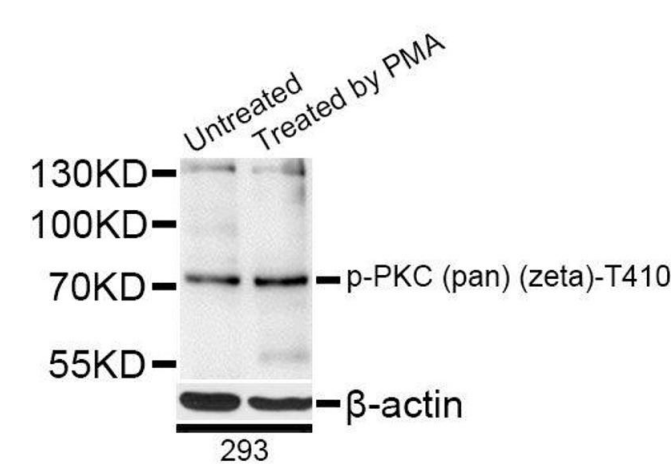
Application Details

Application Notes:	Optimal working dilution should be determined by the investigator.
Restrictions:	For Research Use only

Handling

Format:	Liquid
Concentration:	Lot specific
Buffer:	PBS, pH 7.3, 0.02 % sodium azide, 50 % glycerol.
Preservative:	Sodium azide
Precaution of Use:	This product contains Sodium azide: a POISONOUS AND HAZARDOUS SUBSTANCE which should be handled by trained staff only.
Storage:	-20 °C
Storage Comment:	Aliquot and store at -20 °C. Avoid repeated freeze/thaw cycles.

Images



Western Blotting

Image 1. Western blot analysis of extracts of 293 cells, using Phospho-PKC (pan) (zeta)-T410 antibody (ABIN5996150) at 1/1000 dilution. 293 cells were treated by PMA/TPA (200nM) for 30 minutes after serum-starvation overnight.