



[Go to Product page](#)

Datasheet for ABIN306418

## anti-Maltose Binding Protein antibody

### 1 Image

#### Overview

Quantity:	100 µL
Target:	Maltose Binding Protein (MBP)
Reactivity:	Human
Host:	Mouse
Clonality:	Monoclonal
Conjugate:	This Maltose Binding Protein antibody is un-conjugated
Application:	Western Blotting (WB), ELISA

#### Product Details

Immunogen:	Recombinant MBP,
Clone:	10C12
Isotype:	Kappa
Purification:	The antibody was purified from mouse ascitic fluids by protein-G affinity chromatography

#### Target Details

Target:	Maltose Binding Protein (MBP)
Alternative Name:	Maltose Binding Protein ( <a href="#">MBP Products</a> )
Background:	Epitope tagging offers an easy and universal strategy for the identification and purification of proteins derived by recombinant DNA technology. The insertion of a Maltose Binding Protein (MBP) tag creates a stable fusion product that does not interfere with the bioactivity of the protein or with the biodistribution of the MBP tagged product.

## Application Details

Application Notes: Recommended dilution 1:2000

Restrictions: For Research Use only

## Handling

Format: Liquid

Concentration: 1mg/ml

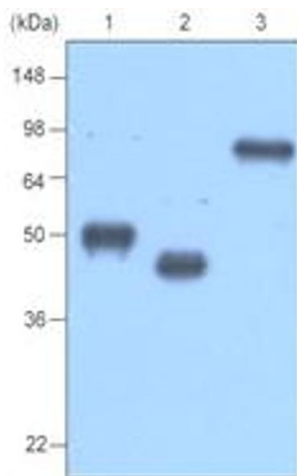
Buffer: In Phosphate-Buffered Saline (pH7.4) with 0.1% Sodium Azide

Preservative: Sodium azide

Precaution of Use: This product contains sodium azide: a POISONOUS AND HAZARDOUS SUBSTANCE which should be handled by trained staff only.

Storage: -20 °C

## Images



### Western Blotting

Image 1.