



[Go to Product page](#)

## Datasheet for ABIN306419 anti-Clusterin antibody

### 3 Images

#### Overview

Quantity:	100 µL
Target:	Clusterin (CLU)
Reactivity:	Human
Host:	Mouse
Clonality:	Monoclonal
Conjugate:	This Clusterin antibody is un-conjugated
Application:	Western Blotting (WB), Immunohistochemistry (IHC), ELISA

#### Product Details

Immunogen:	Recombinant Clusterin, Accession / GI number: NM_203339
Clone:	1A11
Isotype:	Kappa
Purification:	The antibody was purified from mouse ascitic fluids by protein-G affinity chromatography

#### Target Details

Target:	Clusterin (CLU)
Alternative Name:	Clusterin ( <a href="#">CLU Products</a> )
Background:	Clusterin has been implicated in numerous processes including active cell death, immune regulation, cell adhesion and morphological transformation. Clusterin (previously named SP-40) is a glycoprotein, 80kDa comprising two distinct 40kDa polypeptide chains. It shows marked similarity, both physicochemically and in immunohistological distribution, to the single chain,

## Target Details

80kDa, Sproteín, an additional component of the SC5b-9 complex. Clusterin is a secreted glycoprotein of which the exact function remains a matter for speculation.

Pathways: [Apoptosis](#), [Negative Regulation of intrinsic apoptotic Signaling](#)

## Application Details

Application Notes: Recommended dilution 1:1000(W.B), Recommended dilution 1:100(IHC)

Restrictions: For Research Use only

## Handling

Format: Liquid

Concentration: 1mg/ml

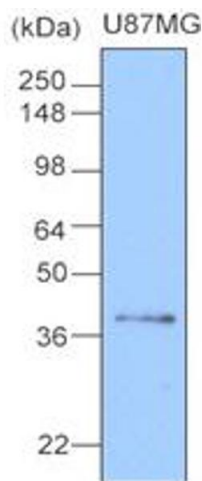
Buffer: In Phosphate-Buffered Saline (pH7.4) with 0.1% Sodium Azide

Preservative: Sodium azide

Precaution of Use: This product contains sodium azide: a POISONOUS AND HAZARDOUS SUBSTANCE which should be handled by trained staff only.

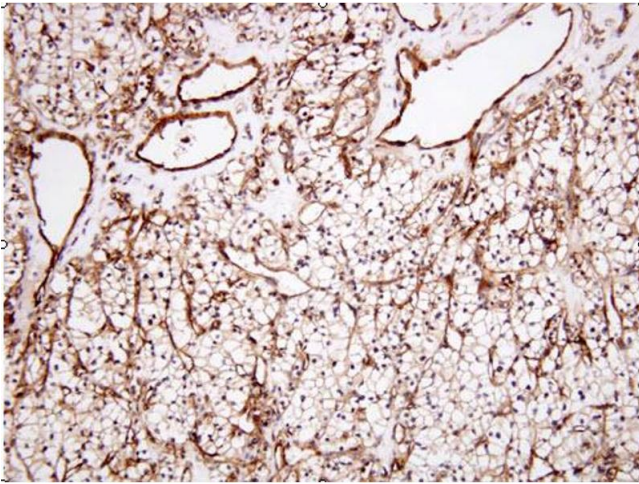
Storage: -20 °C

## Images



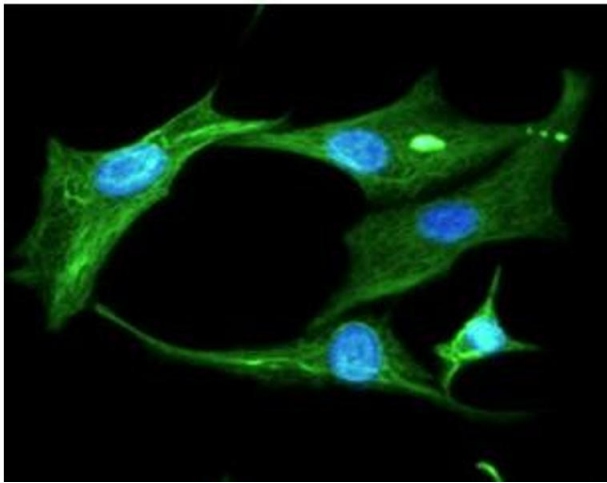
### Western Blotting

Image 1.



### Immunohistochemistry

**Image 2.** Paraffin embedded sections of human renal cell carcinoma tissue were incubated with anti-human Clusterin (1:100) for 2 hours at room temperature. Antigen retrieval was performed in 0.1M sodium citrate buffer and detected using Diaminobenzidine (DAB)



### Immunofluorescence

**Image 3.** ICC/IF analysis of Clusterin in U87MG cells line, stained with DAPI (Blue) for nucleus staining and monoclonal anti-human Clusterin antibody (1:100) with goat anti-mouse IgG-Alexa fluor 488 conjugate (Green).