



Datasheet for ABIN306426
anti-SNAP25 antibody



[Go to Product page](#)

2 Images

Overview

Quantity:	100 µL
Target:	SNAP25
Reactivity:	Human, Mouse
Host:	Mouse
Clonality:	Monoclonal
Conjugate:	This SNAP25 antibody is un-conjugated
Application:	Western Blotting (WB), ELISA

Product Details

Immunogen:	Recombinant SANP25, Accession / GI number: NP_570824
Clone:	4-00E-11
Isotype:	Kappa
Purification:	The antibody was purified from mouse ascitic fluids by protein-G affinity chromatography

Target Details

Target:	SNAP25
Alternative Name:	SNAP25 (SNAP25 Products)
Background:	The synaptosomal-associated protein (SNAP25) is an essential component of the core complex that mediates presynaptic vesicle trafficking. Thus, SNAP25 is directly involved in the release of neurotransmitters.

Target Details

Pathways: [Positive Regulation of Peptide Hormone Secretion](#), [Hormone Transport](#), [Synaptic Vesicle Exocytosis](#), [Dicarboxylic Acid Transport](#)

Application Details

Application Notes: Recommended dilution 1:2000

Restrictions: For Research Use only

Handling

Format: Liquid

Concentration: 1mg/ml

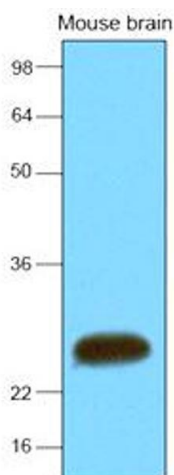
Buffer: In Phosphate-Buffered Saline (pH7.4) with 0.1% Sodium Azide

Preservative: Sodium azide

Precaution of Use: This product contains sodium azide: a POISONOUS AND HAZARDOUS SUBSTANCE which should be handled by trained staff only.

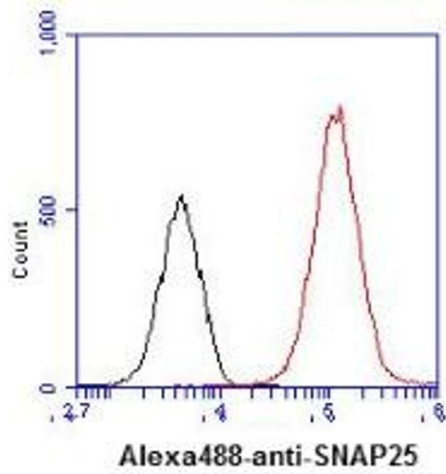
Storage: -20 °C

Images



Western Blotting

Image 1.



Immunofluorescence

Image 2. ICC/IF analysis of SNAP25 in U87MG cells line, stained with DAPI (Blue) for nucleus staining and monoclonal anti-human SNAP25 antibody (1:100) with goat anti-mouse IgG-Alexa fluor 488 conjugate (Green).