



[Go to Product page](#)

Datasheet for ABIN306431
anti-WHSC1L1 antibody

1 Image

Overview

Quantity:	100 µL
Target:	WHSC1L1
Reactivity:	Human
Host:	Mouse
Clonality:	Monoclonal
Conjugate:	This WHSC1L1 antibody is un-conjugated
Application:	Western Blotting (WB), ELISA

Product Details

Immunogen:	Recombinant NSD3, Accession / GI number: NP_075447
Clone:	2-00E-09
Isotype:	Kappa
Purification:	The antibody was purified from mouse ascitic fluids by protein-G affinity chromatography

Target Details

Target:	WHSC1L1
Alternative Name:	NSD3 (WHSC1L1 Products)
Background:	This gene encoding NSD3 is related to the Wolf-Hirschhorn syndrome candidate - 1 gene and encodes a protein with PWWP (proline-tryptophan-tryptophan-proline) domains. NSD3 is Histone methyltransferase which preferentially methylates 'Lys-4' and 'Lys-27' of histone H3 and is amplified in several tumor cell lines and primary breast carcinomas.

Application Details

Application Notes: Recommended dilution 1:2000

Restrictions: For Research Use only

Handling

Format: Liquid

Concentration: 1mg/ml

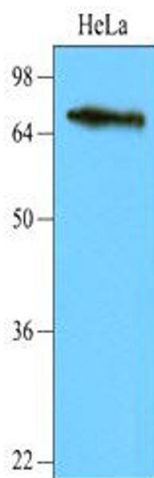
Buffer: In Phosphate-Buffered Saline (pH7.4) with 0.1% Sodium Azide

Preservative: Sodium azide

Precaution of Use: This product contains sodium azide: a POISONOUS AND HAZARDOUS SUBSTANCE which should be handled by trained staff only.

Storage: -20 °C

Images



Western Blotting

Image 1. Western blot analysis: Cell lysates of HeLa (40ug) were resolved by SDS-PAGE, transferred to NC membrane and probed with anti-human NSD3 (1:2,000). Proteins were visualized using a goat anti-mouse secondary antibody conjugated to HRP and an ECL detection system.