



Datasheet for ABIN306433  
**anti-PPP1CA antibody**



[Go to Product page](#)

2 Images

Overview

|              |                                       |
|--------------|---------------------------------------|
| Quantity:    | 100 µL                                |
| Target:      | PPP1CA                                |
| Reactivity:  | Human                                 |
| Host:        | Mouse                                 |
| Clonality:   | Monoclonal                            |
| Conjugate:   | This PPP1CA antibody is un-conjugated |
| Application: | Western Blotting (WB), ELISA          |

Product Details

|               |  |
|---------------|--|
| Immunogen:    | Recombinant PPP1CA, Accession / GI number: NP_002699                                     |
| Clone:        | 4G3  |
| Isotype:      | Kappa  |
| Purification: | The antibody was purified from mouse ascitic fluids by protein-G affinity chromatography |

Target Details

|                   |  |
|-------------------|--|
| Target:           | PPP1CA   |
| Alternative Name: | PPP1CA ( <a href="#">PPP1CA Products</a> )   |
| Background:       | Protein phosphatase 1, catalytic subunit, alpha isoform, also known as PPP1CA, is one of the three catalytic subunits of protein phosphatase 1. The protein is highly conserved in eukaryotic cells and play a role in dephosphorylating substrates such as the postsynaptic density-associated Ca <sup>2+</sup> /calmodulin dependent protein kinase II. It is participate in the regulation of a |

## Target Details

variety of cellular processes, such as cell division, glycogen metabolism, muscle contractility, protein synthesis and apoptosis

Pathways:

[M Phase](#), [Cellular Glucan Metabolic Process](#), [Regulation of Carbohydrate Metabolic Process](#), [Lipid Metabolism](#)

## Application Details

Application Notes:

Recommended dilution 1:1000

Restrictions:

For Research Use only

## Handling

Format:

Liquid

Concentration:

1mg/ml

Buffer:

In Phosphate-Buffered Saline (pH7.4) with 0.1% Sodium Azide

Preservative:

Sodium azide

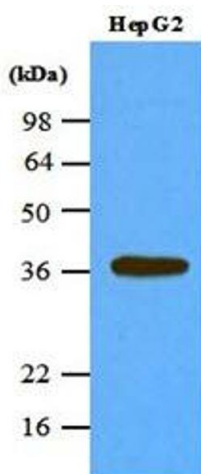
Precaution of Use:

This product contains sodium azide: a POISONOUS AND HAZARDOUS SUBSTANCE which should be handled by trained staff only.

Storage:

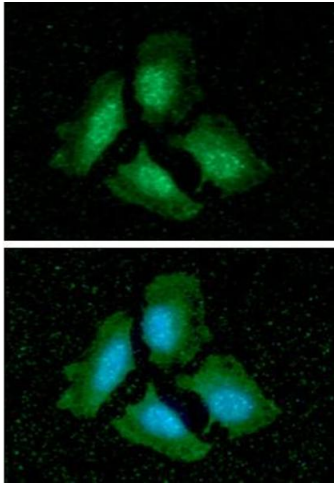
-20 °C

## Images



### Western Blotting

**Image 1.** Western blot analysis: Cell lysates of HepG2 (45ug) were resolved by SDS-PAGE, transferred to NC membrane and probed with anti-human PPP1CA (1:1000). Proteins were visualized using a goat anti-mouse secondary antibody conjugated to HRP and an ECL detection system.



### Immunofluorescence

**Image 2.** ICC/IF analysis of PPP1CA in HeLa cells line, stained with DAPI (Blue) for nucleus staining and monoclonal anti-human PPP1CA antibody (1:100) with goat anti-mouse IgG-Alexa fluor 488 conjugate (Green).