



[Go to Product page](#)

Datasheet for ABIN306434

## anti-CIB1 antibody

### 2 Images

#### Overview

Quantity:	100 µL
Target:	CIB1
Reactivity:	Human
Host:	Mouse
Clonality:	Monoclonal
Conjugate:	This CIB1 antibody is un-conjugated
Application:	Western Blotting (WB), ELISA

#### Product Details

Immunogen:	Recombinant CIB1, Accession / GI number: NP_006375
Clone:	1D1
Isotype:	Kappa
Purification:	The antibody was purified from mouse ascitic fluids by protein-G affinity chromatography

#### Target Details

Target:	CIB1
Alternative Name:	CIB1 ( <a href="#">CIB1 Products</a> )
Background:	CIB1 (Calcium and integrin binding 1) is regulatory protein with 50% homology to calmodulin and calcineurin B, that encodes a member of the calcium-binding protein family. The specific function of this protein has not yet been determined, however this protein is known to interact with DNA-dependent protein kinase and may play a role in kinase-phosphatase regulation of

## Target Details

DNA end joining. Also CIB1 is widely expressed and binds to a number of effectors, such as integrin  $\alpha$ IIb, PAK1, and polo-like kinases in different tissues.

## Application Details

Application Notes: Recommended dilution 1:1000

Restrictions: For Research Use only

## Handling

Format: Liquid

Concentration: 1mg/ml

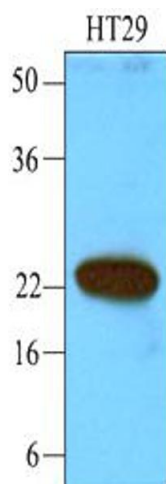
Buffer: In Phosphate-Buffered Saline (pH7.4) with 0.1% Sodium Azide

Preservative: Sodium azide

Precaution of Use: This product contains sodium azide: a POISONOUS AND HAZARDOUS SUBSTANCE which should be handled by trained staff only.

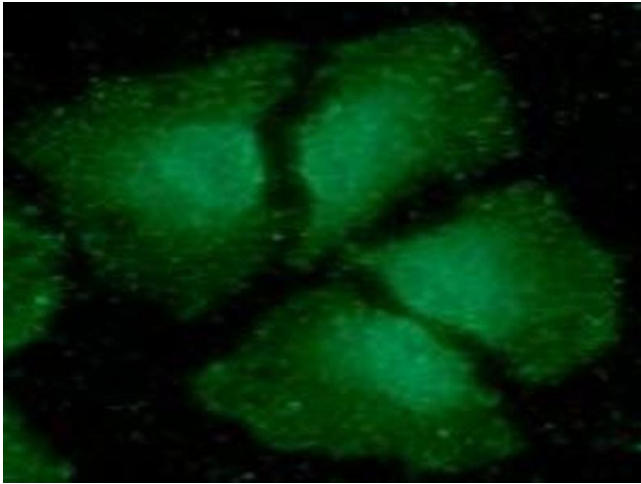
Storage: -20 °C

## Images



### Western Blotting

Image 1.



### Immunofluorescence

**Image 2.** ICC/IF analysis of CIB1 in HeLa cells line, stained with DAPI (Blue) for nucleus staining and monoclonal anti-human CIB1 antibody (1:100) with goat anti-mouse IgG-Alexa fluor 488 conjugate (Green).