



[Go to Product page](#)

Datasheet for ABIN306440

## anti-BAFF antibody

### 2 Images

#### Overview

Quantity:	100 µL
Target:	BAFF (TNFSF13B)
Reactivity:	Human, Rat
Host:	Mouse
Clonality:	Monoclonal
Conjugate:	This BAFF antibody is un-conjugated
Application:	Western Blotting (WB), ELISA

#### Product Details

Immunogen:	Recombinant human BLyS (134-285aa) , Accession / GI number: NP_006564
Clone:	H4C7
Isotype:	IgG3 kappa
Purification:	The antibody was purified from mouse ascitic fluids by protein-G affinity chromatography

#### Target Details

Target:	BAFF (TNFSF13B)
Alternative Name:	BLyS ( <a href="#">TNFSF13B Products</a> )
Background:	B lymphocyte stimulator (BLyS), a member of the tumor necrosis factor (TNF) superfamily of cytokines, induces B-cell proliferation and immunoglobulin secretion and is a key regulator of peripheral B-cell populations in vivo.. BLyS is made by immune-cells called monocytes and macrophages. When monocytes and macrophages are activated, BLyS is released and binds to

## Target Details

a receptor found only on B cells.

Pathways: [NF-kappaB Signaling, Production of Molecular Mediator of Immune Response](#)

## Application Details

Application Notes: Recommended dilution 1:500

Restrictions: For Research Use only

## Handling

Format: Liquid

Concentration: 1mg/ml

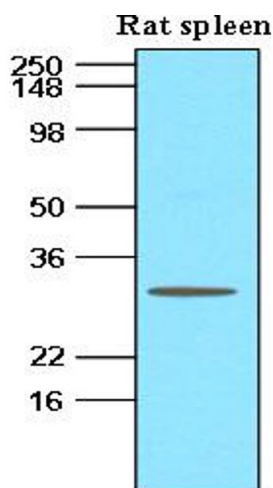
Buffer: In Phosphate-Buffered Saline (pH7.4) with 0.1% Sodium Azide

Preservative: Sodium azide

Precaution of Use: This product contains sodium azide: a POISONOUS AND HAZARDOUS SUBSTANCE which should be handled by trained staff only.

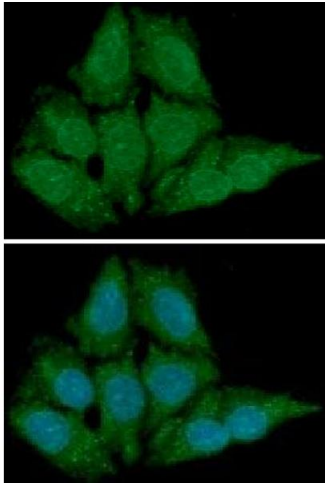
Storage: -20 °C

## Images



### Western Blotting

Image 1.



### Immunofluorescence

**Image 2.** ICC/IF analysis of BLYS in HeLa cells line, stained with DAPI (Blue) for nucleus staining and monoclonal anti-human BLYS antibody (1:100) with goat anti-mouse IgG-Alexa fluor 488 conjugate (Green)