



[Go to Product page](#)

Datasheet for ABIN306458
anti-Calmodulin 1 antibody

2 Images

Overview

Quantity:	100 µL
Target:	Calmodulin 1 (Calm1)
Reactivity:	Human, Mouse
Host:	Mouse
Clonality:	Monoclonal
Conjugate:	This Calmodulin 1 antibody is un-conjugated
Application:	Western Blotting (WB), ELISA

Product Details

Immunogen:	Recombinant human Calmodulin (1-149aa), Accession / GI number: NP_001734
Clone:	J4D8
Isotype:	IgG2a kappa
Purification:	The antibody was purified from mouse ascitic fluids by protein-G affinity chromatography

Target Details

Target:	Calmodulin 1 (Calm1)
Alternative Name:	Calmodulin (Calm1 Products)
Background:	Calmodulin has been known to act as an intracellular calcium sensor protein. When the intracellular Ca ²⁺ concentration increases, calmodulin can bind up to four Ca ²⁺ , changing its conformation and regulating cellular functions such as activation or inhibition of a large number of enzymes, ion channels, and receptors. Concentration: 1 mg/ml

Target Details

Pathways: [cAMP Metabolic Process](#), [Myometrial Relaxation and Contraction](#), [G-protein mediated Events](#), [Interaction of EGFR with phospholipase C-gamma](#), [Phototransduction](#), [BCR Signaling](#)

Application Details

Application Notes: Recommended dilution 1:500

Restrictions: For Research Use only

Handling

Format: Liquid

Concentration: 1mg/ml

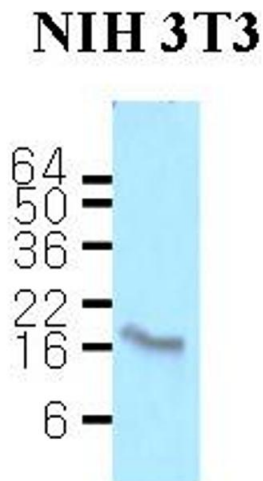
Buffer: In Phosphate-Buffered Saline (pH7.4) with 0.1% Sodium Azide

Preservative: Sodium azide

Precaution of Use: This product contains sodium azide: a POISONOUS AND HAZARDOUS SUBSTANCE which should be handled by trained staff only.

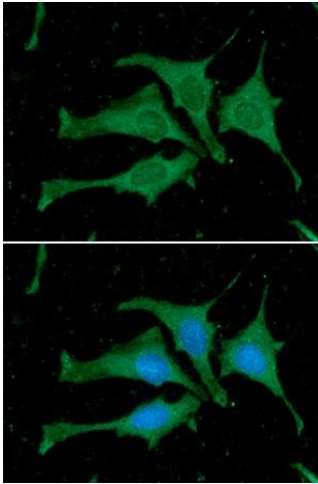
Storage: -20 °C

Images



Western Blotting

Image 1.



Immunofluorescence

Image 2. ICC/IF analysis of Calmodulin in HeLa cells. The cell was stained with ACA0830 (1:100). The secondary antibody (green) was used Alexa Fluor 488. DAPI was stained the cell nucleus (blue).