

Datasheet for ABIN306590

anti-SH3BP4 antibody[Go to Product page](#)**1** Image

Overview

Quantity:	250 µg
Target:	SH3BP4
Reactivity:	Human
Host:	Sheep
Clonality:	Polyclonal
Conjugate:	This SH3BP4 antibody is un-conjugated
Application:	Western Blotting (WB)

Product Details

Immunogen:	Full-length recombinant c-erbB-2/HER2/neu protein.
Isotype:	IgG
Cross-Reactivity:	Human
Characteristics:	Sheep anti-Membrane-associated guanylate cyclase of inverted orientation-3, Guanylate Kinase-WW domains,c-erbB-2 is a receptor tyrosine kinase. It exhibits extracellular domains with two cysteine-rich sequences, and a cytoplasmic tyrosine kinase domain flanked by large hydrophilic tails that carry several tyrosine autophosphorylation sites. Approximately 25 % of primary breast and ovarian tumors were found to overexpress the protein.
Purification:	Ammonium Sulfate Precipitation

Target Details

Target:	SH3BP4
---------	--------

Target Details

Alternative Name:	Membrane AssociatedGuanalyate Kinase GKWW domain (MAGI) (SH3BP4 Products)
UniProt:	P04626

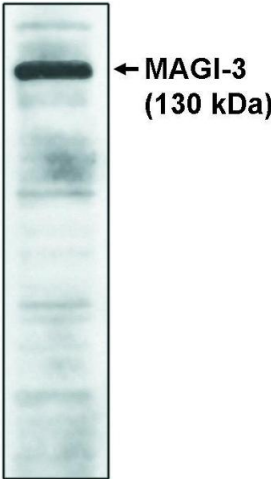
Application Details

Application Notes:	Antibody can be used for Western blotting (5-10 µg/mL). Optimal concentration should be evaluated by serial dilutions.
Restrictions:	For Research Use only

Handling

Buffer:	Provided as solution in phosphate buffered saline with 0.08 % sodium azide
Preservative:	Sodium azide
Precaution of Use:	This product contains Sodium azide: a POISONOUS AND HAZARDOUS SUBSTANCE which should be handled by trained staff only.
Storage:	-20 °C
Storage Comment:	Product should be stored at -20°C. Aliquot to avoid freeze/thaw cycles

Images



Western Blotting

Image 1. Western blot analysis using MAGI-3, GKWW antibody on cell lysates transfected with full-length human MAGI-3 protein.