

Datasheet for ABIN306671

**anti-EPH Receptor B1 antibody (C-Term)****1** Image[Go to Product page](#)

## Overview

Quantity:	250 µg
Target:	EPH Receptor B1 (EPHB1)
Binding Specificity:	C-Term
Reactivity:	Human
Host:	Sheep
Clonality:	Polyclonal
Conjugate:	This EPH Receptor B1 antibody is un-conjugated
Application:	Western Blotting (WB)

## Product Details

Immunogen:	C terminal portion of recombinant protein
Isotype:	IgG
Cross-Reactivity:	Human
Characteristics:	Eph B1 (ELK receptor) cytoplasmic, Tyrosine-protein kinase receptor EPH-2, Ephrin type B receptor 1, HEK6, Myeloid tumor related gene (MTGR1) is found deleted in acute myeloid leukemia. Overexpression of MTGR1 can stimulate AML1-MTG8 to induce GCSF- dependent proliferation of L-G cells and to interfere with AML1- dependent transcription. AML1/MTG8 functions as a complex with MTGR1 and that the complex might be important in promoting leukemogenesis.
Purification:	Ammonium Sulfate Precipitation

## Target Details

Target:	EPH Receptor B1 (EPHB1)
Alternative Name:	ELK rec tyr Kinase (Eph B1 Cy) ( <a href="#">EPHB1 Products</a> )
Pathways:	<a href="#">RTK Signaling</a>

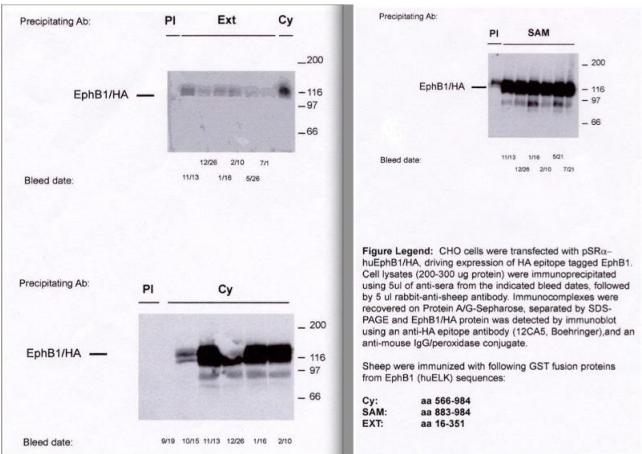
## Application Details

Application Notes:	Applications: Western Blot suggested dilution 1- 10 µg /mL
Restrictions:	For Research Use only

## Handling

Buffer:	Provided as solution in phosphate buffered saline with 0.08 % sodium azide
Preservative:	Sodium azide
Precaution of Use:	This product contains Sodium azide: a POISONOUS AND HAZARDOUS SUBSTANCE which should be handled by trained staff only.
Storage:	-20 °C
Storage Comment:	Product should be stored at -20°C. Aliquot to avoid freeze/thaw cycles

## Images



### Immunoprecipitation

**Image 1.** CHO cells were transfected with pSRα-huEphB1/HA, driving expression of HA epitope tagged EphB1. Cell lysates (200-300 µg protein) were immunoprecipitated using 5 µl rabbit-anti-sheep antibody. Immunocomplexes were recovered on Protein A/G-Sepharose, separated by SDS-PAGE and EphB1/HA protein was detected by immunoblot using an anti-HA epitope antibody