

Datasheet for ABIN306728  
**anti-ARHGEF2 antibody**



[Go to Product page](#)

1 Image

## Overview

Quantity:	250 µg
Target:	ARHGEF2
Reactivity:	Mouse
Host:	Sheep
Clonality:	Polyclonal
Conjugate:	This ARHGEF2 antibody is un-conjugated
Application:	Western Blotting (WB), Immunoprecipitation (IP), Immunofluorescence (IF)

## Product Details

Immunogen:	Antibody developed using protein corresponding to amino acids 2 to 447 of the Lfc protein fused to GST.
Isotype:	IgG
Cross-Reactivity:	Mouse
Characteristics:	Rho guanine nucleotide exchange factor 2, ARHGEF2,Lfc is a 118 kDa protein discovered in a screen for oncogenes in NIH 3T3 cells. Lfc is a signaling protein related to Lbc and is part of the Dbl family of proteins. Lfc is a guanine-nucleotide exchange factor (GEF) for the Rho family of small GTPases. Lfc has also been shown to be upstream of the serine-threonine kinase JNK. Lfc has also been shown to mediate the activation of the Rac signaling pathway.
Purification:	Ammonium Sulfate Precipitation

## Target Details

Target:	ARHGEF2
Alternative Name:	LFC ( <a href="#">ARHGEF2 Products</a> )
Pathways:	<a href="#">Negative Regulation of intrinsic apoptotic Signaling</a>

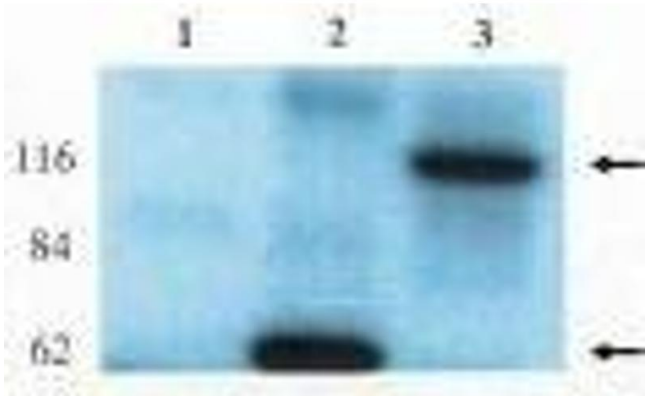
## Application Details

Application Notes:	Detects Lfc in mouse tissues by immunoprecipitation-Western blot at 4 µg/mL. Detects a 118 kDa band in mouse tissue extracts corresponding to wild-type Lfc. Can also be used in immunofluorescence assays. Optimal concentration should be evaluated by serial dilutions.
Restrictions:	For Research Use only

## Handling

Buffer:	Provided as solution in phosphate buffered saline with 0.08 % sodium azide
Preservative:	Sodium azide
Precaution of Use:	This product contains Sodium azide: a POISONOUS AND HAZARDOUS SUBSTANCE which should be handled by trained staff only.
Storage:	-20 °C
Storage Comment:	Product should be stored at -20°C. Aliquot to avoid freeze/thaw cycles

## Images



### Western Blotting

**Image 1.** Western blot analysis using anti-Lfc antibody on HEK-293 cell transfected with vector alone (1), lfc-short (2) and lfc-long (3).