

Datasheet for ABIN306786

anti-BUB1B antibody (AA 883-1052)[Go to Product page](#)**1** Image

Overview

Quantity:	250 µg
Target:	BUB1B
Binding Specificity:	AA 883-1052
Reactivity:	Mouse
Host:	Sheep
Clonality:	Polyclonal
Conjugate:	This BUB1B antibody is un-conjugated
Application:	Western Blotting (WB), Immunohistochemistry (IHC)

Product Details

Immunogen:	Recombinant protein corresponding to amino acids 883-1052 of the mouse Bub1b protein.
Isotype:	IgG
Cross-Reactivity:	Mouse
Characteristics:	Mitotic checkpoint kinase MAD3L,Bub1, a mitotic checkpoint gene first identified in yeast, ensures proper chromosome segregation by delaying anaphase until chromosomes are properly aligned on the mitotic spindle. Mutations in the mitotic spindle assembly checkpoint genes, like yeast Bub1, cause cells to exit mitosis without proper chromosome attachment/alignment, resulting in aneuploidy. Aneuploidy is a form of genetic instability involved in cancer. Recently, a novel homologue of the murine Bub1 gene has been identified and named Bub1b. The yeast mitotic checkpoint pathway is unresolved, but the mammalian pathway remains even less clear. It is important to investigate the role of the Bub1 genes in the

Product Details

mammalian checkpoint as they have been implicated in carcinogenesis, namely colon carcinomas. The aneuploidy and chromosome instability characterizing some tumors is thought to be caused by mutations in Bub1.

Purification: Ammonium Sulfate Precipitation

Target Details

Target: BUB1B

Alternative Name: Bub1 beta ([BUB1B Products](#))

UniProt: [Q9Z1S0](#)

Application Details

Application Notes: Antibody detects Bub1b in mitotic cells separated from NIH/3T3 cells by IP/Western blot (1-10 µg/mL) analysis. Detects a 130 kDa band. Optimal concentration should be evaluated by serial dilutions.

Restrictions: For Research Use only

Handling

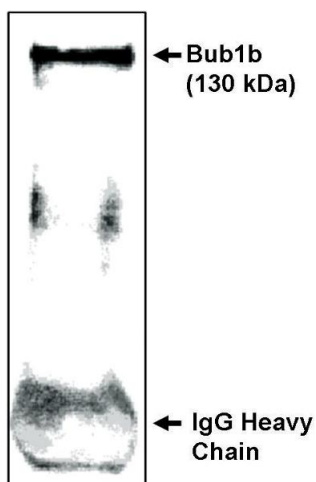
Buffer: Provided as solution in phosphate buffered saline with 0.08 % sodium azide

Preservative: Sodium azide

Precaution of Use: This product contains Sodium azide: a POISONOUS AND HAZARDOUS SUBSTANCE which should be handled by trained staff only.

Storage: -20 °C

Storage Comment: Product should be stored at -20°C. Aliquot to avoid freeze/thaw cycles



Western Blotting

Image 1. Immunoprecipitation/ Western blot analysis using Bub1b-CT antibody on NIH/3T3 cells synchronized to obtain mostly mitotic cells as determined by flow cytometry.