

Datasheet for ABIN306798
anti-VSX2 antibody (C-Term)



[Go to Product page](#)

1 Image

Overview

Quantity:	250 µg
Target:	VSX2
Binding Specificity:	C-Term
Reactivity:	Human
Host:	Sheep
Clonality:	Polyclonal
Conjugate:	This VSX2 antibody is un-conjugated
Application:	Western Blotting (WB), Immunohistochemistry (Frozen Sections) (IHC (fro))

Product Details

Isotype:	IgG
Cross-Reactivity:	Chicken, Human, Mouse, Rat
Characteristics:	Ceh-10 homeodomain-containing homolog, Chx10 is a 46 kDa homeodomain protein of the paired-like class that is essential for development of the mammalian eye. Mutations in Chx10 cause microphthalmia, a cause of congenital blindness in humans, and the ocular retardation (or) phenotype in mice. In the developing mouse retina Chx10 is expressed in retinal progenitors, while in the mature retina, Chx10 expression becomes restricted to bipolar neurons. Concurrent with these expression patterns, the Chx10 ^{-/-} (or) retina is thin due to a defect in proliferation of retinal progenitors, and lacks bipolar neurons. Chx10 is also expressed in the developing brainstem, thalamus, and spinal cord.
Purification:	Ammonium Sulfate Precipitation

Target Details

Target:	VSX2
Alternative Name:	chx 10 (CT) (VSX2 Products)
UniProt:	P58304
Pathways:	Dopaminergic Neurogenesis

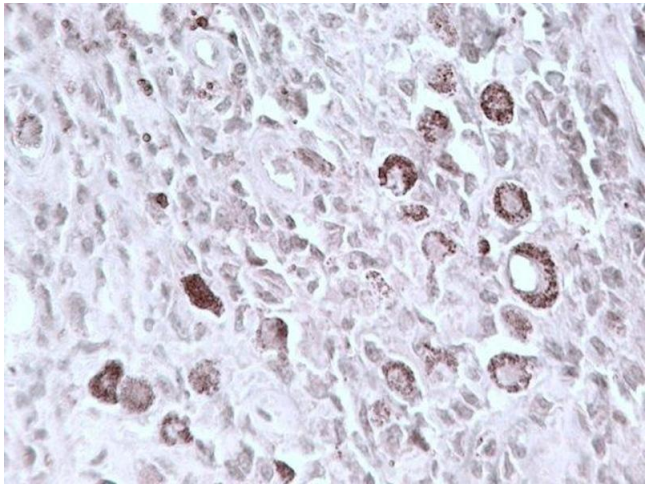
Application Details

Application Notes:	Detects Chx10 by Western blot at 0.5 to 1 µg/mL. Detects a 46 kDa band in mouse and rat retinal tissue lysates. Optimal concentration should be evaluated by serial dilutions. Suitable for use against recombinant proteins conjugated to OVA, GST, His tags and other.
Restrictions:	For Research Use only

Handling

Buffer:	Provided as solution in phosphate buffered saline with 0.08 % sodium azide,Antibody raised against a recombinant protein corresponding to amino acids 264 to 361 derived from the C-terminal region of the human Chx10 protein conjugated to KLH.
Preservative:	Sodium azide
Precaution of Use:	This product contains Sodium azide: a POISONOUS AND HAZARDOUS SUBSTANCE which should be handled by trained staff only.
Storage:	-20 °C
Storage Comment:	Product should be stored at -20°C. Aliquot to avoid freeze/thaw cycles

Images



Immunoprecipitation

Image 1. Ammonium Sulfate Precipitation