

## Datasheet for ABIN306804 **anti-RIT1 antibody**



[Go to Product page](#)

### 1 Image

#### Overview

Quantity:	100 µg
Target:	RIT1
Reactivity:	Human
Host:	Mouse
Clonality:	Monoclonal
Conjugate:	This RIT1 antibody is un-conjugated
Application:	Western Blotting (WB)

#### Product Details

Immunogen:	Hybridoma produced by the fusion of splenocytes from mice immunized with recombinant full-length human Rit protein and mouse myeloma cells.
Clone:	14G7
Isotype:	IgG1
Cross-Reactivity:	Human, Mouse
Characteristics:	Rit and its neuron-specific homologue, Rin, define a recently discovered subfamily of Ras-related GTPases. Rit and Rin are membrane-associated in spite of the fact that they lack a CAAX box or similar C-terminal lipidation motif. Rit and Rin display 64 % amino acid sequence identity and share a unique nine amino acid effector domain (DPTIEDAYK) that is 100 % conserved between the murine and human proteins. Although the effector domain sequences of Rit and Rin are very similar to that of Ras, Rit and Rin have been shown to interact with the known Ras-binding proteins RaIGDS, Rlf and AF-6, but not the Raf kinases, RIN1 or the p110

## Product Details

---

subunit of PI3 kinase. For this reason, it has been suggested that Rit and Rin may play important roles in the regulation of signaling pathways distinct from those controlled by Ras.

Purification: Protein A or G purified

## Target Details

---

Target: RIT1

Alternative Name: Rit ([RIT1 Products](#))

UniProt: [Q92963](#)

Pathways: [Neurotrophin Signaling Pathway](#)

## Application Details

---

Application Notes: Antibody detects recombinant Rit protein expressed in 293 cells by Western blot analysis at a concentration of 0.5 to 1 µg/mL. Detects a band of approximately 25 kDa (predicted molecular weight: 26 kDa). Does not cross-react with Rin protein. Optimal concentration should be evaluated by serial dilutions.

Restrictions: For Research Use only

## Handling

---

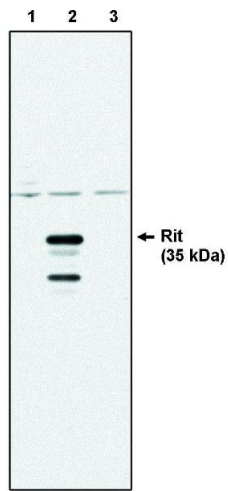
Buffer: Provided as sterile filtered solution containing 20 mM sodium phosphate, 150 mM sodium chloride, 50 % glycerol at pH 7.5 and 3 mM sodium azide

Preservative: Sodium azide

Precaution of Use: This product contains Sodium azide: a POISONOUS AND HAZARDOUS SUBSTANCE which should be handled by trained staff only.

Storage: -20 °C

Storage Comment: Product should be stored at -20°C. Aliquot to avoid freeze/thaw cycles



### Western Blotting

**Image 1.** Western blot analysis using Rit antibody .