

Datasheet for ABIN306848  
**anti-MYOD1 antibody**



[Go to Product page](#)

1 Image

## Overview

Quantity:	100 µg
Target:	MYOD1
Reactivity:	Human
Host:	Mouse
Clonality:	Monoclonal
Conjugate:	This MYOD1 antibody is un-conjugated
Application:	Western Blotting (WB), ELISA, Immunofluorescence (IF), Immunohistochemistry (Paraffin-embedded Sections) (IHC (p)), Immunoprecipitation (IP), Immunohistochemistry (Frozen Sections) (IHC (fro))

## Product Details

Immunogen:	Recombinant mouse MyoD1 protein.,Hybridoma produced by the fusion of splenocytes from BALB/c mice immunized with recombinant mouse MyoD1 protein and mouse myeloma Sp2/0-Ag14 cells.
Clone:	5-2F
Isotype:	IgG2a
Cross-Reactivity:	Chicken, Human, Mouse, Pig, Rat
Characteristics:	Myoblast determination protein 1, Myogenic factor 3, MyoD1, Myf-3,X1414M monoclonal antibody, clone 5.2F recognizes a protein of 45 kDa, identified as MyoD1. The epitope of this antibody maps in between amino acid 3-56 in the N-terminus of mouse MyoD1 protein. It does not cross react with myogenin, Myf5, or Myf6. Occassionally nuclear expression/staining of

## Product Details

MyoD1 is seen in ectomesenchymoma and a subset of Wilms tumors. Weak cytoplasmic staining/presence is observed in several non-muscle tissues, including glandular epithelium and also in rhabdomyosarcomas, neuroblastomas, Ewings sarcomas and alveolar soft part sarcomas. The 5.2F antibody to MyoD1 labels the nuclei of myoblasts in developing muscle tissues. MyoD1 is not detected in normal adult tissue.

Purification: Protein A/G Chromatography

## Target Details

Target: MYOD1

Alternative Name: MyoD1 ([MYOD1 Products](#))

Pathways: [Regulation of Muscle Cell Differentiation, Skeletal Muscle Fiber Development](#)

## Application Details

Application Notes: This antibody can be used for electron microscopy, ELISA, immunofluorescence, immunoprecipitation (2 µg/mg of protein lysate), Western blotting (1 µg/mL) and immunohistochemistry on frozen and formalin/paraffin fixed tissues (2-4 µg/mL). These working concentrations are merely an indication. Optimal working concentrations should, however, be evaluated by serial dilutions by the customer.

Restrictions: For Research Use only

## Handling

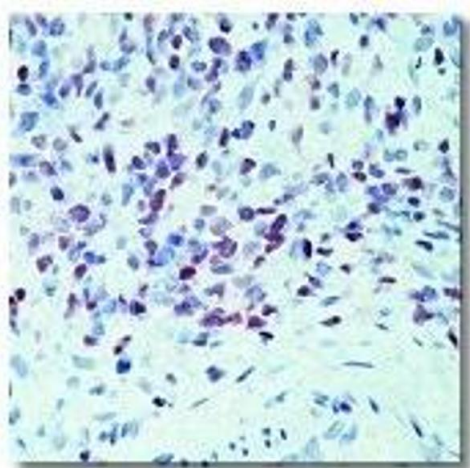
Buffer: Purified monoclonal antibody 5.2F in phosphate buffered saline with 0.08 % sodium azide

Preservative: Sodium azide

Precaution of Use: This product contains Sodium azide: a POISONOUS AND HAZARDOUS SUBSTANCE which should be handled by trained staff only.

Storage: -20 °C

Storage Comment: Product should be stored at -20°C. Aliquot to avoid freeze/thaw cycles



#### Western Blotting

**Image 1.** Left: Immunohistochemical staining using MyoD1 antibody on formalin fixed, paraffin embedded human rhabdomyosarcoma. Right: Western blot using 60 ng of purified MyoD1 protein with MyoD1 antibody at 2 µg/ml and detected using goat anti-mouse HRP and visualized with Pierce West-Femto substrate., Chicken