

Datasheet for ABIN306860

anti-ACVR1 antibody (Extracellular Domain)



[Go to Product page](#)

1 Image

Overview

Quantity:	250 µg
Target:	ACVR1 (ACRV1)
Binding Specificity:	Extracellular Domain
Reactivity:	Chicken
Host:	Sheep
Clonality:	Polyclonal
Conjugate:	This ACVR1 antibody is un-conjugated
Application:	Western Blotting (WB)

Product Details

Immunogen:	Recombinant protein derived from the extracellular domain of the chicken ALK2 protein. Protein shares significant homology with the mouse, rat and human sequences.
Isotype:	IgG
Cross-Reactivity:	Chicken
Characteristics:	Activin Receptor-Like Kinase 2, Activin Receptor-Like Kinase 2 is a member of the superfamily of type I receptors for transforming growth factor- (TGF-). This receptor binds both activin and bone morphogenic proteins (BMPs). In mice, these receptors are expressed mainly in the extraembryonic visceral endoderm before gastrulation and later in both embryonic and extraembryonic cells during gastrulation. Also, it has been shown that ALK2 associates with and phosphorylates Smad1 and also regulated Smad5 and Smad8 phosphorylation. Additionally, it induces the Tlx2 promoter in the absence of BMP7.

Product Details

Purification: Ammonium Sulfate Precipitation

Target Details

Target: ACVR1 (ACRV1)

Alternative Name: Alk2 ([ACRV1 Products](#))

UniProt: [Q90ZK6](#)

Application Details

Application Notes: Antibody can be used for Western blotting (5-10 µg/mL), immunoprecipitation (5 µg/mg of protein lysate and immunohistochemistry on paraffin embedded tissue sections (5-10 µg/mL). Optimal concentration should be evaluated by serial dilutions.

Restrictions: For Research Use only

Handling

Buffer: Provided as solution in phosphate buffered saline with 0.08 % sodium azide

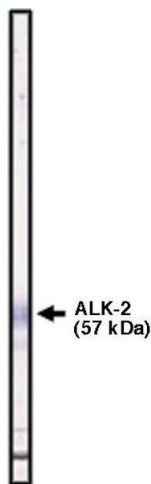
Preservative: Sodium azide

Precaution of Use: This product contains Sodium azide: a POISONOUS AND HAZARDOUS SUBSTANCE which should be handled by trained staff only.

Storage: -20 °C

Storage Comment: Product should be stored at -20°C. Aliquot to avoid freeze/thaw cycles

Images



Western Blotting

Image 1. Western blot using ALK-2 antibody on ALK-2 fusion protein. Chicken