

Datasheet for ABIN306862  
**anti-SMC2 antibody (AA 523-768)**



[Go to Product page](#)

1 Image

## Overview

Quantity:	100 µg
Target:	SMC2
Binding Specificity:	AA 523-768
Reactivity:	Human
Host:	Mouse
Clonality:	Monoclonal
Conjugate:	This SMC2 antibody is un-conjugated
Application:	Western Blotting (WB)

## Product Details

Immunogen:	Hybridoma produced by the fusion of splenocytes from mice immunized with recombinant protein corresponding to amino acids 523-768 of human CAP-E and mouse myeloma cells.
Clone:	E1M
Isotype:	IgG
Cross-Reactivity:	Human
Characteristics:	CAP-E, Structural maintenance of chromosomes protein 2, SMC-2, CAP-E and CAP-C (Chromosome Associated Protein-E & C) are also SMC (Structural Maintenance of Chromosome) family members that form a heterodimeric complex required for mitotic chromosome condensation to achieve proper segregation of genetic information during subsequent cell division. hCAP-C/hCAP-E is a component of a multiprotein complex called condensin that interacts with phosphorylation of Histone H3 resulting in the mitotic

## Product Details

---

chromosome condensation. The distribution patterns of the two heterodimeric complexes in interphase nucleus indicate independent behaviour of the two complexes during cell cycle. These results suggest that the two distinct complexes are involved in different aspects of mitotic chromosome organization in human cells.

---

Purification: Protein A/G Chromatography

## Target Details

---

Target: SMC2

Alternative Name: Chromosome Associated Protein-E ([SMC2 Products](#))

UniProt: [O95347](#)

## Application Details

---

Application Notes: This antibody can be used for Western blotting (1-5 µg/mL). Optimal concentration should be evaluated by serial dilutions.

Restrictions: For Research Use only

## Handling

---

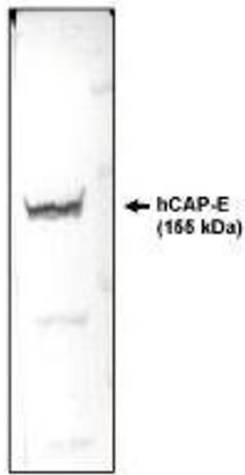
Buffer: Provided as solution in phosphate buffered saline with 0.08 % sodium azide

Preservative: Sodium azide

Precaution of Use: This product contains Sodium azide: a POISONOUS AND HAZARDOUS SUBSTANCE which should be handled by trained staff only.

Storage: -20 °C

Storage Comment: Product should be stored at -20°C. Aliquot to avoid freeze/thaw cycles



### Western Blotting

**Image 1.** Western blotting using CAP-E antibody on HeLa cell lysate.