



[Go to Product page](#)

Datasheet for ABIN3068683

## anti-CTAG1B antibody

### 3 Images

#### Overview

Quantity:	100 µL
Target:	CTAG1B
Reactivity:	Human, Rat
Host:	Rabbit
Clonality:	Polyclonal
Conjugate:	This CTAG1B antibody is un-conjugated
Application:	Western Blotting (WB), Immunohistochemistry (IHC)

#### Product Details

Isotype:	IgG
Purification:	Affinity purified

#### Target Details

Target:	CTAG1B
Alternative Name:	CTAG1B ( <a href="#">CTAG1B Products</a> )
Molecular Weight:	Calculated MW: 16 kDa/17 kDa Observed MW: 18 kDa
Gene ID:	1485
UniProt:	<a href="#">P78358</a>

## Application Details

---

Application Notes: Optimal working dilution should be determined by the investigator.

Restrictions: For Research Use only

## Handling

---

Format: Liquid

Concentration: Lot specific

Buffer: PBS, pH 7.3, 0.02 % sodium azide, 50 % glycerol.

Preservative: Sodium azide

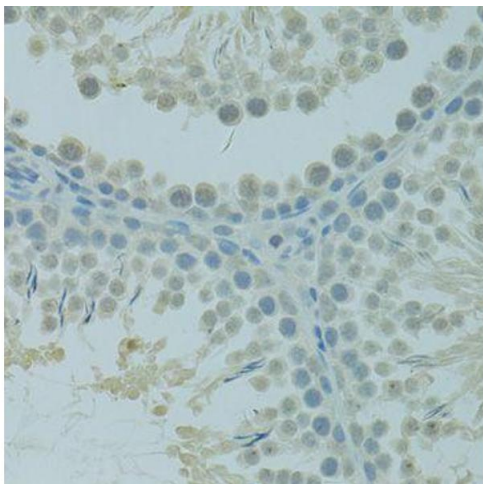
Precaution of Use: This product contains Sodium azide: a POISONOUS AND HAZARDOUS SUBSTANCE which should be handled by trained staff only.

Storage: -20 °C

Storage Comment: Aliquot and store at -20 °C. Avoid repeated freeze/thaw cycles.

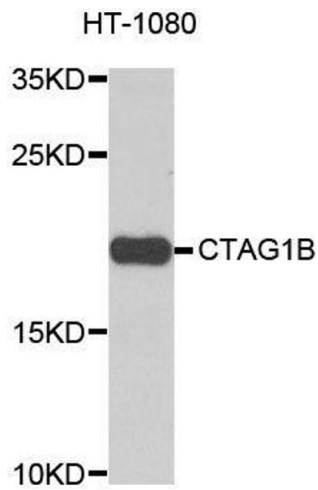
## Images

---



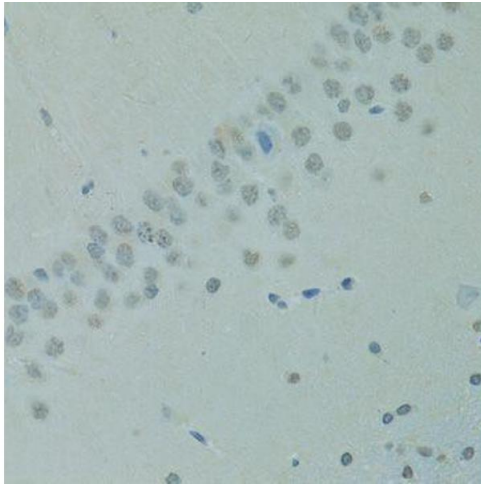
### Immunohistochemistry (Paraffin-embedded Sections)

**Image 1.** Immunohistochemistry of paraffin-embedded rat testis using CTAG1B antibody (ABIN6003542) at dilution of 1/100 (40x lens).



### Western Blotting

**Image 2.** Western blot analysis of extracts of HT-1080 cells, using CTAG1B antibody (ABIN6003542) at 1/1000 dilution.



### Immunohistochemistry (Paraffin-embedded Sections)

**Image 3.** Immunohistochemistry of paraffin-embedded rat brain using CTAG1B antibody (ABIN6003542) at dilution of 1/100 (40x lens).