

Datasheet for ABIN306869

anti-Kv1.1 Potassium Channel antibody[Go to Product page](#)**1** Image

Overview

Quantity:	100 µg
Target:	Kv1.1 Potassium Channel
Reactivity:	Rat
Host:	Rabbit
Clonality:	Polyclonal
Application:	Western Blotting (WB)

Product Details

Immunogen:	Synthetic peptide derived from the rat Kv1.1 potassium channel conjugated to KLH
Isotype:	IgG
Cross-Reactivity:	Human, Mouse, Rat
Characteristics:	<p>Voltage-Gated Potassium Channel, Kv1.1 isoform, K⁺ channels from the Kv1 subfamily contain four alpha-subunits and the combinations (from Kv1.1-1.6) determine susceptibility to dendrotoxin (DTX) homologue. Kv1.1, a Shaker-like voltage-gated potassium channel, is strongly expressed in a variety of neurons in adult rodents, in which it appears to be involved in regulating neuronal excitability. Here we show that Kv1.1 is also expressed during embryonic development in the mouse, exhibiting two transient peaks of expression around embryonic day 9.5 (E9.5) and E14.5. Potassium channels play a critical role in limiting neuronal excitability. Mutations in certain voltage-gated potassium channels have been associated with hyperexcitable phenotypes in both humans and animals. However, only recently have mutations in potassium channel genes (i.e. KCNQ2 and KCNQ3) been discovered in a human epilepsy, benign familial neonatal convulsions.</p>

Product Details

Purification: Ammonium Sulfate Precipitation

Target Details

Target: Kv1.1 Potassium Channel

Abstract: [Kv1.1 Potassium Channel Products](#)

Application Details

Application Notes: This antibody can be used for Western blotting (5-10 µg/mL). Optimal concentration should be evaluated by serial dilutions.

Restrictions: For Research Use only

Handling

Buffer: Provided as solution in phosphate buffered saline with 0.08 % sodium azide

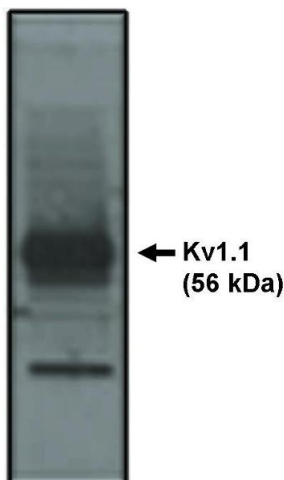
Preservative: Sodium azide

Precaution of Use: This product contains Sodium azide: a POISONOUS AND HAZARDOUS SUBSTANCE which should be handled by trained staff only.

Storage: -20 °C

Storage Comment: Product should be stored at -20°C. Aliquot to avoid freeze/thaw cycles

Images



Western Blotting

Image 1. Western blot analysis using Kv1.1 antibody on rat brain lysate.