



Datasheet for ABIN3068853
anti-HIST1H2AG antibody



[Go to Product page](#)

7 Images

Overview

Quantity:	100 µL
Target:	HIST1H2AG
Reactivity:	Human, Mouse, Rat
Host:	Rabbit
Clonality:	Polyclonal
Application:	Western Blotting (WB), Immunohistochemistry (IHC)

Product Details

Isotype:	IgG
Purification:	Affinity purified

Target Details

Target:	HIST1H2AG
Alternative Name:	HIST1H2AG (HIST1H2AG Products)
Molecular Weight:	Calculated MW: 14 kDa Observed MW: 14 kDa
Gene ID:	8329
UniProt:	P0C0S8

Application Details

Application Notes: Optimal working dilution should be determined by the investigator.

Restrictions: For Research Use only

Handling

Format: Liquid

Concentration: Lot specific

Buffer: PBS, pH 7.3, 0.02 % sodium azide, 50 % glycerol.

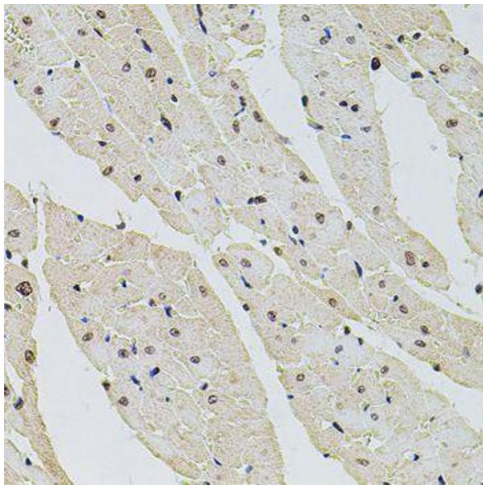
Preservative: Sodium azide

Precaution of Use: This product contains Sodium azide: a POISONOUS AND HAZARDOUS SUBSTANCE which should be handled by trained staff only.

Storage: -20 °C

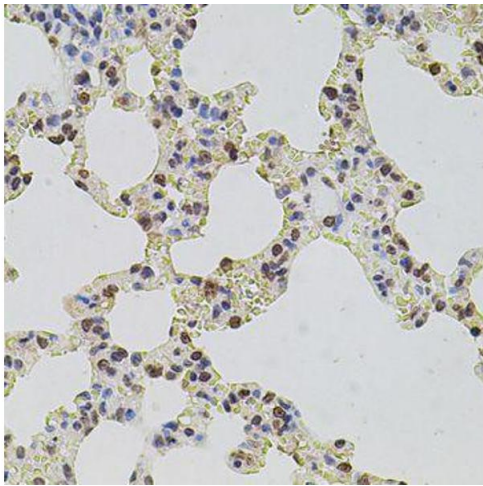
Storage Comment: Aliquot and store at -20 °C. Avoid repeated freeze/thaw cycles.

Images



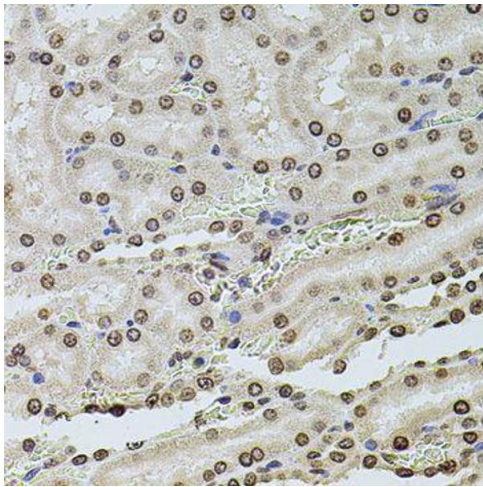
Immunohistochemistry (Paraffin-embedded Sections)

Image 1. Immunohistochemistry of paraffin-embedded rat heart using HIST1H2AG antibody (ABIN6003627) at dilution of 1/100 (40x lens).



Immunohistochemistry (Paraffin-embedded Sections)

Image 2. Immunohistochemistry of paraffin-embedded rat lung using HIST1H2AG antibody (ABIN6003627) at dilution of 1/100 (40x lens).



Immunohistochemistry (Paraffin-embedded Sections)

Image 3. Immunohistochemistry of paraffin-embedded rat kidney using HIST1H2AG antibody (ABIN6003627) at dilution of 1/100 (40x lens).

Please check the [product details page](#) for more images. Overall 7 images are available for ABIN3068853.