

Datasheet for ABIN306895 **anti-S1PR4 antibody (C-Term)**



[Go to Product page](#)

1 Image

Overview

| | |
|----------------------|--------------------------------------|
| Quantity: | 100 µg |
| Target: | S1PR4 |
| Binding Specificity: | C-Term |
| Reactivity: | Human |
| Host: | Mouse |
| Clonality: | Monoclonal |
| Conjugate: | This S1PR4 antibody is un-conjugated |
| Application: | Western Blotting (WB) |

Product Details

| | |
|----------|------|
| Clone: | 1 |
| Isotype: | IgG1 |

Target Details

| | |
|-------------------|--|
| Target: | S1PR4 |
| Alternative Name: | Sphingosine 1 Phosphate 4 Receptor (CT) (EDG6) (S1PR4 Products) |
| Background: | EDG6 (S1P4) belongs to a family of G-protein coupled receptors whose ligands are lysophospholipids. The ligand for EDG6 (S1P4) is sphingosine-1-phosphate. There are 8 known members of the EDG receptor family and they are implicated in mediating growth related effects such as induction of cellular proliferation, alterations in differentiation and survival and suppression of apoptosis. They also evoke cellular effector functions that are dependent on |

Target Details

cytoskeletal responses such as contraction, secretion, adhesion and chemotaxis. EDG receptors are developmentally regulated and differ in tissue distribution. They couple to multiple types of G proteins to signal through ras and MAP kinase, rho, phospholipase C and several protein tyrosine kinases. EDG6 (S1P4) is expressed in lymphoid and hematopoietic tissue and in the lungs. Recently, the designation of the EDG receptors has been modified to include the ligand for the receptor. Thus, the new designation for the EDG6 (S1P4) receptor is the sphingosine 1-phosphate receptor-4 (S1P4). Synonyms: Endothelial cell differentiation gene 6 C-terminal, Sphingosine-1-Phosphate Receptor-4 (S1P4), (S1P4) (Sphingosine 1-phosphate receptor Edg-6, S1P receptor Edg-6, Endothelial differentiation G-protein coupled receptor 6, S1PR4, EDG6.

Gene ID: 95977

Application Details

Application Notes: This antibody can be used for Western blotting (5-10 ug/ml) and Flow Cytometry. Positive Control: RH7777 cells transfected with EDG6 (S1P4) protein (Cat. No. X1311C).

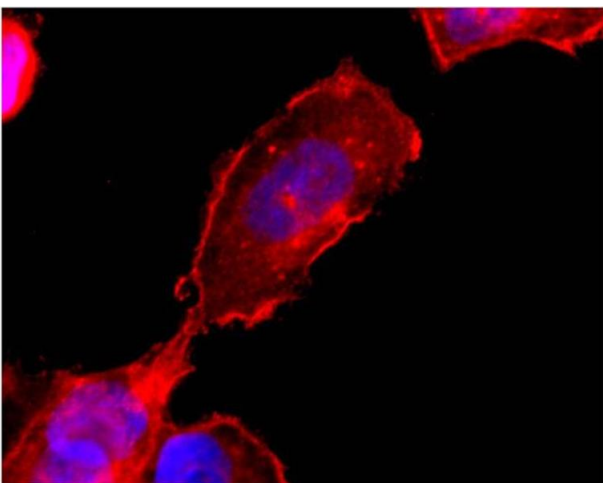
Restrictions: For Research Use only

Handling

Concentration: 1 mg/ml

Storage: -20 °C

Images



Western Blotting

Image 1. Western blot analysis using EDG6 (S1P4) monoclonal antibody (X1533M) on cell lysate transfected with EDG6 (S1P4) protein at 5 µg/ml. IF on transiently transfected CHO cells. Developed with Cy5 anti- mouse, nuclei are stained with DAPI.