

Datasheet for ABIN3068985
anti-RGS8 antibody



[Go to Product page](#)

1 Image

Overview

Quantity:	100 µL
Target:	RGS8
Reactivity:	Human, Mouse, Rat
Host:	Rabbit
Clonality:	Polyclonal
Conjugate:	This RGS8 antibody is un-conjugated
Application:	Western Blotting (WB)

Product Details

Isotype:	IgG
Purification:	Affinity purified

Target Details

Target:	RGS8
Alternative Name:	RGS8 (RGS8 Products)
Molecular Weight:	Calculated MW: 20 kDa/22 kDa Observed MW: 21 kDa
Gene ID:	85397
UniProt:	P57771
Pathways:	Regulation of G-Protein Coupled Receptor Protein Signaling

Application Details

Application Notes: Optimal working dilution should be determined by the investigator.

Restrictions: For Research Use only

Handling

Format: Liquid

Concentration: Lot specific

Buffer: PBS, pH 7.3, 0.02 % sodium azide, 50 % glycerol.

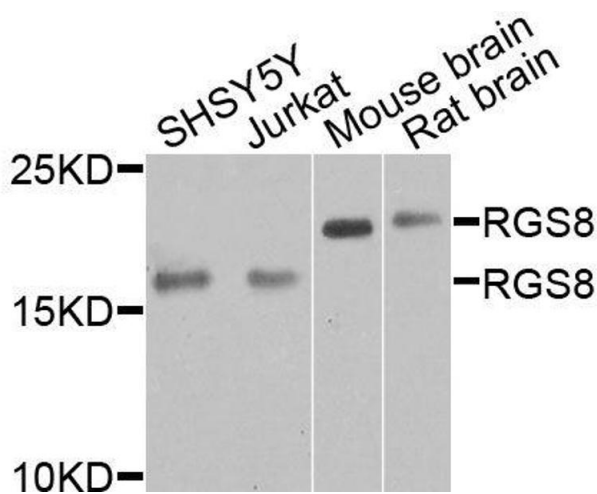
Preservative: Sodium azide

Precaution of Use: This product contains Sodium azide: a POISONOUS AND HAZARDOUS SUBSTANCE which should be handled by trained staff only.

Storage: -20 °C

Storage Comment: Aliquot and store at -20 °C. Avoid repeated freeze/thaw cycles.

Images



Western Blotting

Image 1. Western blot analysis of extracts of various cell lines, using RGS8 antibody (ABIN6003696) at 1/1000 dilution.