

Datasheet for ABIN3068986  
**anti-RGS8 antibody**



[Go to Product page](#)

1 Image

## Overview

Quantity:	200 µL
Target:	RGS8
Reactivity:	Human, Mouse, Rat
Host:	Rabbit
Clonality:	Polyclonal
Conjugate:	This RGS8 antibody is un-conjugated
Application:	Western Blotting (WB)

## Product Details

Isotype:	IgG
Purification:	Affinity purified

## Target Details

Target:	RGS8
Alternative Name:	<a href="#">RGS8 (RGS8 Products)</a>
Molecular Weight:	Calculated MW: 20 kDa/22 kDa Observed MW: 21 kDa
Gene ID:	85397
UniProt:	<a href="#">P57771</a>
Pathways:	<a href="#">Regulation of G-Protein Coupled Receptor Protein Signaling</a>

## Application Details

Application Notes: Optimal working dilution should be determined by the investigator.

Restrictions: For Research Use only

## Handling

Format: Liquid

Concentration: Lot specific

Buffer: PBS, pH 7.3, 0.02 % sodium azide, 50 % glycerol.

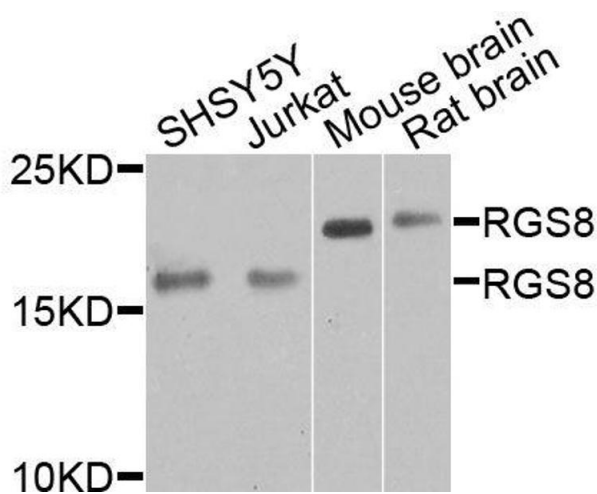
Preservative: Sodium azide

Precaution of Use: This product contains Sodium azide: a POISONOUS AND HAZARDOUS SUBSTANCE which should be handled by trained staff only.

Storage: -20 °C

Storage Comment: Aliquot and store at -20 °C. Avoid repeated freeze/thaw cycles.

## Images



### Western Blotting

**Image 1.** Western blot analysis of extracts of various cell lines, using RGS8 antibody (ABIN6003696) at 1/1000 dilution.